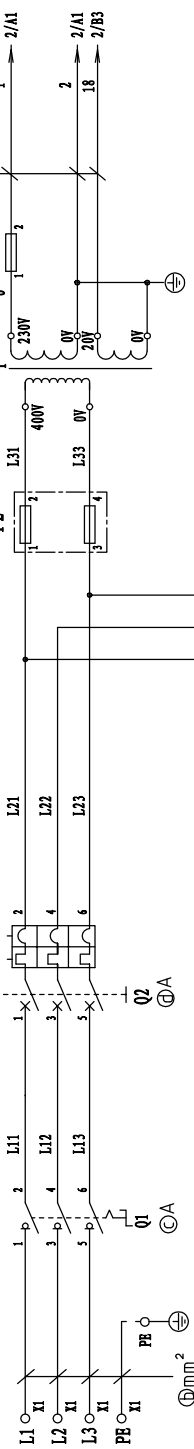
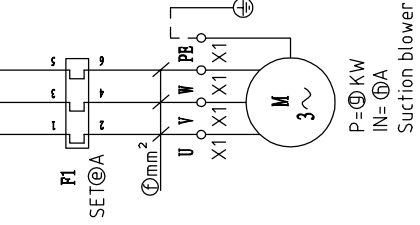


1 2 3 4 5 6 7 8

3/PE/4.00V 50Hz
IN=⊕A

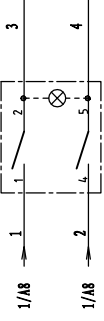


| Mode | Symbol | (a) | (b) | (c) | (d) | (e) | (f) | (g) | (h) |
|---------------|--------|------|-----|-----|-----|-----|-----|------|-----|
| SAL-1HP-UG122 | | 2.34 | 2.5 | 16 | 15 | 2.7 | 2.5 | 0.75 | 2.3 |

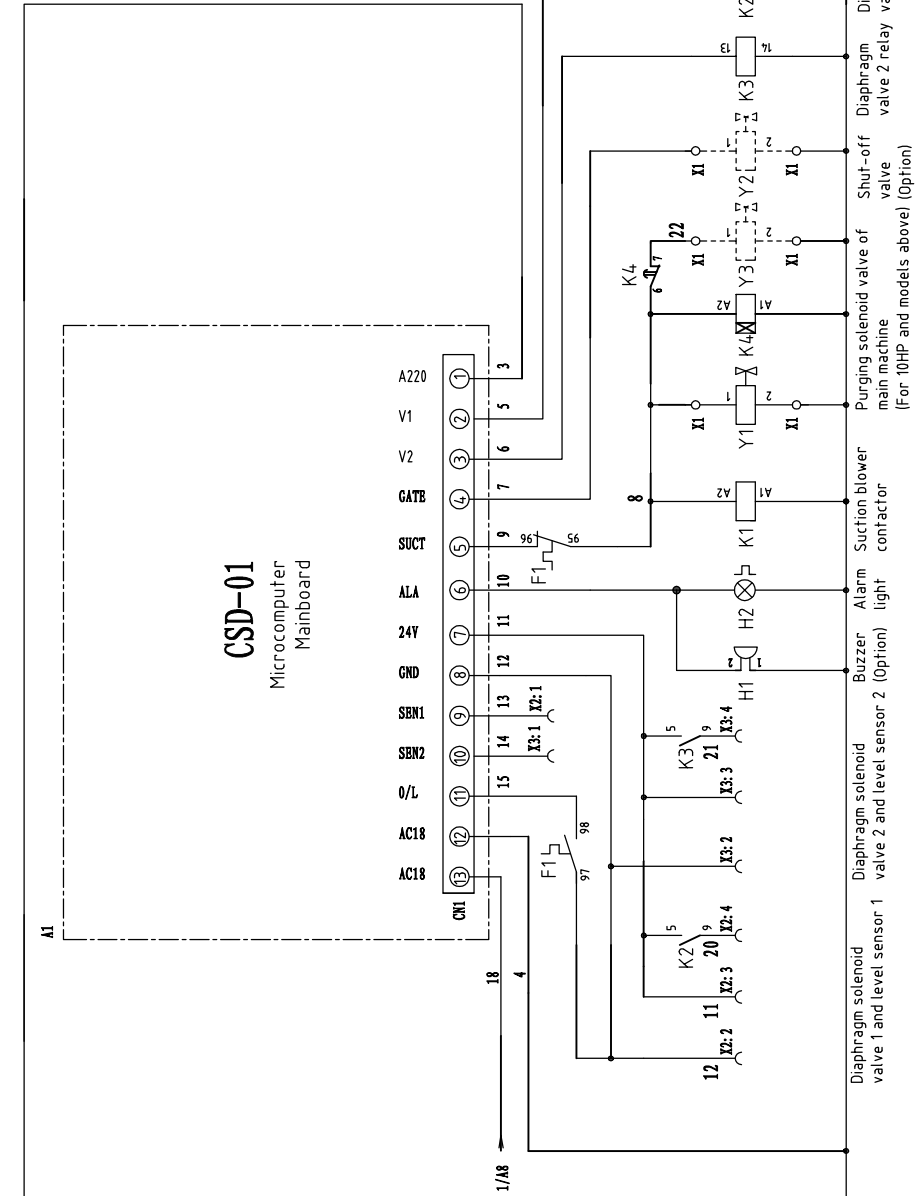


| Title | | Drawing No. | | Scale | | Page | |
|----------------------|--|-----------------------|--|-------------|--|--------|--|
| SAL-1HP-UG122 | | SAL-UG122-CB-400V-F-1 | | CE | | Page 1 | |
| Main Circuit Diagram | | | | Voltage | | 400V | |
| | | | | Frequency | | 50Hz | |
| Version | | Approved by | | Date | | | |
| Designer | | Proof/read by | | Checked by | | | |
| Before modification | | After modification | | Modify date | | | |
| Date | | 20130625 | | | | | |
| Total | | 4 | | 8 | | | |

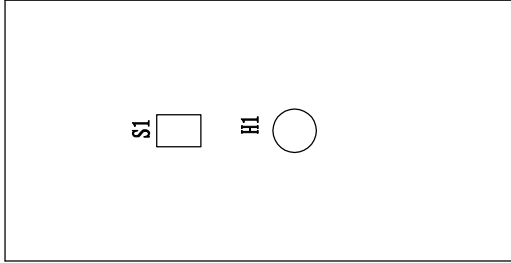
SHINI
信易電熱機械股份有限公司
Shini Plastics Technologies, Inc.



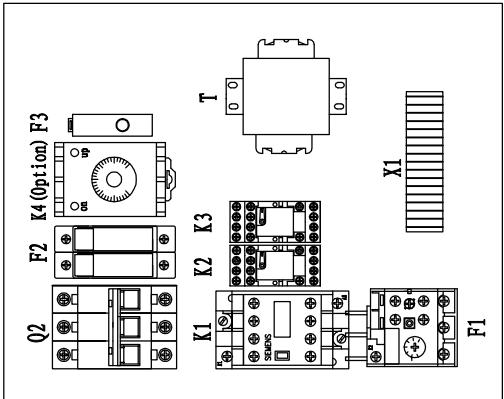
CSD-01 Microcomputer Mainboard



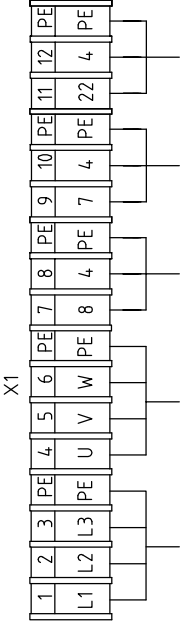
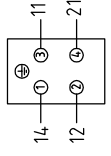
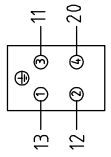
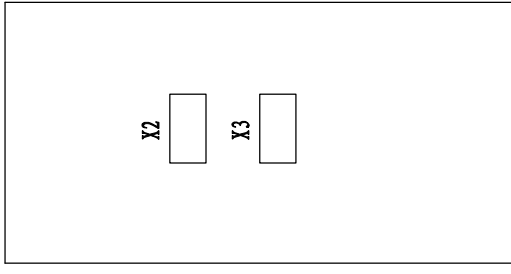
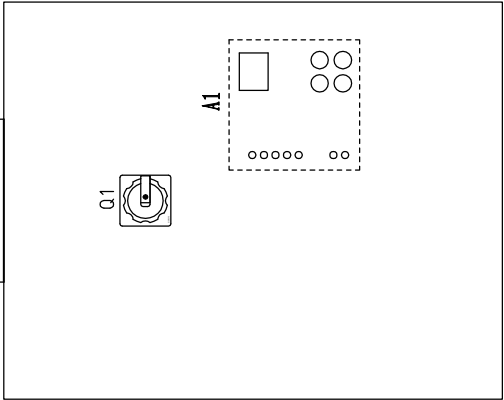
| | | | | | |
|--|---|-----------------------|----------|---------|------|
| Title | | Drawing No. | | Page | 2 |
| SAL-1HP-UG122 | | SAL-UG122-CE-400V-F-2 | | Totaly | 4 |
| Control Circuit Diagram | | Standard | CE | Totluse | 400V |
| SHINI 信易塑料机械股份有限公司 Shini Plastics Technologies, Inc. | | Frequency | 50HZ | | |
| Version | F | Date | 20130625 | | |
| Approved by | | Modify date | | | |
| Designer | | After modification | | | |
| Proofread by | | Before modification | | | |
| Checked by | | Mark | | | |



X2|Heavy lead joint for connecting hopper 1 and the main machine)



X3|Heavy lead joint for connecting hopper 2 and the main machine)



| Subscript | Function | Description |
|-----------|--------------------------|---|
| 1 | Material level signal | Connect to material level signal |
| 2 | GND | Connect to material level sensor and terminal of solenoid valve COM |
| 3 | 24VDC | Connect to material level sensor 24VDC |
| 4 | Diaphragm solenoid valve | Connect to solenoid valve signal 24VDC |

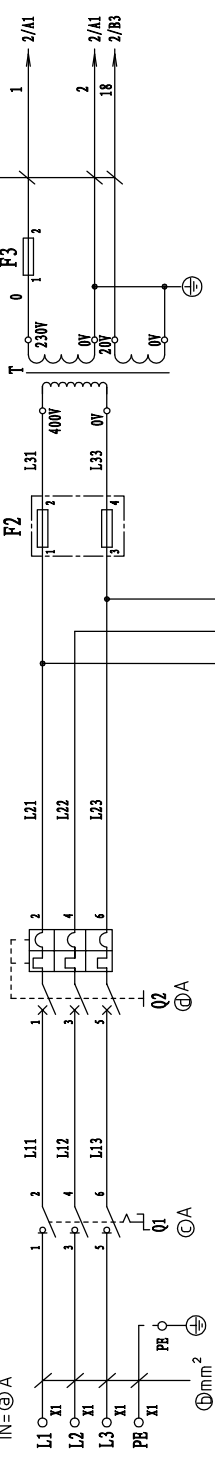
| Subscript | Function | Description |
|-----------|----------------------------|---|
| 1 | Material level signal | Connect to material level signal |
| 2 | GND | Connect to material level sensor and terminal of solenoid valve COM |
| 3 | 24VDC | Connect to material level sensor 24VDC |
| 4 | Diaphragm solenoid valve 2 | Connect to solenoid valve signal 24VDC |

Power in
Suction blower
Shut-off valve (Option)
Vacuum breaking valve (Only for 3HP UP)
Purging solenoid valve of main machine (For 10HP and models above)

| Title | | Drawing No. | |
|------------------------------|--------------------|---|------------|
| SAL-1HP-UG122 | | SAL-UG122-CE-400V-F-3 | |
| Electrical Components Layout | | Scale | Page 3 |
| Drawer | Designer | Standard | Totally CE |
| Proofread by | Checked by | Voltage | 4 Pages |
| Modify date | Modify by | Frequency | 400V |
| Mark | After modification | Frequency | 50Hz |
| 20130625 | | SHINI 信易塑料机械股份有限公司 Shini Plastics Technologies, Inc. | |
| Version | Approved by | 8 | |
| 4 | Date | 7 | |
| 3 | Date | 6 | |
| 1 | Date | 5 | |

1 2 3 4 5 6 7 8

3/PE/400V 50Hz
IN=⊕A

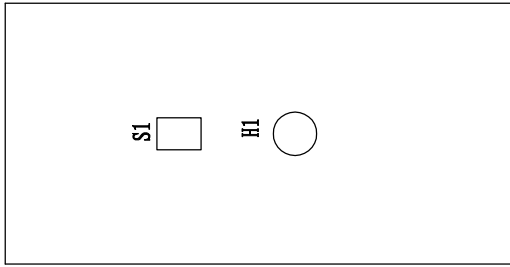


| Mode | Symbol | (a) | (b) | (c) | (d) | (e) | (f) | (g) | (h) |
|---------------|--------|-----|-----|-----|-----|-----|-----|-----|-----|
| SAL-2HP-UG122 | | 3.6 | 2.5 | 16 | 15 | 4.0 | 2.5 | 1.5 | 3.6 |

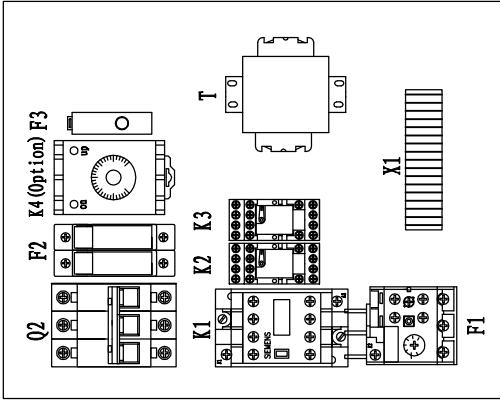
| Title | | Drawing No. | | Scale | | Page | |
|----------------------|--|-----------------------------------|--|-----------|--|-----------|--|
| SAL-2HP-UG122 | | SAL-UG122-CE-400V-F-1 | | CE | | Page 1 | |
| Main Circuit Diagram | | | | Voltage | | Totally 4 | |
| | | | | Frequency | | 400V | |
| | | | | | | 50Hz | |
| SHINI | | 信易塑料機械股份有限公司 | | | | | |
| | | Shini Plastics Technologies, Inc. | | | | | |
| Version | | Date | | | | | |
| Approved by | | 20130625 | | | | | |
| Designer | | Modify date | | | | | |
| Proof/read by | | | | | | | |
| Checked by | | | | | | | |
| After modification | | | | | | | |
| Before modification | | | | | | | |
| Maxt | | | | | | | |

1 2 3 4 5 6 7 8

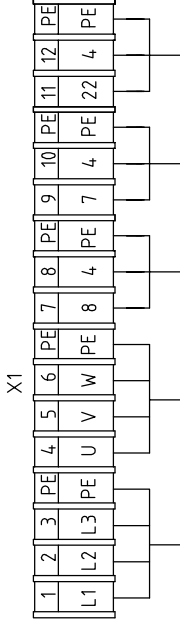
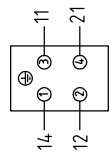
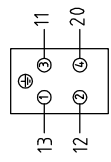
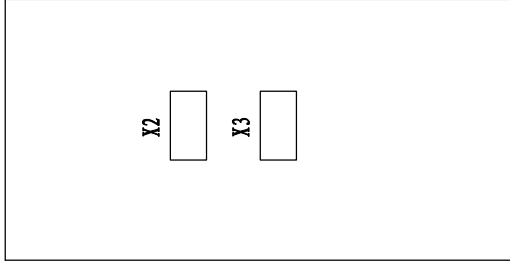
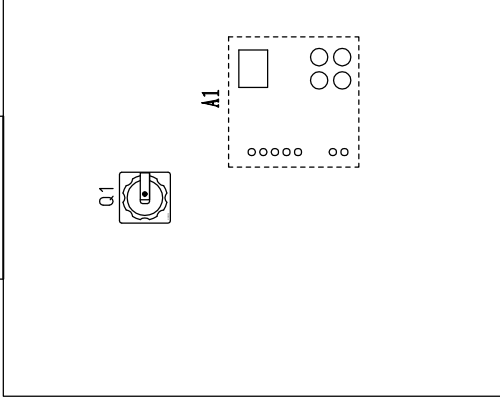
1 2 3 4 5 6 7 8



X2(Heavy load point for connecting hopper 1 and the main machine)



X3(Heavy load point for connecting hopper 2 and the main machine)



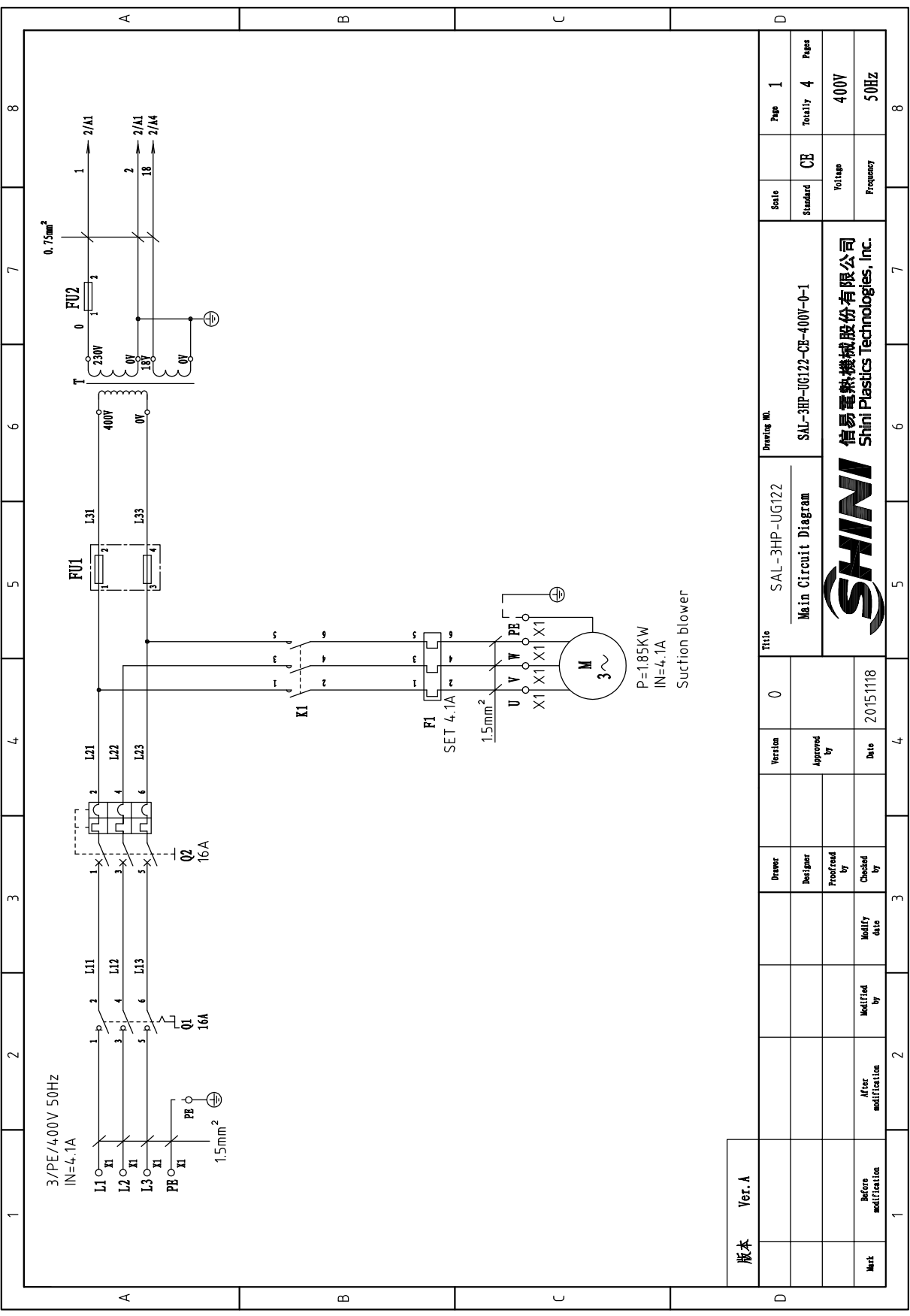
| Subscript | Function | Description |
|-----------|--------------------------|---|
| 1 | Material level signal | Connect to material level signal |
| 2 | GND | Connect to material level sensor ground |
| 3 | 24VDC | Connect to material level sensor 24VDC |
| 4 | Diaphragm solenoid valve | Connect to solenoid valve signal 24VDC |

| Subscript | Function | Description |
|-----------|----------------------------|---|
| 1 | Material level signal | Connect to material level signal |
| 2 | GND | Connect to material level sensor ground |
| 3 | 24VDC | Connect to material level sensor 24VDC |
| 4 | Diaphragm solenoid valve 2 | Connect to solenoid valve signal 24VDC |

Power in
Suction blower
Vacuum breaking valve (Option)
Shut-off valve of main machine (Only for 3HP UP)Purging solenoid valve of main machine (For 10HP and models above)

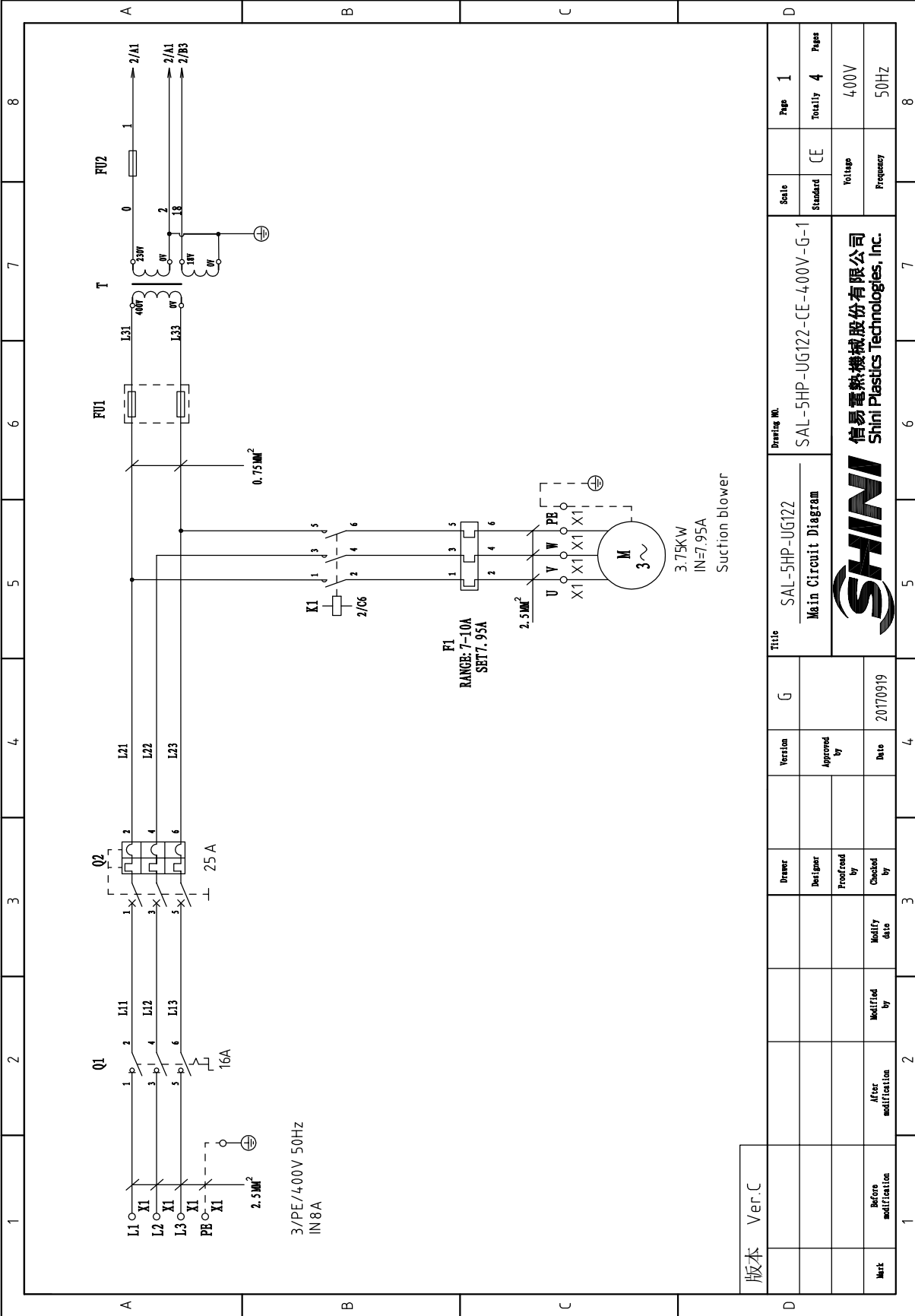
| Title | | Drawing No. | | Scale | | Page | |
|------------------------------|--|---|--|-----------|--|-----------------|--|
| SAL-2HP-UG122 | | SAL-UG122-CE-400V-F-3 | | CE | | 3 | |
| Electrical Components Layout | | | | Standard | | Totally 4 Pages | |
| SHINI | | 信易塑料机械股份有限公司 Shini Plastics Technologies, Inc. | | Voltage | | 400V | |
| Mark | | Before modification | | Frequency | | 50Hz | |
| After modification | | 20130625 | | | | | |
| Designer | | Approved by | | | | | |
| Proofread by | | Date | | | | | |
| Checked by | | Date | | | | | |
| Modify date | | Date | | | | | |
| Revision | | F | | | | | |

1 2 3 4 5 6 7 8



| | |
|-------------|---------------------|
| 版本 | Ver. A |
| Next | Before modification |
| | After modification |
| | Modified by |
| | Modify date |
| | Checked by |
| | Proof/read by |
| | Designer |
| | Drawer |
| Version | 0 |
| Approved by | |
| Date | 20151118 |

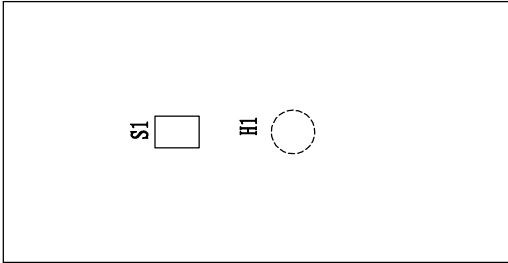
| | | | | | | | |
|---|--|---------------|--|-------------|--|---------------------------|--|
| Title | | SAL-3HP-UG122 | | Drawing No. | | SAL-3HP-UG122-CB-400V-0-1 | |
| Main Circuit Diagram | | Scale | | Page 1 | | Page 4 | |
| SHINI 信易塑料机械股份有限公司 Shini Plastics Technologies, Inc. | | Standard | | CE | | Voltage | |
| | | | | | | 400V | |
| | | | | | | Frequency | |
| | | | | | | 50Hz | |
| | | | | | | 8 | |



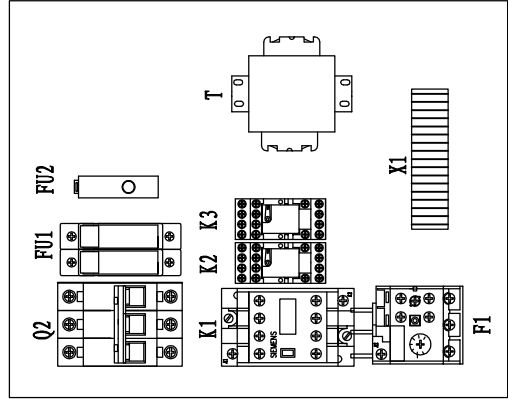
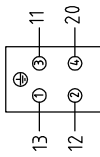
版本 Ver.C

| Title | | Drawing No. | | Scale | Page |
|----------------------|---------------------|----------------------------|--|----------------|------|
| SAL-5HP-UG122 | | SAL-5HP-UG122-CE-4.00V-G-1 | | CE | 1 |
| Main Circuit Diagram | | | | Totally 4 | |
| | | | | Voltage 400V | |
| | | | | Frequency 50Hz | |
| Version | Approved by | Date | | | |
| | | 20170919 | | | |
| Drawer | Designer | Proof/read by | | | |
| | | | | | |
| Check by | Modify date | Modified by | | | |
| | | | | | |
| Work | Before modification | After modification | | | |
| | | | | | |

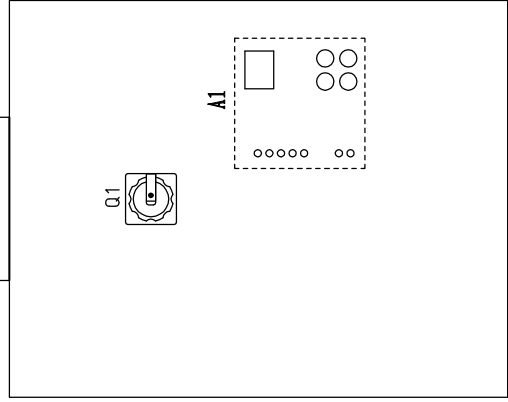
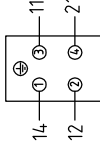




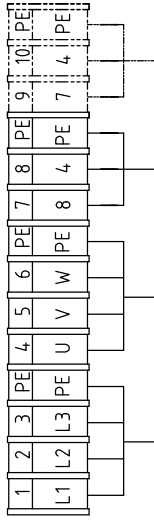
X2 Heavy lead joint for connecting hopper 1 and the main machine)



X3 Heavy lead joint for connecting hopper 2 and the main machine)



X1



Power in
Suction blower
Vacuum breaking valve
Shut-off valve (Option)

| Subscript | Function | Description |
|-----------|--------------------------|--|
| 1 | Material level signal 2 | Connect to material level signal 2 |
| 2 | GND | Connect to GND terminal of sensor 2 and terminal of solenoid valve |
| 3 | 24VDC | Connect to material level sensor 2 24VDC |
| 4 | Diaphragm solenoid valve | Connect to solenoid valve signal 2 24VDC |

| Subscript | Function | Description |
|-----------|--------------------------|--|
| 1 | Material level signal 1 | Connect to material level signal 1 |
| 2 | GND | Connect to GND terminal of sensor 1 and terminal of solenoid valve |
| 3 | 24VDC | Connect to material level sensor 1 24VDC |
| 4 | Diaphragm solenoid valve | Connect to solenoid valve signal 1 24VDC |

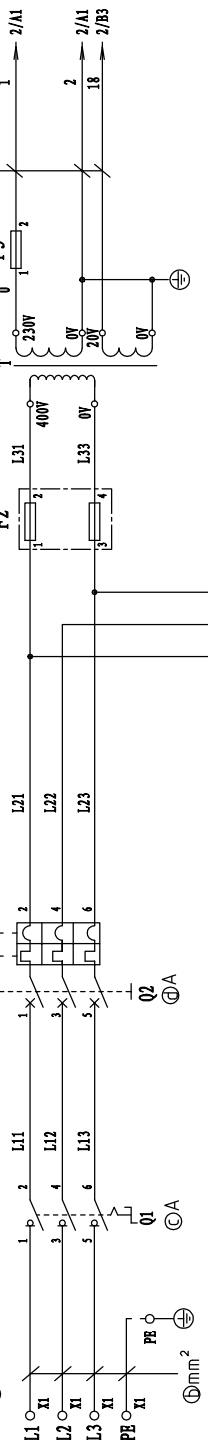
版本 Ver.C

| Title | | Drawing No. | |
|---|--|----------------------------|--------|
| SAL-5HP-UG122 | | SAL-5HP-UG122-CE-4.00V-G-3 | |
| Electrical Components Layout | | Scale | Page 3 |
| | | Standard | CE |
| | | Voltage | |
| | | 4.00V | |
| | | Frequency | |
| | | 50Hz | |
| SHINI 信易塑料机械股份有限公司 Shini Plastics Technologies, Inc. | | Totally 4 Pages | |
| | | 8 | |

| Drawer | Revision | Date |
|---------------------|--------------------|----------|
| | G | 20170919 |
| Designer | Approved by | |
| Proofread by | | |
| Checked by | | |
| Modify date | | |
| Before modification | After modification | |
| 1 | 2 | 3 |
| 4 | 5 | 6 |
| 7 | 8 | |

1 2 3 4 5 6 7 8

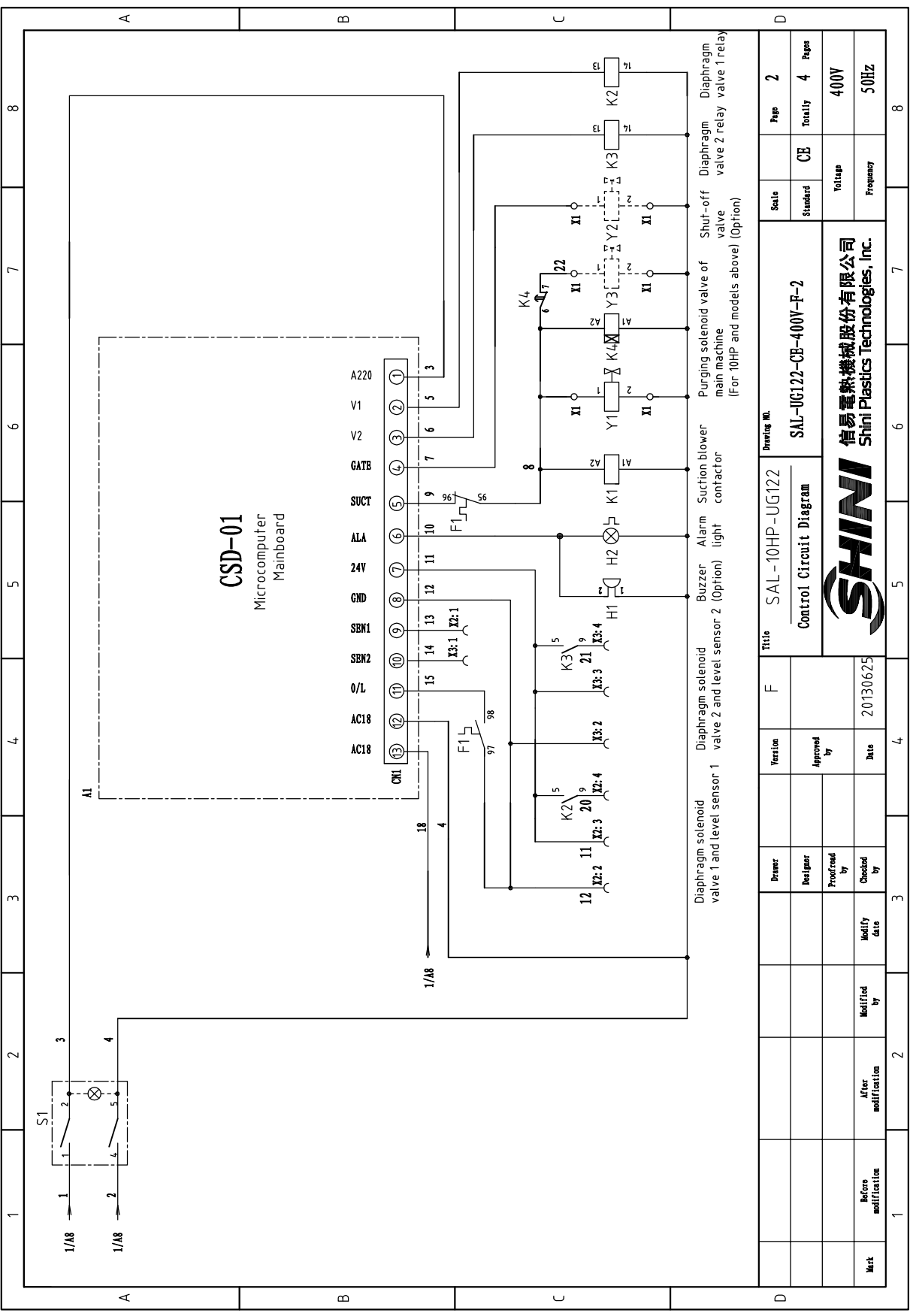
3/PE/400V 50Hz
IN=⊕A



| Mode | Symbol | (a) | (b) | (c) | (d) | (e) | (f) | (g) | (h) |
|----------------|--------|------|-----|-----|-----|------|-----|-----|------|
| SAL-10HP-UG122 | | 16.0 | 6.0 | 32 | 50 | 17.6 | 6.0 | 7.5 | 16.0 |

P=⊕ KW
IN=⊕A
Suction blower

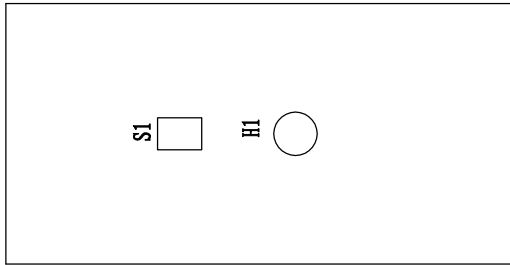
| Title | | Drawing No. | | Scale | Page 1 |
|----------------------|---------------|-----------------------|--|---|-----------|
| SAL-10HP-UG122 | | SAL-UG122-CE-400V-F-1 | | CE | Totally 4 |
| Main Circuit Diagram | | Voltage | | 400V | |
| Date | | Frequency | | 50Hz | |
| Version | Approved by | SHINI | | 信易塑料機械股份有限公司 Shini Plastics Technologies, Inc. | |
| Designer | Proof/read by | SHINI | | SHINI | |
| Checked by | Modify date | SHINI | | SHINI | |
| 1 | 2 | 3 | | 4 | |
| 20130625 | | 5 | | 6 | |
| 7 | | 8 | | 8 | |



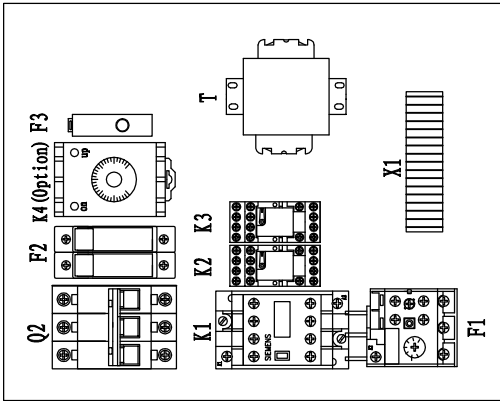
CSD-01
Microcomputer
Mainboard

Diaphragm solenoid valve 1 and level sensor 1
Diaphragm solenoid valve 2 and level sensor 2
Diaphragm solenoid valve 3
Diaphragm solenoid valve 4
Diaphragm solenoid valve 5
Diaphragm solenoid valve 6
Diaphragm solenoid valve 7
Diaphragm solenoid valve 8
Diaphragm solenoid valve 9
Diaphragm solenoid valve 10
Diaphragm solenoid valve 11
Diaphragm solenoid valve 12
Diaphragm solenoid valve 13
Diaphragm solenoid valve 14
Diaphragm solenoid valve 15
Diaphragm solenoid valve 16
Diaphragm solenoid valve 17
Diaphragm solenoid valve 18
Diaphragm solenoid valve 19
Diaphragm solenoid valve 20
Diaphragm solenoid valve 21
Diaphragm solenoid valve 22
Diaphragm solenoid valve 23
Diaphragm solenoid valve 24
Diaphragm solenoid valve 25
Diaphragm solenoid valve 26
Diaphragm solenoid valve 27
Diaphragm solenoid valve 28
Diaphragm solenoid valve 29
Diaphragm solenoid valve 30
Diaphragm solenoid valve 31
Diaphragm solenoid valve 32
Diaphragm solenoid valve 33
Diaphragm solenoid valve 34
Diaphragm solenoid valve 35
Diaphragm solenoid valve 36
Diaphragm solenoid valve 37
Diaphragm solenoid valve 38
Diaphragm solenoid valve 39
Diaphragm solenoid valve 40
Diaphragm solenoid valve 41
Diaphragm solenoid valve 42
Diaphragm solenoid valve 43
Diaphragm solenoid valve 44
Diaphragm solenoid valve 45
Diaphragm solenoid valve 46
Diaphragm solenoid valve 47
Diaphragm solenoid valve 48
Diaphragm solenoid valve 49
Diaphragm solenoid valve 50
Diaphragm solenoid valve 51
Diaphragm solenoid valve 52
Diaphragm solenoid valve 53
Diaphragm solenoid valve 54
Diaphragm solenoid valve 55
Diaphragm solenoid valve 56
Diaphragm solenoid valve 57
Diaphragm solenoid valve 58
Diaphragm solenoid valve 59
Diaphragm solenoid valve 60
Diaphragm solenoid valve 61
Diaphragm solenoid valve 62
Diaphragm solenoid valve 63
Diaphragm solenoid valve 64
Diaphragm solenoid valve 65
Diaphragm solenoid valve 66
Diaphragm solenoid valve 67
Diaphragm solenoid valve 68
Diaphragm solenoid valve 69
Diaphragm solenoid valve 70
Diaphragm solenoid valve 71
Diaphragm solenoid valve 72
Diaphragm solenoid valve 73
Diaphragm solenoid valve 74
Diaphragm solenoid valve 75
Diaphragm solenoid valve 76
Diaphragm solenoid valve 77
Diaphragm solenoid valve 78
Diaphragm solenoid valve 79
Diaphragm solenoid valve 80
Diaphragm solenoid valve 81
Diaphragm solenoid valve 82
Diaphragm solenoid valve 83
Diaphragm solenoid valve 84
Diaphragm solenoid valve 85
Diaphragm solenoid valve 86
Diaphragm solenoid valve 87
Diaphragm solenoid valve 88
Diaphragm solenoid valve 89
Diaphragm solenoid valve 90
Diaphragm solenoid valve 91
Diaphragm solenoid valve 92
Diaphragm solenoid valve 93
Diaphragm solenoid valve 94
Diaphragm solenoid valve 95
Diaphragm solenoid valve 96
Diaphragm solenoid valve 97
Diaphragm solenoid valve 98
Diaphragm solenoid valve 99
Diaphragm solenoid valve 100

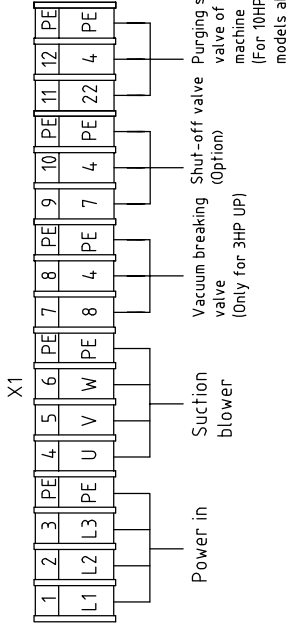
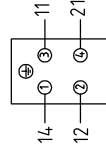
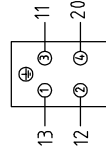
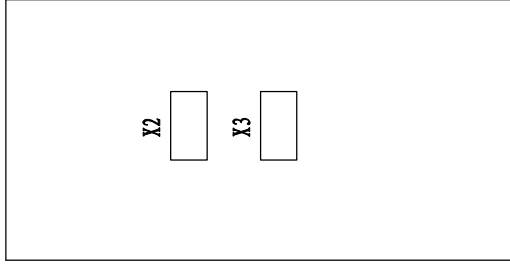
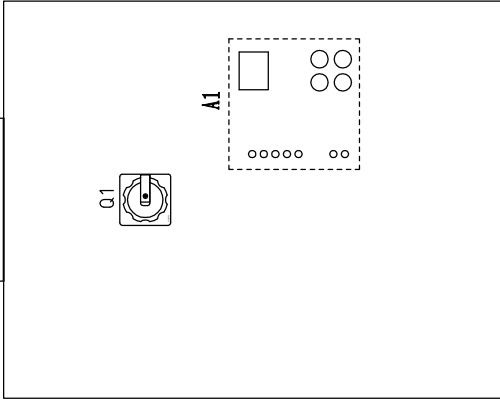
| | | | | | |
|---------------------|-------------|---|--|-----------|------|
| Drawing No. | | SAL-UG122-CE-400V-F-2 | | Page | 2 |
| Title | | Control Circuit Diagram | | Standard | CE |
| Version | | F | | Totally | 4 |
| Designer | Approved by | SHINI | | Frequency | 50Hz |
| Proffred by | Date | 信易塑料机械股份有限公司 Shini Plastics Technologies, Inc. | | | |
| Checked by | 20130625 | | | | |
| Modify date | | | | | |
| After modification | | | | | |
| Before modification | | | | | |
| Mark | | | | | |



X2) Heavy lead joint for connecting hopper 1 and the main machine)



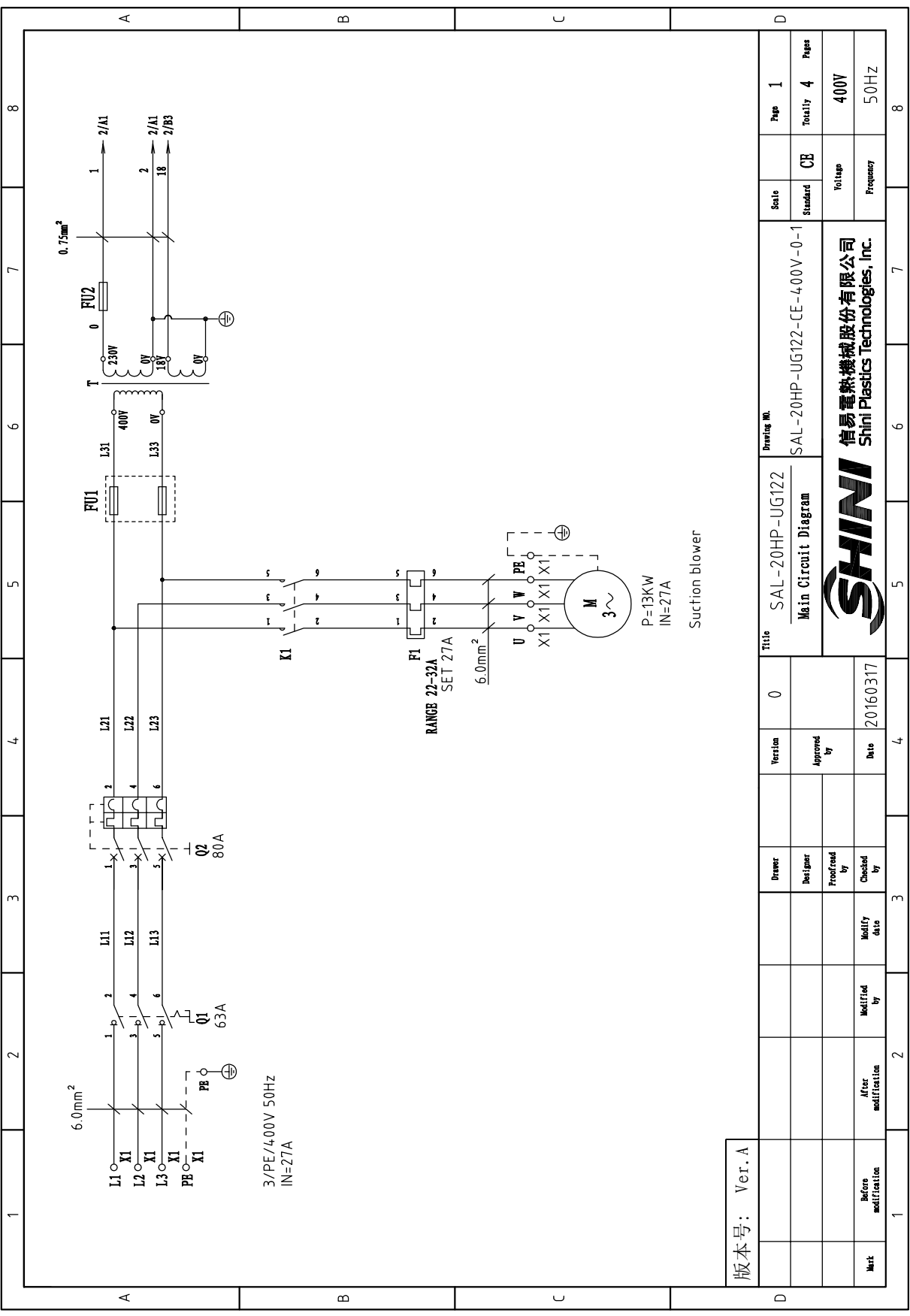
X3) Heavy lead joint for connecting hopper 2 and the main machine)



| Subscript | Function | Description |
|-----------|----------------------------|---|
| 1 | Material level signal | Connect to material level signal |
| 2 | GND | Connect to material level sensor signal GND |
| 3 | 24VDC | Connect to material level sensor 24VDC |
| 4 | Diaphragm solenoid valve 1 | Connect to solenoid valve signal 24VDC |

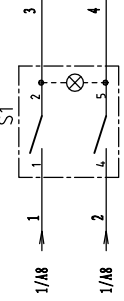
| Subscript | Function | Description |
|-----------|----------------------------|---|
| 1 | Material level signal | Connect to material level signal |
| 2 | GND | Connect to material level sensor signal GND |
| 3 | 24VDC | Connect to material level sensor 24VDC |
| 4 | Diaphragm solenoid valve 2 | Connect to solenoid valve signal 24VDC |

| Title | | Revision | | Drawing No. | |
|-----------------------------------|--|--------------------|--|----------------|--|
| SAL-10HP-UG122 | | F | | SAL-10HP-UG122 | |
| Electrical Components Layout | | Approved by | | Standard | |
| SHINI | | Date | | CE | |
| 信易塑料機械股份有限公司 | | 20130625 | | Voltage | |
| Shini Plastics Technologies, Inc. | | | | 400V | |
| Mark | | Modify date | | Frequency | |
| Before modification | | After modification | | 50Hz | |
| 1 | | 3 | | Page 3 | |
| 2 | | 4 | | Totally 4 | |
| 3 | | 5 | | Pages | |
| 4 | | 6 | | 8 | |

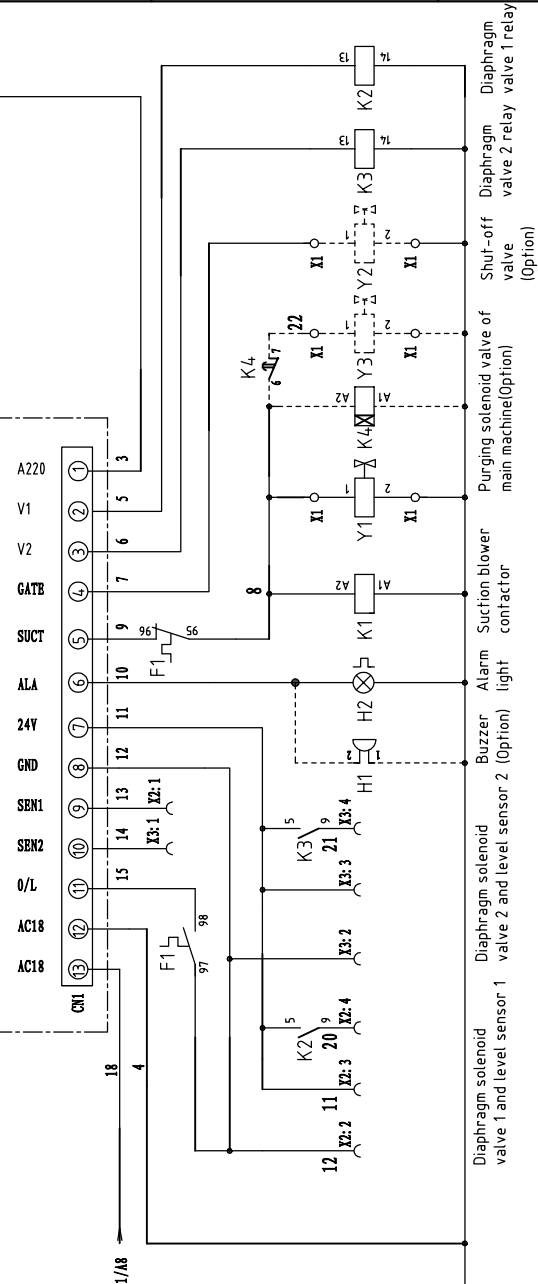


版本号: Ver.A

| | | | | | | | | | |
|----------------------|--|----------------|--|---------------|--|-----------------------------------|--|-----------|-----------|
| Title | | SAL-20HP-UG122 | | Drawing No. | | SAL-20HP-UG122-CE-400V-0-1 | | Scale | Page 1 |
| Version | | 0 | | Designer | | Standard | | Standard | Totally 4 |
| Approved by | | | | Proof/read by | | Checked by | | Voltage | 400V |
| Date | | 20160317 | | Modify date | | Modified by | | Frequency | 50Hz |
| Main Circuit Diagram | | SHINI | | 信易塑料机械股份有限公司 | | Shini Plastics Technologies, Inc. | | | |



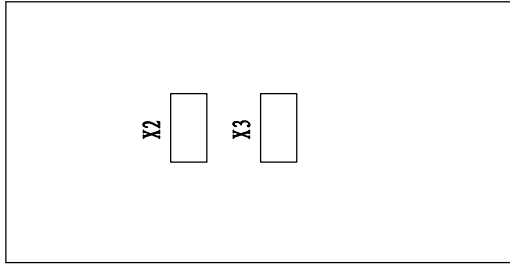
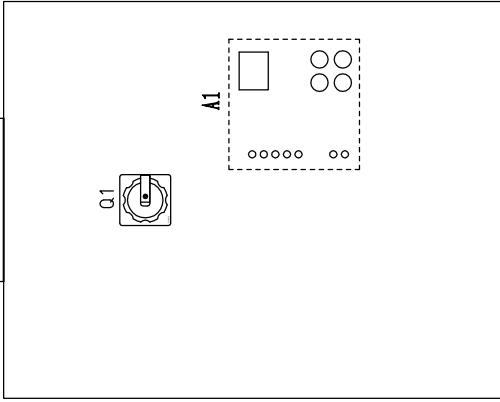
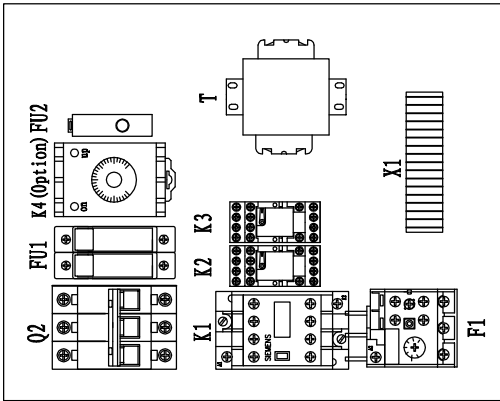
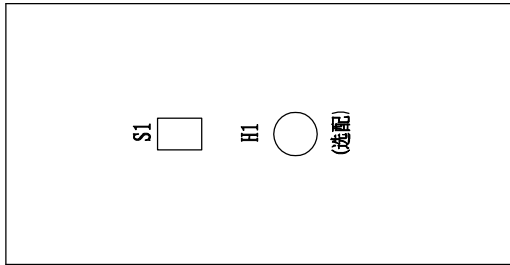
CSD-01 Microcomputer Mainboard



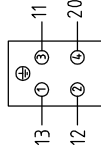
版本号: Ver.A

| Title | | Drawing No. | | Scale | Page |
|--|----------|----------------------------|--|-------------|------|
| SAL-20HP-UG122 | | SAL-20HP-UG122-CE-400V-0-2 | | Standard | 2 |
| Control Circuit Diagram | | | | CE | 4 |
| SHINI 信易塑料机械股份有限公司 Shini Plastics Technologies, Inc. | | | | Total | 400V |
| | | | | Frequency | 50Hz |
| Version | 0 | Designer | | Checked by | |
| Approved by | | Proofread by | | Modify date | |
| Date | 20160317 | Modified by | | | |

1 2 3 4 5 6 7 8

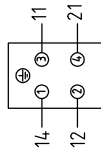


X2 Heavy load joint for connecting hopper 1 and the main machine)



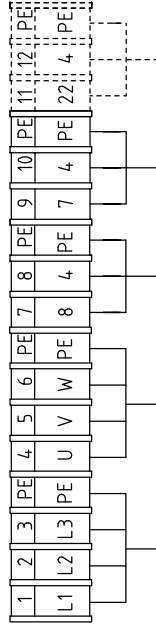
| Subscript | Function | Description |
|-----------|--------------------------|---|
| 1 | Material level signal | Connect to material level signal |
| 2 | GND | Connect to material level sensor and terminal of solenoid valve COM |
| 3 | 24VDC | Connect to material level sensor 24VDC |
| 4 | Diaphragm solenoid valve | Connect to solenoid valve signal 24VDC |

X3 Heavy load joint for connecting hopper 2 and the main machine)



| Subscript | Function | Description |
|-----------|----------------------------|---|
| 1 | Material level signal | Connect to material level signal |
| 2 | GND | Connect to material level sensor and terminal of solenoid valve COM |
| 3 | 24VDC | Connect to material level sensor 24VDC |
| 4 | Diaphragm solenoid valve 2 | Connect to solenoid valve signal 24VDC |

X1



Power in
Vacuum breaking valve
Shut-off valve
Purging solenoid valve of main machine
(Only for 3HP UP)

版本号: Ver.A

| Title | | Drawing No. | | Scale | Page |
|---|--|-----------------------------|--|-------------|------|
| SAL-20HP-UG122 | | SAL-20HP-UG122-CE-4.00V-0-3 | | Standard | 3 |
| Electrical Components Layout | | Standard | | CE | 4 |
| SHINI 信易塑料机械股份有限公司 Shini Plastics Technologies, Inc. | | Voltage | | 400V | |
| Mark | | Frequency | | 50Hz | |
| Before modification | | After modification | | Modify date | |
| Designer | | Checked by | | Date | |
| Proofread by | | Approved by | | Totality | |
| Revision | | 0 | | Page | |
| Drawer | | 20160317 | | 4 | |

1 2 3 4 5 6 7 8

| 1 | 2 | | 3 | 4 | 5 | 6 | 7 | 8 |
|-----|--------|----------------------|--------------|----------------------|-------------------|--------|-----------------|---------|
| NO. | Symbol | Name | Manufacturer | Type | Specification | Number | Material number | Remark |
| 1 | Q1 | Main switch | SIEMENS | 3LD25 | 63A | 1 | YE10250400000 | |
| 2 | Q2 | Circuit breakers | TECO | BM100D/3080 | 80A | 1 | YE40308003000 | |
| 3 | K1 | Contactors | SIEMENS | 3RT5035-1AN20 | 220V 50/60Hz | 1 | YE00503500000 | A |
| 4 | F1 | Overload relays | SIEMENS | 3RU5136-4EB0 | 22-32A | 1 | YE01223200000 | |
| 5 | K2 K3 | Middle relay | WEIDEMILE | DRM570730LT | 230V 50/60Hz | 2 | YE03570700000 | |
| 6 | K4 | Timer | YUYUN | TH3A-NAB | 230V 50/60Hz | 1 | YE86300600000 | (3) |
| 7 | FU1 | Fuse base | CHNT | RT28-32 | 500V 32A | 1 | YE41032200000 | |
| 8 | | Fuse core | MRO | 10x38 | 500V 2A | 2 | YE46002000100 | |
| 9 | FU2 | Fuse | YINDA | FS-10 | 250V 2A | 1 | YE41001000000 | |
| 10 | T | Transformer | BAIYUN | IN=400V OUT=230V/18V | 500mA | 1 | YE70504000000 | |
| 11 | S1 | Alternative switch | ---- | ---- | 4P (WH) | 1 | YE10210400000 | B |
| 12 | H1 | Buzzer | HITPOINT | PF-35A | 60-250VAC 50/60HZ | 1 | YE84003500000 | (2) |
| 13 | H2 | Alarm light | SHINI | LTE-3051 | 230VAC 50/60HZ | 1 | YE83305100200 | |
| 14 | A1 | Circuit board | YUYUN | CSD-01 | 18VAC 50/60Hz | 1 | YE80101100000 | |
| 15 | X1 | Terminal board | --- | 6.0 | 800V 41A | 6 | YE10600000000 | |
| 16 | | Terminal board | --- | 6.0PE | | 2 | YE61063500000 | |
| 17 | | Terminal board | --- | 2.5 | 800V 24A | 4 | YE61250000000 | |
| 18 | | Terminal board | --- | 2.5PE | | 2 | YE61253500000 | |
| 19 | | Terminal board | --- | 2.5 | 800V 24A | 2 | YE61250000000 | (3) |
| 20 | | Terminal board | --- | 2.5PE | | 1 | YE61253500000 | (3) |
| 21 | X2 X3 | Heavy-duty connector | SIBAS | HA-004-F(Female) | 4P | 2 | YE60000040000 | |
| 22 | M | Motor | SHINI | 20HP | 400V 50/60Hz | 1 | ---- | (1) |
| 23 | Y1 | Solenoid valve | ---- | ---- | 230V 50/60Hz | 1 | ---- | (1) |
| 24 | Y2 | Solenoid valve | ---- | ---- | 230V 50/60Hz | 1 | ---- | (1) (3) |
| 25 | Y3 | Solenoid valve | ---- | ---- | 230V 50/60Hz | 1 | ---- | (1) (4) |

版本号: Ver. A Note: (1) Means not part of control box. (2)Means it's equipped with buzzer.(3)Means optional purging solenoid valve of main machine.(4) Means optional shut-off solenoid valve.

| D | 1 | 2 | 3 | 4 | 5 | 6 | 7 | 8 |
|------|---------------------|--------------------|-------------|----------------------------|-----------------------------------|--------------|----------------------------|---------|
| Mark | Before modification | After modification | Modified by | Modify date | Checked by | Proofread by | Designer | Version |
| | | | | 20160317 | | | | 0 |
| | | | | Title | SAL-20HP-UG122 | Drawing No. | SAL-20HP-UG122-CE-400V-0-4 | Scale |
| | | | | Electrical Components List | Standard | CE | Total | Page |
| | | | | SHINI | Shini Plastics Technologies, Inc. | Total | 4 | 4 |
| | | | | 400V | Frequency | 50Hz | | |