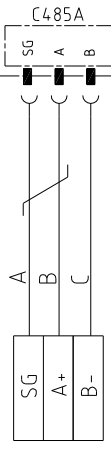


1/A8 1/A8

RS485 Communication interface board

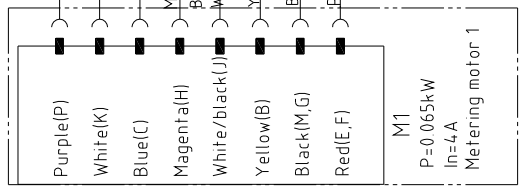


A1 (SV-11)

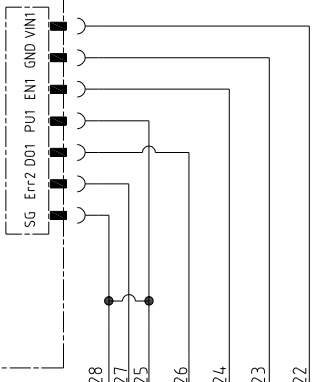


2-3 Short circuit: extrusion mode

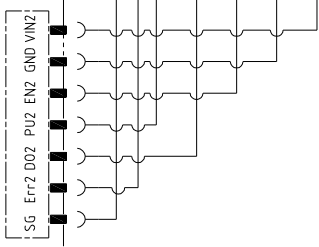
BG65X50S1



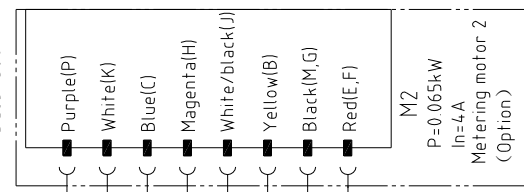
MOTOR1



MOTOR2



BG65X50S1



Ver.G

Mark	Before modification	Modified by	Modify date	Checked by	Date	20180109	Title	SCM(SV-11)	Drawing NO.	Scale	Page	Pages		
	After modification	Modified by	Modify date	Checked by	Date	20180109								
							Title		SCM-CE-230V-C-3		Page 3			
							Title		(Extrusion mode) circuit diagram 3		Standard CE		Totally 5	
							Voltage		230V		Frequency		50/60Hz	
							Frequency		50/60Hz		Voltage		230V	
							Frequency		50/60Hz		Voltage		230V	
							Frequency		50/60Hz		Voltage		230V	



1		2		3		4		5		6		7		8		
NO.	Symbol	Name	Manufacturer	Type	Specification	Number	Material number	Remark								
1	A1	PCB	YUYUN	Circuit board SV-11 (24VDC)	24VDC	1	YE801124-00500									
2	S1	Power switch+plug cable	MISUMI	APCJ-101-1FR-03	Alternative switch+power plug-in (AC90-56A-53-375-2)	1	YE15111300000									
3	A	Fuse	SHINI	5x20	10A 250V	1	YE46010250000									
4		CE power wire	---	1.0x3P(wire length 3m)	10A	1	YE50075300500	CE standard wiring								
5		GB power Line	---	0.75x3P(wire length 3m)	16A	1	YE50316300000	GB standard wiring								
6	H	Buzzer	HITPOINT	PK-27A	24VDC	1	YE84-002700000									
7	U	DC Power	MW	HRP-150-24	IN=115/230V OUT=24VDC 6.5A	1	YE7124-6500000									
8	X1 X2	Metal connector	PLT	PLS-24-10-RF+PM	10P	2	YE6224-104-0000									
9	X3	Metal connector	PLT	PLT-254-PM	4P	1	YE680254-00000	(2)								
10			PLT	PLT-254-RF	4P	1	YE680254-00100	(2)								
11	X4	Metal connector	PLT	PLT-162-RM/PLT-162-PF	2P	1	YE68016200100/YE68016200000									
12	X5	Metal connector	PLT	PLT-162-RM/PLT-162-PF	2P	1	YE68016200100/YE68016200000	(2)								
13	X6 X7	Metal connector	PLT	AQF-16	3P	2	YE6216304-00000/YE62163000100	(3)								
14	K1	Mid-relay	WEIDEMULLER	DRM270024LT	24VDC	1	YE032724-00000	(2)								
15	S2	Micro switch	TEND	TZ-3102	250V~5(4)A	1	YE16310200000	(1) (2)								
16	S3 S4	Capacitance switch	IFM	KI5082	10~36VDC	2	YE15508200000	(1) (3)								
17	M1	Motor	ALCTEL	BG65 1.38	65W 24VDC	2	YM50652500000	(1)								
18	M2	Motor	ALCTEL	BG65 1.38	65W 24VDC	2	YM50652500000	(1) (4)								
19	M3	Motor	JSCC	---	0.09KW 1/230V 50/60HZ	1	---	(1) (2)								
Ver.G																
Notes: (1)Means it's not the material inside the control box; (2)(2) Means accessories for mixing motor; (3)Stand for level switch option; (4)Stand for double shooter option.																
D		Title		SCM(SV-11)		Drawing NO.		Scale		Page		5				
		Electrical Components List		SCM-CE-230V-C-5		Standard		CE		Totally		5				
Mark		After modification		Modified by		Date		Voltage		Frequency		230V				
1		2		3		4		5		6		7		8		
		SHINI		信易電熱機械股份有限公司		Shini Plastics Technologies, Inc.		50/60HZ								