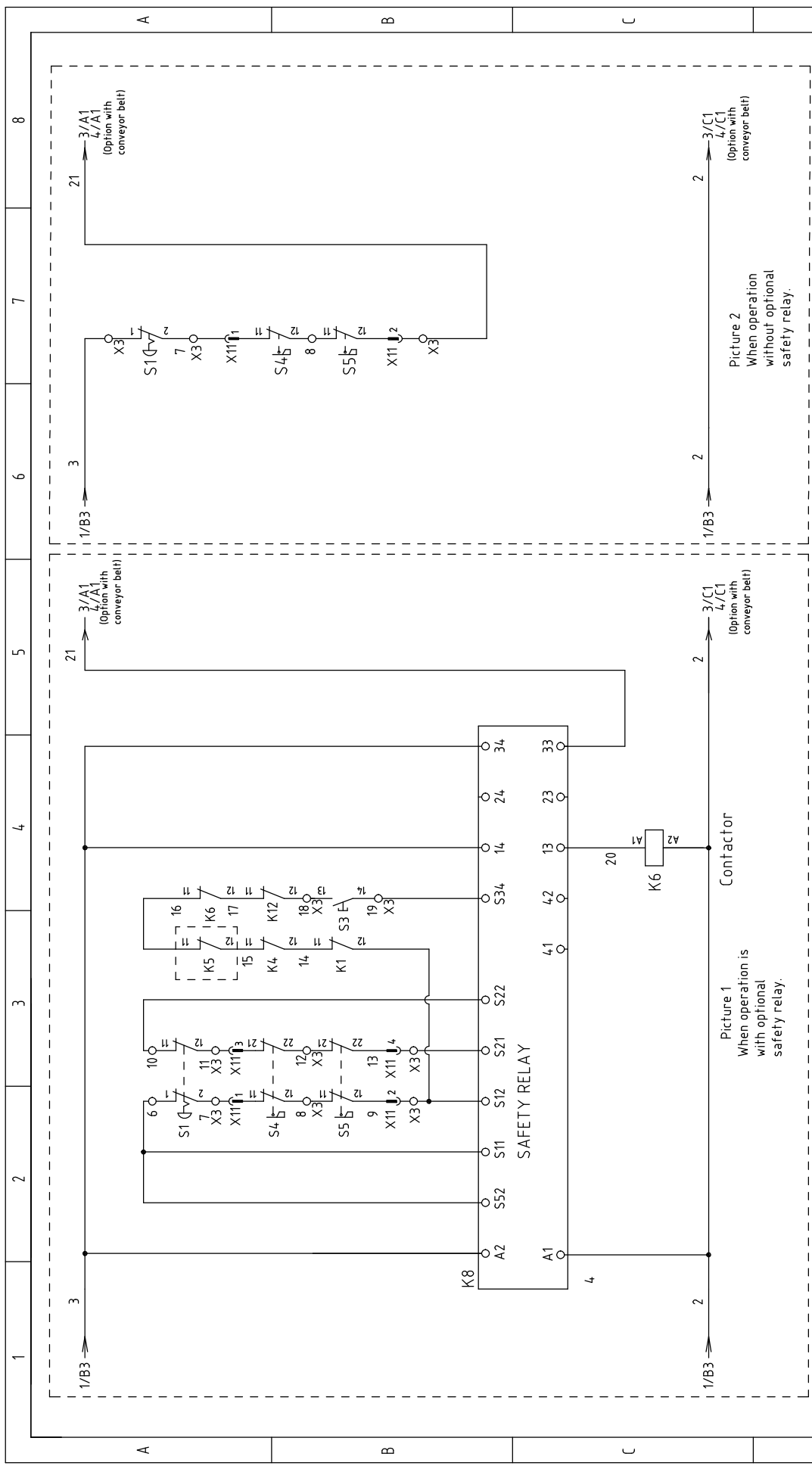


MODE	(a)	(b)	(c)	(d)	(e)	(f)
SG-4360	63	25	100	28-40	32	6
SG-4360H	75	35	125	36-45	41	10

SYMBOL	(g)	(h)	(i)	(j)
Conveying blower	10	3.5-5	4.4	1.5
Power increased conveying blower	32	14-20	14.5	1.5

Ver.D	Title	SG-4360(H)		Drawing No.	SG-4360(H)-CE-400V-L-1		Page	1
	Version	L	Approved by	Standard	CE	Totally	12	Pages
Mark	Before modification	Modified by	Modify date	Checked by	Date	Voltage	3Φ400V	
						Frequency	50Hz	
								8





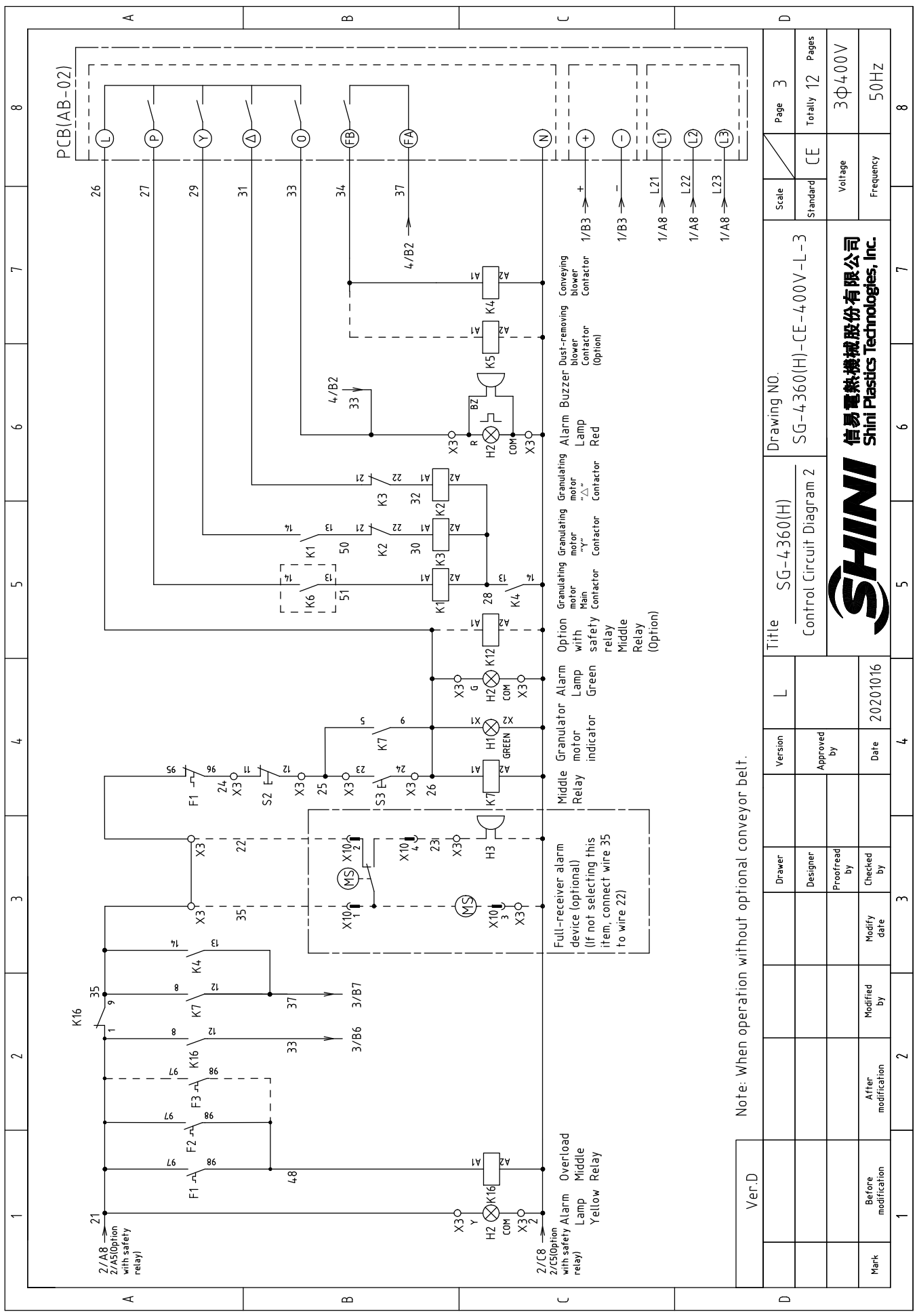
Ver.D	Drawing No.		Page 2	
	SG-4360(H)		Totally 12 Pages	
Control Circuit Diagram 1		SG-4360(H)-CE-400V-L-2		CE
Title		Voltage		3Φ400V
Version		Frequency		50HZ
L		Date		20201016
Approved by		Date		4
Checked by		Date		3
Modified by		Date		2
Before modification		Date		1
Mark		Date		8

Picture 1  
When operation is with optional safety relay.

Picture 2  
When operation without optional safety relay.

信易電熱機械股份有限公司  
Shini Plastics Technologies, Inc.

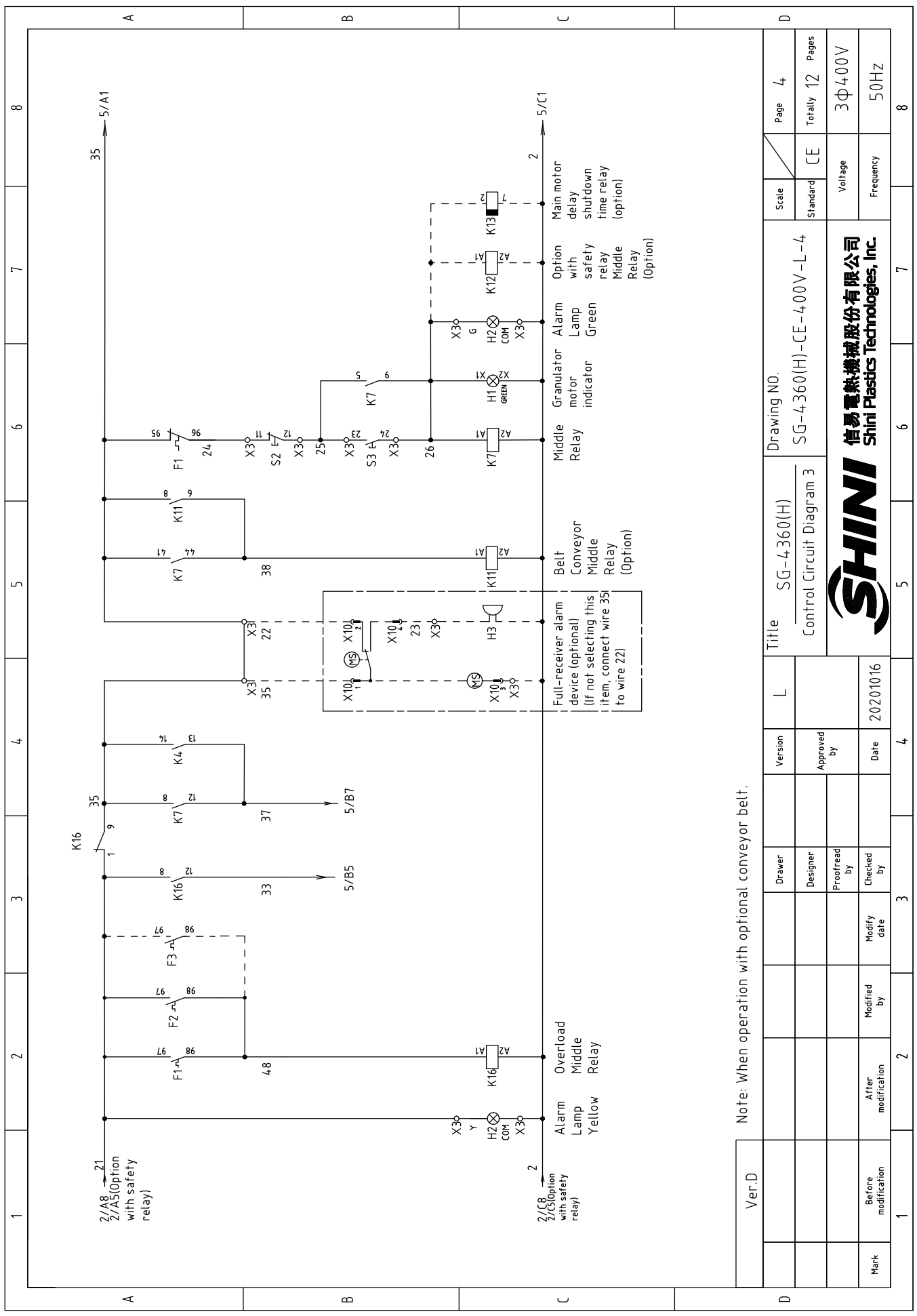
SHINI



Note: When operation without optional conveyor belt.

Ver.D	L	Version	Title	Drawing No.	Scale	Page					
					Standard	Totally					
Mark	Before modification	After modification	Modified by	Date	Checked by	Proofread by	Designer	Drawer	Approved by	SG-4360(H)	
										Control Circuit Diagram 2	
											CE
											3Φ400V
											50HZ
1	2	3	4	5	6	7	8				

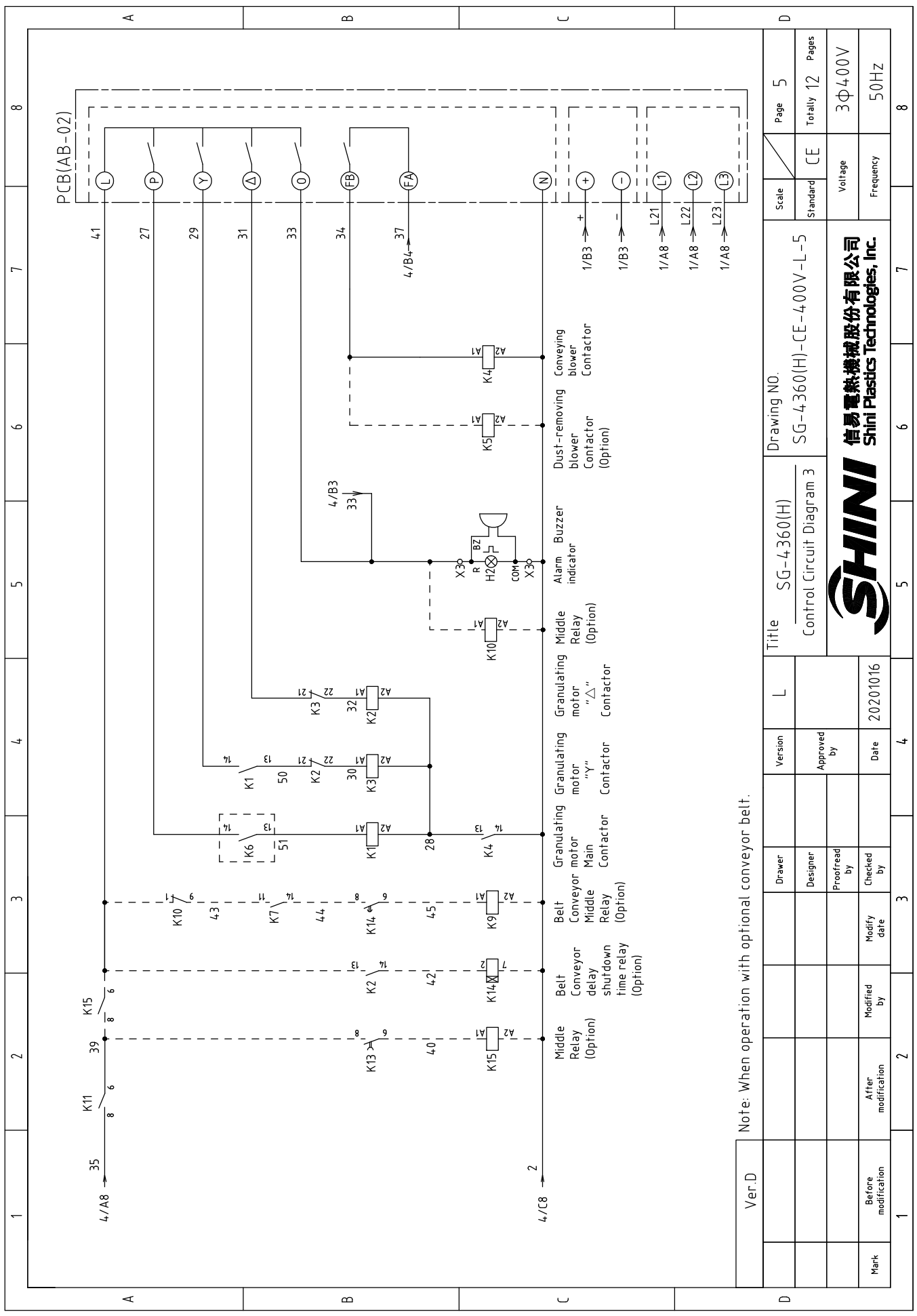




Note: When operation with optional conveyor belt.

Ver.D	Drawing No.		Scale	Page
	SG-4360(H) Control Circuit Diagram 3		Standard CE	Totally 12 Pages
Mark	Before modification	Modified by	Modified date	Voltage 3Φ400V Frequency 50HZ
	After modification	Checked by	Date	
Title		Version	8	
L		Approved by	7	
20201016		Date	6	
3		3	5	
2		2	4	
1		1	3	

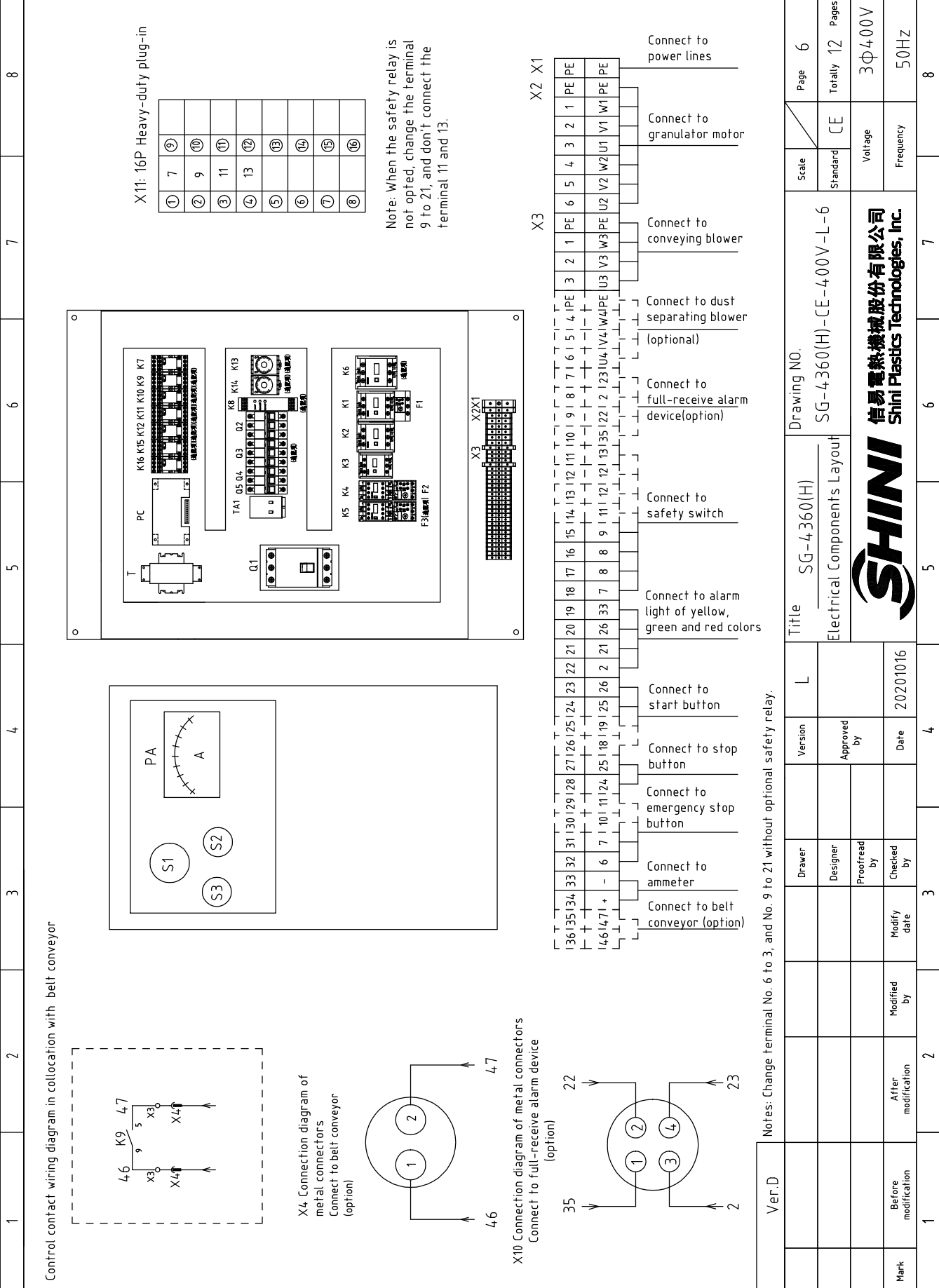




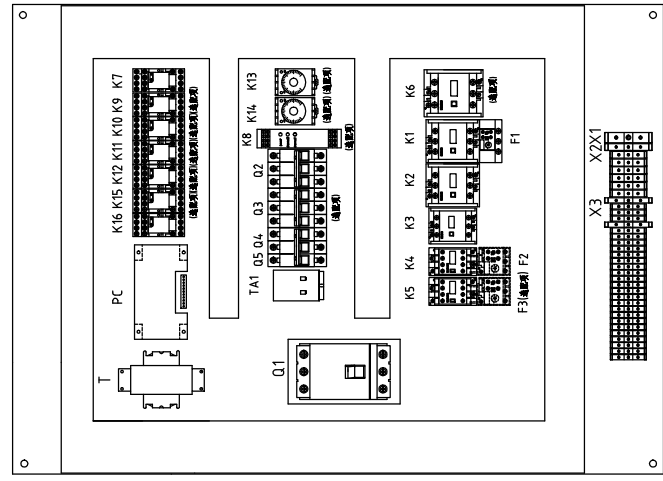
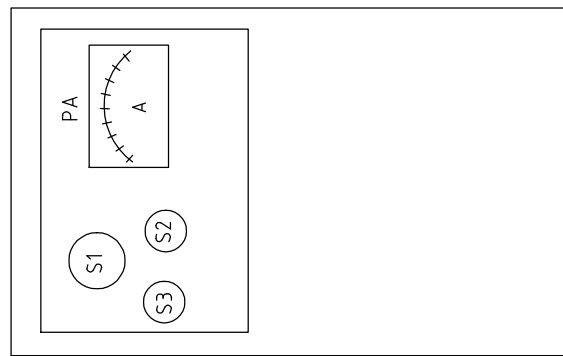
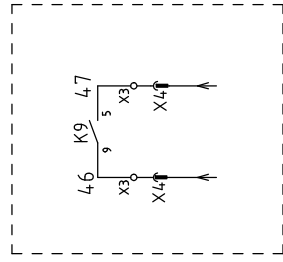
Note: When operation with optional conveyor belt.

Ver.D	Title		Drawing No.		Scale	Page
	SG-4360(H)		SG-4360(H)-CE-400V-L-5		CE	5
	Control Circuit Diagram 3				Standard	Totally 12
					Voltage	Pages
					Frequency	3Φ400V
						50HZ
Mark	Before modification	After modification	Modified by	Modify date	Checked by	Date
1						4
2						3
3						4
4						5
5						6
6						7
7						8
8						

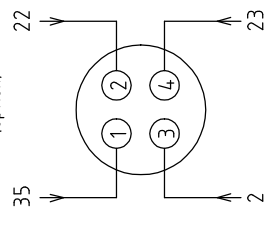




Control contact wiring diagram in collocation with belt conveyor




X10 Connection diagram of metal connectors  
Connect to full-receive alarm device (option)



Notes: Change terminal No. 6 to 3, and No. 9 to 21 without optional safety relay.

Ver.D	Title	SG-4360(H)		Drawing No.	SG-4360(H)-CE-400V-L-6		Scale	Page 6
		Electrical Components Layout			Standard	CE		
Mark	Before modification	After modification	Modified by	Modify date	Checked by	Date	20201016	4
	Drawer	Designer	Proofread by	Approved by				
	33	3	3	3	3	3	3	3
	2	2	2	2	2	2	2	2
	1	1	1	1	1	1	1	1
	Voltage		3Φ400V		Frequency		50HZ	
	Page		6		Totally		12	
	Title		SG-4360(H)		Drawing No.		SG-4360(H)-CE-400V-L-6	
	Electrical Components Layout				Standard		CE	
	Checked by				Date		20201016	
	Approved by				Version		L	
	3		3		3		3	
	2		2		2		2	
	1		1		1		1	
	Voltage		3Φ400V		Frequency		50HZ	
	Page		6		Totally		12	
	Title		SG-4360(H)		Drawing No.		SG-4360(H)-CE-400V-L-6	
	Electrical Components Layout				Standard		CE	
	Checked by				Date		20201016	
	Approved by				Version		L	
	3		3		3		3	
	2		2		2		2	
	1		1		1		1	
	Voltage		3Φ400V		Frequency		50HZ	




1		2		3		4		5		6		7		8			
NO.	Symbol	Name	Manufacturer	Type	Specification	Number	Material number	Remark									
1	Q1	Break Interlock	ABB	A1A125TMF100	100A	1	YE4111020000										
2	Q2	Circuit-breaker	TECO	BM-63C/3P	10A	1	YE40301003000										
3	Q2	Circuit-breaker	TECO	BM-63C/3P	32A	1	YE40303203000	(6)									
4	Q3	Circuit-breaker	TECO	BM-63C/3P	6A	1	YE40300603000	(2)									
5	Q4	Circuit-breaker	TECO	BM-63C/2003S 2P	3A	1	YE40200203000										
6	Q5	Circuit-breaker	TECO	BM-63C/1010S 1P	10A	1	YE40101000100										
7	K1,K2	Contact	SIEMENS	3RT5035-1AC20	40A 24VAC 50/60Hz	2	YE00503502600										
8		Auxiliary contactor	SIEMENS	3RH5921-1CA01	1NC	1	YE00592110100	(4)									
9		Auxiliary Contactor	SIEMENS	3RH5921-1CA01	1NC	1	YE00592110100										
10		Auxiliary Contactor	SIEMENS	3RH5921-1CA10	1NO	1	YE00592110000	(5)									
11		Auxiliary Contactor	SIEMENS	3RH5921-1CA10	1NO	1	YE00592110000	New									
12	K3	Contact	SIEMENS	3RT6028-1AC20	38A 24VAC 50/60Hz	1	YE00602802600										
13	K4	Contact	SIEMENS	3RT6016-1AB01	9A 24VAC 50/60Hz	1	YE00601602500										
14	K4	Contact	SIEMENS	3RT6026-1AC20	25A 24VAC 50/60Hz	1	YE00602602600	(6)									
15		Auxiliary Contactor	SIEMENS	3RH6911-1HA11	1NC+1NO	1	YE00691100100										
16	K5	Contact	SIEMENS	3RT6016-1AB02	9A 24VAC 50/60Hz	1	YE00601602600	(2)									
17	K6	Contact	SIEMENS	3RT5045-1AC20	80A 24VAC 50/60Hz	1	YE00504502600	(4)									
18		Auxiliary contactor	SIEMENS	3RH5921-1CA01	1NC	1	YE00592110100	(4)									
19		Auxiliary contactor	SIEMENS	3RH5921-1CA10	1NO	1	YE00592110000	(4)New									
20	K7	Middle relay	Honeywell	GR-2C-AC24V	24VAC	1	YE03022400300										
21	K7	Middle relay	Honeywell	GR-4C-AC24V	24VAC	1	YE03042400300	(5)									
22	K8	Safety relay	PILZ	PN0Z+2.8P	24V AC/DC	1	YE04023000000	(4)									
23	T	Sensor transformer	JIUXIN	IN=400V/415V OUT=24V	180VA	1	YE70040006700										
24	T	Sensor transformer	----	IN=400V/415V OUT=24V	350VA	1	YE70040009900	(4) New									
25	K9 K10 K11 K15	Middle relay	Honeywell	GR-2C-AC24V	24VAC	4	YE03022400300	(5)									
Ver.D																	
Notes: (1)Means it's not the material inside the control box.(2)Means optional accessories of decoupling motor.(3)Optional accessories of full-receive alarm device.(4)S1 and for optional safety relay.(5)Belt conveyor accessories.(6)Large blower power options.																	
D		Ver.D		Drawer	Designer	Version	L	Title		Drawing No.		Scale	Page	7			
				Proofread by	Approved by	Electrical Components List 1		SG-4360		SG-4360(H)-CE-400V-L-7		Standard	CE	Totally 12 Pages			
Mark		Before modification	Modified by	Checked by	Date	20201016		 <b>信易電熱機械股份有限公司</b> <b>Shini Plastics Technologies, Inc.</b>		Voltage		3Φ4.00V		Frequency		50Hz	
1		2		3		4		5		6		7		8			



1		2		3		4		5		6		7		8	
NO.	Symbol	Name	Manufacturer	Type	Specification	Number	Material number	Remark							
51			Honeywell	GK2.5PE	2.5mm <sup>2</sup> PE	1	YE60002503400	(2)							
52			Honeywell	SK2.5	2.5mm <sup>2</sup>	4	YE60002503200	(3)							
53			Honeywell	SK2.5	2.5mm <sup>2</sup>	2	YE60002503200	(5)							
54			Honeywell	SK2.5	2.5mm <sup>2</sup>	8	YE60002503200	(4)							
55			Honeywell	SK6	6mm <sup>2</sup>	3	YE60000603200	(6)							
56			Honeywell	SK6PE	6mm <sup>2</sup> PE	1	YE60000603500	(6)							
57		Terminal fittings E/GK series	Honeywell	----	PCS	4	YE6000003900								
58	X4	Metal connector	SHINI	PLT-162-RR(Male)	2P	1	YE68016200100	(1)(5)							
59	X10	Metal connector	SHINI	PLT-254-PM	4P	1	YE68025400000	(1)(3)							
60		Metal connector	SHINI	PLT-254-RF	4P	1	YE68025400100	(1)(3)							
61	X11	Heavy-duty plug-in	HARTING	16P+PE(Common socket+Female)	16P	1	YE68001601300	(1)							
62	PCB	PCB	YUYUN	AB-02	24VAC	1	YE80022400100								
63		For plastic housing SI-4-T circuit board	----	----	----	1	YR40000400100								
64	PA	Ammeter	SFIM	DH-670	100/5A	1	YE25671000000	(1)							
65	TA1	Current transformer	RATIO	RQT-10	100/5A	1	YE04100500000								
66	TA2	Current transformer	YUYUN	----	5-100A	1	----	Come with circuit board							
67	M1	Granulating motor	----	----	400V 50Hz 30kW	1	----	(1)							
68	M2	Conveying blower	----	----	400V 50Hz 2.2kW	1	----	(1)							
69	M2	Conveying blower	----	----	400V 50Hz 7.5kW	1	----	(1)(6)							
70	M3	Dust-removing blower	----	----	400V 50Hz 1.1kW	1	----	(1)(2)							
Notes: (1)Means it's not the material inside the control box.(2)Means optional accessories of decussing motor.(3)Optional accessories of full-receive alarm device.(4)Stand for optional safety relay.(5)Belt conveyor accessories.(6)Large blower power options.															
Ver.D				Title		Drawing NO.		Scale		Page		9		8	
				SG-4-360		SG-4-360(H)-CE-400V-L-9		Standard		CE		Totally		12	
				Electrical Components List 3											
Mark		Before modification		After modification		Modified by		Date		Voltage		Frequency		3Φ400V 50Hz	
1		2		3		4		5		6		7		8	



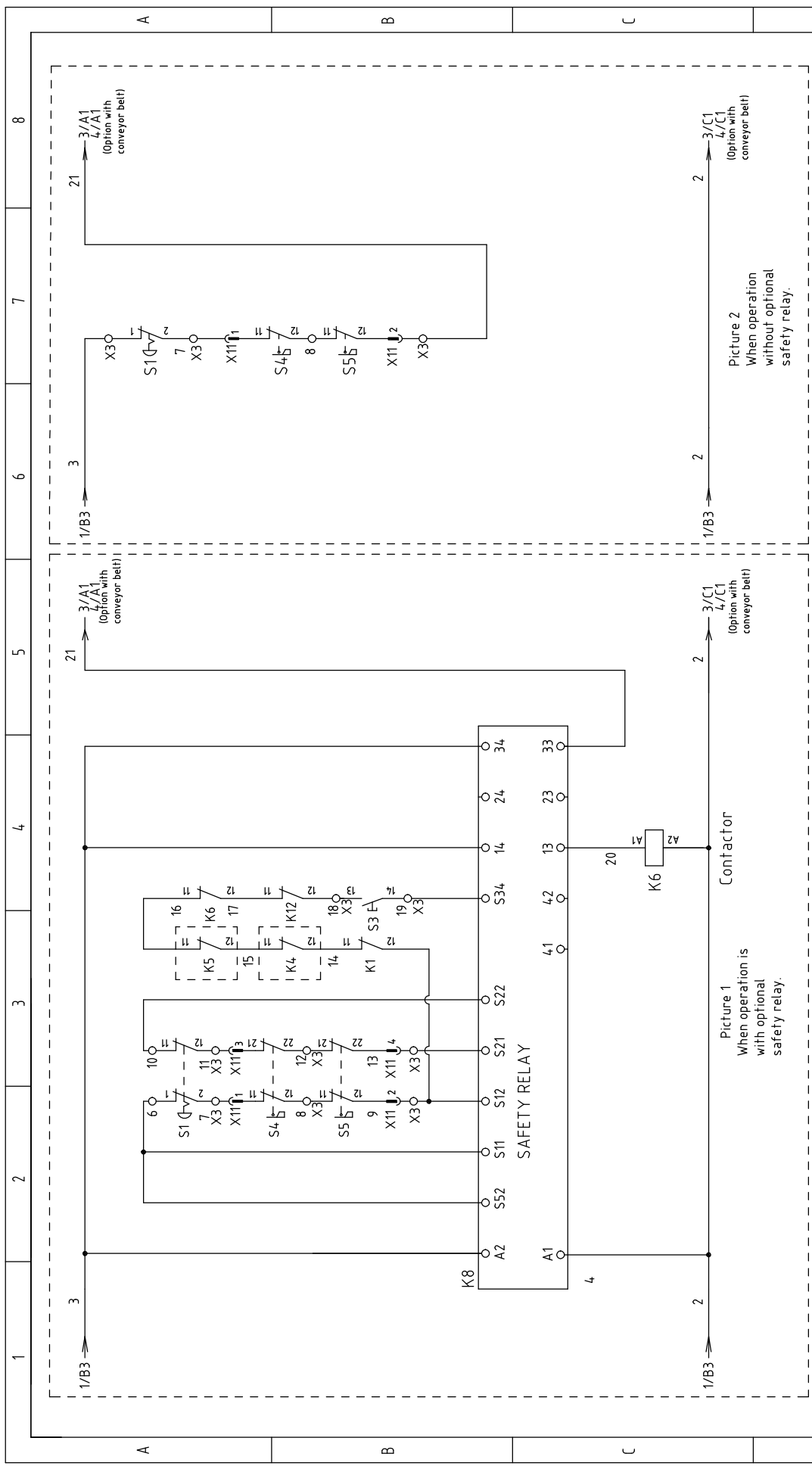
1		2		3		4		5		6		7		8		
NO.	Symbol	Name	Manufacturer	Type	Specification	Number	Material number	Remark								
1	Q1	Break Interlock	ABB	A1A125TMF125	125A	1	YE41161400000									
2	Q2	Circuit-breaker	TECO	BM-63C/3P	10A	1	YE40301003000									
3	Q2	Circuit-breaker	TECO	BM-63C/3P	32A	1	YE40303203000	(6)								
4	Q3	Circuit-breaker	TECO	BM-63C/3P	6A	1	YE40300603000	(2)								
5	Q4	Circuit-breaker	TECO	BM-63C/2003S 2P	3A	1	YE40200203000									
6	Q5	Circuit-breaker	TECO	BM-63C/1010S 1P	10A	1	YE40101000100									
7	K1,K2	Contactor	SIEMENS	3RT5036-1AC20	50A 24VAC 50/60Hz	2	YE00503602600									
8		Auxiliary Contactor	SIEMENS	3RH5921-1CA10	1NO	1	YE00592110000	New								
9	K3	Contactor	SIEMENS	3RT5035-1AC20	40A 24VAC 50/60Hz	1	YE00503502600									
10		Auxiliary Contactor	SIEMENS	3RH5921-1CA01	1NC	2	YE00592110100									
11		Auxiliary Contactor	SIEMENS	3RH5921-1CA10	1NO	1	YE00592110000	(5)								
12		Auxiliary Contactor	SIEMENS	3RH5921-1CA01	1NC	1	YE00592110100	(4)								
13	K4	Contactor	SIEMENS	3RT6016-1AB01	9A 24VAC 50/60Hz	1	YE00601602500									
14	K4	Contactor	SIEMENS	3RT6026-1AC20	25A 24VAC 50/60Hz	1	YE00602602600	(6)								
15		Auxiliary Contactor	SIEMENS	3RH6911-1HA11	1NC+1NO	1	YE00691100100									
16	K5	Contactor	SIEMENS	3RT6016-1AB02	9A 24VAC 50/60Hz	1	YE00601602600	(2)								
17	K6	Contactor	SIEMENS	3RT5046-1AC20	95A 24VAC 50/60Hz	1	YE00504602600	(4)								
18		Auxiliary Contactor	SIEMENS	3RH5921-1CA01	1NC	1	YE00592110100	(4)								
19		Auxiliary Contactor	SIEMENS	3RH5921-1CA10	1NO	1	YE00592110000	(4)New								
20	K7	Middle relay	Honeywell	GR-2C-AC24V	24VAC	1	YE03022400300									
21	K7	Middle relay	Honeywell	GR-4C-AC24V	24VAC	1	YE03042400300	(5)								
22	K8	Safety relay	PILZ	PN0Zx2.8P	24V AC/DC	1	YE04023000000	(4)								
23	K9 K10 K11 K15	Middle relay	Honeywell	GR-2C-AC24V	24VAC	4	YE03022400300	(5)								
24	K12	Middle relay	Honeywell	GR-2C-AC24V	24VAC	1	YE03022400300	(4)								
25	K13	Timer	YUYUN	TRF-N/3M	24VAC	1	YE86032400000	(5)								
Ver.D																
Notes: (1)Means it's not the material inside the control box.(2)Means optional accessories of dedusting motor.(3)Optional accessories of full-receive alarm device.(4)Stand for optional safety relay.(5)Belt conveyor accessories.(6)Large blower power options.																
D		Ver.D		Drawer	Designer	Version	L	Title		Drawing NO.		Scale	Page	D		
								SG-4360H		SG-4360(H)-CE-4.00V-L-10		Standard	Totally	10		
				Proofread by	Approved by	Electrical Components List 1						CE	12	Pages		
Mark		Before modification	Modified by	Modify date	Checked by	Date	20201016		 <b>信易電熱機械股份有限公司</b> <b>Shini Plastics Technologies, Inc.</b>		Voltage	3Φ400V		Frequency		50Hz
1	2	3	4	5	6	7	8									



1		2		3		4		5		6		7		8	
NO.	Symbol	Name	Manufacturer	Type	Specification	Number	Material number	Remark							
51	X2	Terminal board	Honeywell	GK10	10mm <sup>2</sup>	6	YE60001003200								
52		Terminal board	Honeywell	GK10PE	10mm <sup>2</sup> PE	1	YE60001003500								
53	X3	Terminal board	Honeywell	SK2.5	2.5mm <sup>2</sup>	21	YE60002503200								
54			Honeywell	GK2.5PE	2.5mm <sup>2</sup> PE	1	YE60002503400								
55			Honeywell	SK2.5	2.5mm <sup>2</sup>	5	YE60002503200	(2)							
56			Honeywell	GK2.5PE	2.5mm <sup>2</sup> PE	1	YE60002503400	(2)							
57			Honeywell	SK2.5	2.5mm <sup>2</sup>	4	YE60002503200	(3)							
58			Honeywell	SK2.5	2.5mm <sup>2</sup>	2	YE60002503200	(5)							
59			Honeywell	SK2.5	2.5mm <sup>2</sup>	8	YE60002503200	(4)							
60			Honeywell	SK6	6mm <sup>2</sup>	3	YE60000603200	(6)							
61			Honeywell	SK6PE	6mm <sup>2</sup> PE	1	YE60000603500	(6)							
62		Terminal fittings E/GK series	Honeywell	----	PCS	4	YE60000003900								
63	X4	Metal connector	SHINI	PLT-162-RR(Male)	2P	1	YE68016200100	(1)(5)							
64	X10	Metal connector	SHINI	PLT-254-PM	4P	1	YE68025400000	(1)(3)							
65		Metal connector	----	PLT-254-RF	4P	1	YE68025400100	(1)(3)							
66	X11	Heavy-duty plug-in	HARTING	16P+PE(Common socket+Female)	16P	1	YE68001601300	(1)							
67	M1	Granulating motor	----	----	400V 50Hz 37kW	1	----	(1)							
68	M2	Conveying blower	----	----	400V 50Hz 2.2kW	1	----	(1)							
69	M2	Conveying blower	----	----	400V 50Hz 7.5kW	1	----	(1)(6)							
70	M3	Dust-removing blower	----	----	400V 50Hz 1.1kW	1	----	(1)(2)							
Ver.D															
Notes: (1)Means it's not the material inside the control box.(2)Means optional accessories of dedusting motor;(3)Optional accessories of full-receive alarm device;(4)Stand for optional safety relay;(5)Belt conveyor accessories;(6)Large blower power options.		Drawing NO.		Title		Scale		Page 12							
		Electrical Components List 3		SG-4360H		SG-4360(H)-CE-4.00V-L-12		CE		Voltage		Frequency		8	
		20201016		Date		Approved by		Version		L		L		L	
Mark		Before modification		Modified by		Modify date		Checked by		Date		SHINI		SHINI	
		After modification		Modified by		Modify date		Checked by		Date		SHINI		SHINI	
		Proofread by		Proofread by		Approved by		Version		L		SHINI		SHINI	
		Designer		Designer		Approved by		Version		L		SHINI		SHINI	
		Drawer		Drawer		Approved by		Version		L		SHINI		SHINI	
		Title		Title		Approved by		Version		L		SHINI		SHINI	
		Electrical Components List 3		Electrical Components List 3		Approved by		Version		L		SHINI		SHINI	
		SG-4360H		SG-4360H		Approved by		Version		L		SHINI		SHINI	
		SG-4360(H)-CE-4.00V-L-12		SG-4360(H)-CE-4.00V-L-12		Approved by		Version		L		SHINI		SHINI	
		CE		CE		Approved by		Version		L		SHINI		SHINI	
		Voltage		Voltage		Approved by		Version		L		SHINI		SHINI	
		Frequency		Frequency		Approved by		Version		L		SHINI		SHINI	
		3Φ400V		3Φ400V		Approved by		Version		L		SHINI		SHINI	
		50Hz		50Hz		Approved by		Version		L		SHINI		SHINI	
		8		8		Approved by		Version		L		SHINI		SHINI	

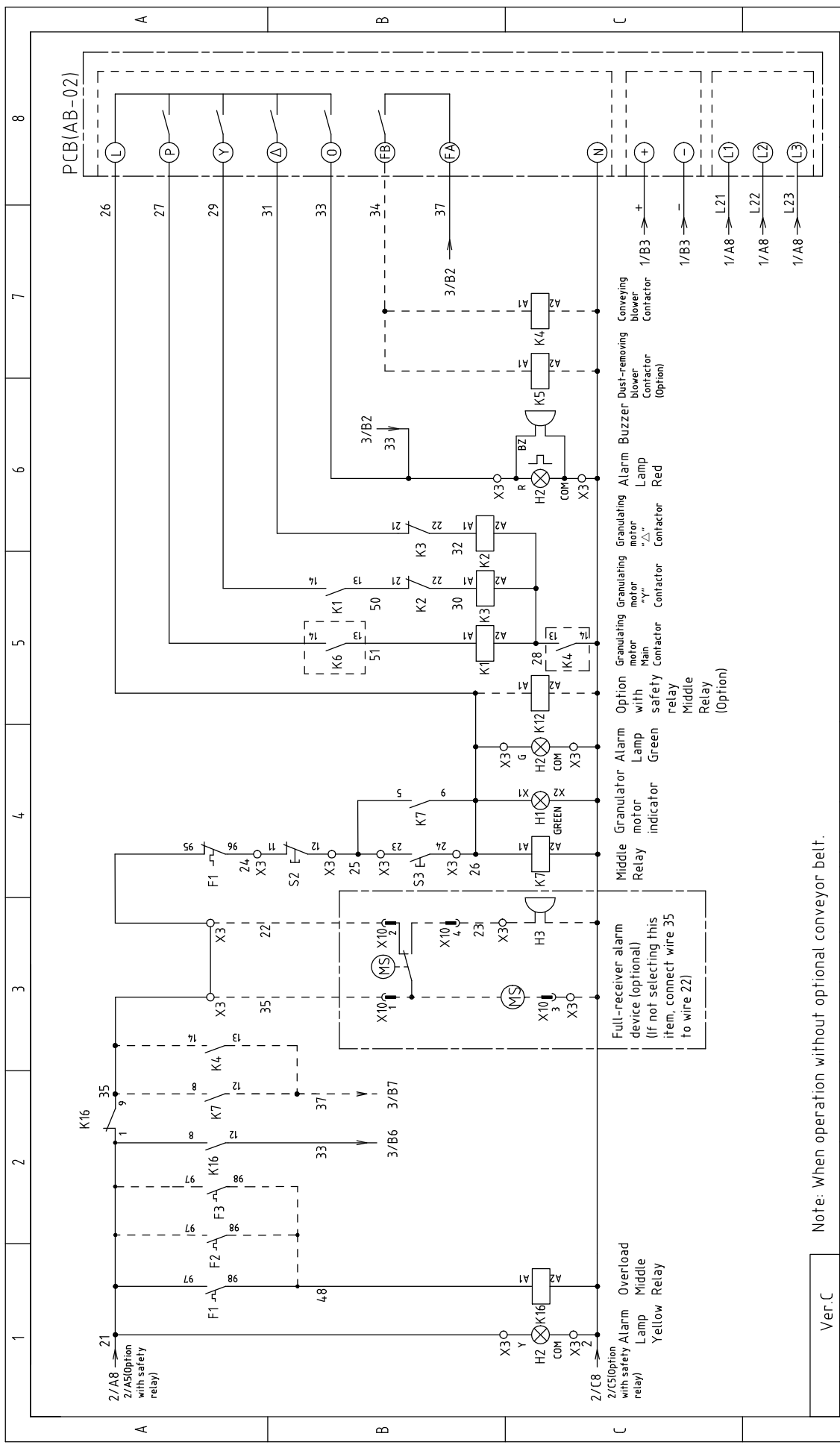






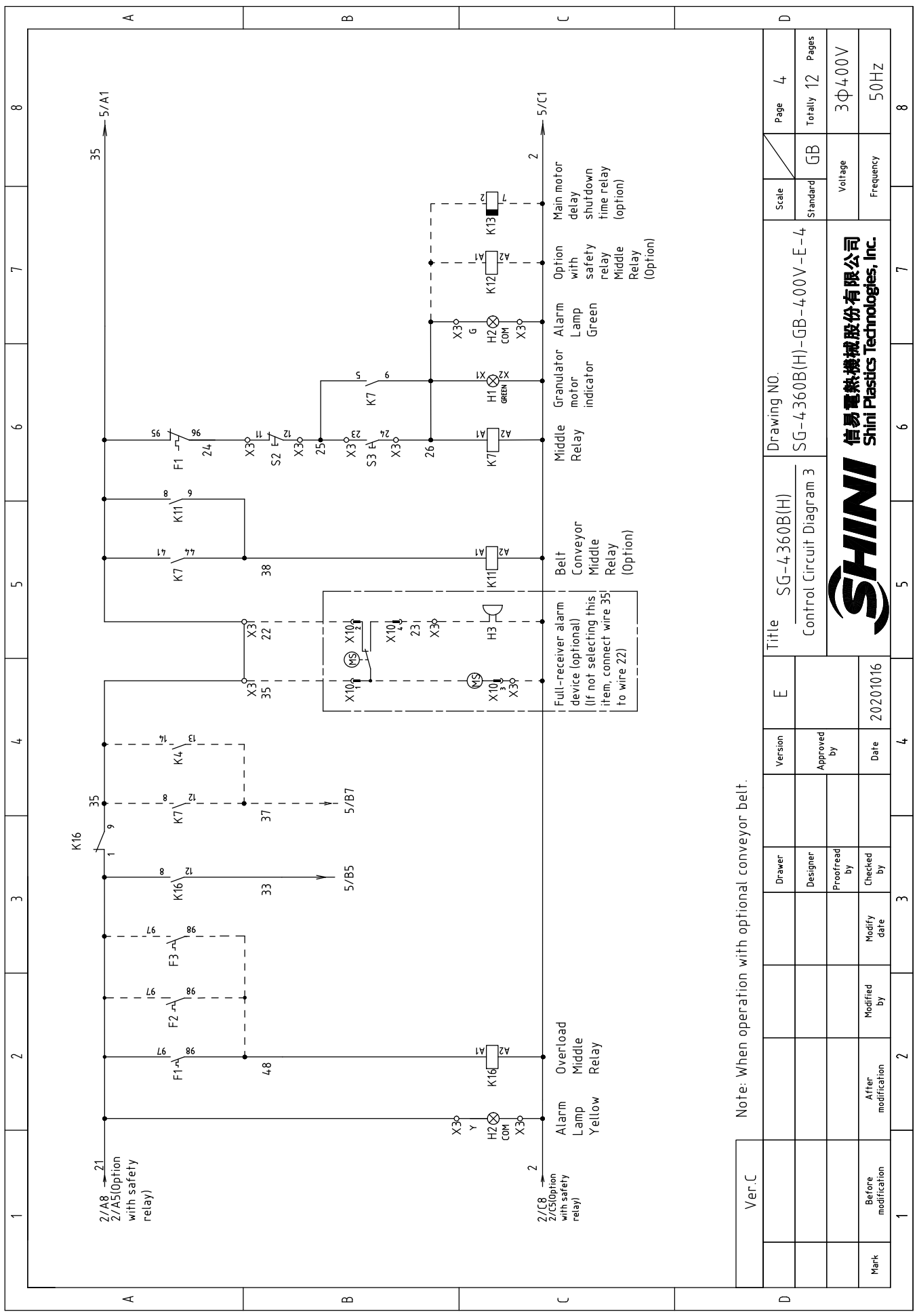
Ver.C	Drawing NO.		Page 2				
	SG-4360B(H)		Totally 12 Pages				
Mark	Control Circuit Diagram 1		GB				
	SG-4360B(H)-GB-400V-E-2		Voltage Frequency				
Before modification	After modification	3Φ400V		50HZ			
1	2	3	4	5	6	7	8





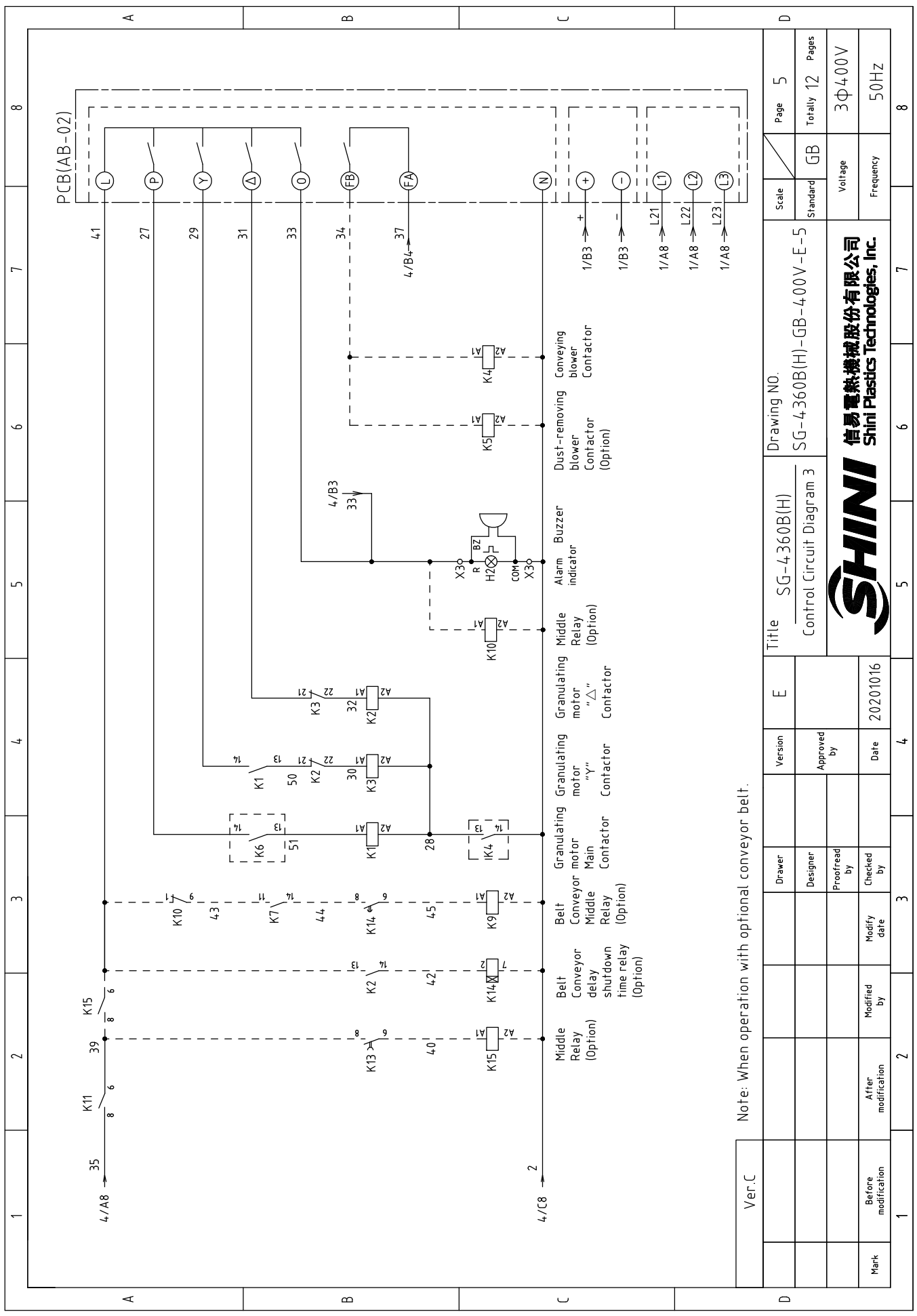
Ver.C	Note: When operation without optional conveyor belt.		
	Scale	Drawing No.	Page 3
Mark	Standard	SG-4360B(H)	Totally 12
	Voltage	3Φ400V	Pages
Before modification	Frequency	50HZ	8
	Modified by	20201016	4
After modification	Checked by	Date	3
Modified by	Approved by	Date	2
Proofread by	Version	Date	1
Designer	Version	Date	1
Drawer	Version	Date	1
Title		Control Circuit Diagram 2	
Title		SG-4360B(H)	
Title		SG-4360B(H)-GB-400V-E-3	





Note: When operation with optional conveyor belt.

Ver.C	E		Version		Title		Drawing No.		Scale	Page
	Designer	Approved by			SG-4360B(H) Control Circuit Diagram 3		SG-4360B(H)-GB-400V-E-4		Standard	Totally
Mark	After modification	Modified by	Checked by	Date	SHINI 信易電熱機械股份有限公司 Shini Plastics Technologies, Inc.		Voltage		Frequency	Pages
1	2	3	4	5	6	7	8	3Φ400V	50HZ	4
								GB		12





1		2		3		4		5		6		7		8	
NO.	Symbol	Name	Manufacturer	Type	Specification	Number	Material number	Remark							
1	Q1	Break Interlock	ABB	A1A125TMF100	100A	1	YE4111020000								
2	Q2	Circuit-breaker	TECO	BM-63C/3P	10A	1	YE40301003000	(6)							
3	Q2	Circuit-breaker	TECO	BM-63C/3P	32A	1	YE40303203000	(7)							
4	Q3	Circuit-breaker	TECO	BM-63C/3P	6A	1	YE40300603000	(2)							
5	Q4	Circuit-breaker	TECO	BM-63C/2003S 2P	3A	1	YE40200203000								
6	Q5	Circuit-breaker	TECO	BM-63C/1010S 1P	10A	1	YE40101000100								
7	K1,K2	Contact	SIEMENS	3RT5035-1AC20	40A 24VAC 50/60Hz	2	YE00503502600								
8		Auxiliary contact	SIEMENS	3RH5921-1CA01	1NC	1	YE00592110100	(4)							
9		Auxiliary Contact	SIEMENS	3RH5921-1CA01	1NC	1	YE00592110100								
10		Auxiliary Contact	SIEMENS	3RH5921-1CA10	1NO	1	YE00592110000	(5)							
11		Auxiliary Contact	SIEMENS	3RH5921-1CA10	1NO	1	YE00592110000	New							
12	K3	Contact	SIEMENS	3RT6028-1AC20	38A 24VAC 50/60Hz	1	YE00602802600								
13	K4	Contact	SIEMENS	3RT6016-1AB01	9A 24VAC 50/60Hz	1	YE00601602500	(6)							
14	K4	Contact	SIEMENS	3RT6026-1AC20	25A 24VAC 50/60Hz	1	YE00602602600	(7)							
15		Auxiliary Contact	SIEMENS	3RH6911-1HA11	1NC+1NO	1	YE00691100100	(6)							
16	K5	Contact	SIEMENS	3RT6016-1AB02	9A 24VAC 50/60Hz	1	YE00601602600	(2)							
17	K6	Contact	SIEMENS	3RT5045-1AC20	80A 24VAC 50/60Hz	1	YE00504502600	(4)							
18		Auxiliary contact	SIEMENS	3RH5921-1CA01	1NC	1	YE00592110100	(4)							
19		Auxiliary contact	SIEMENS	3RH5921-1CA10	1NO	1	YE00592110000	(4)New							
20	K7	Middle relay	Honeywell	GR-2C-AC24V	24VAC	1	YE03022400300								
21	K7	Middle relay	Honeywell	GR-4C-AC24V	24VAC	1	YE03042400300	(5)							
22	K8	Safety relay	PILZ	PN0Z x2.8P	24V AC/DC	1	YE04023000000	(4)							
23	T	Sensor transformer	----	IN=400V/415V OUT=24V	180VA	1	YE70040006700								
24	T	Sensor transformer	----	IN=400V/415V OUT=24V	350VA	1	YE70040009900	(4)New							
25	K9 K10 K11 K15	Middle relay	Honeywell	GR-2C-AC24V	24VAC	4	YE03022400300	(5)							
Ver.C															
Notes: (1)Means it's not the material inside the control box. (2)Means optional accessories of dedusting motor.(3)Optional accessories of full-receive alarm device.(4)Stand for optional safety relay.(5)Bell conveyor accessories. (6) Means accessories for material conveying blower.(7)Large blower power options.															
D		Title		Drawing No.		Scale		Page		Standard		Voltage		Pages	
		SG-4360B		SG-4360B(H)-GB-400V-E-7		GB		7		GB		3Φ400V		12	
		Electrical Components List 1										Frequency		50Hz	
Mark		After modification		Modified by		Date		20201016							
1		2		3		4		5		6		7		8	



**信易電熱機械股份有限公司**  
Shini Plastics Technologies, Inc.



1	2		3	4	5	6	7	8
NO.	Symbol	Name	Manufacturer	Type	Specification	Number	Material number	Remark
51			Honeywell	SK2.5	2.5mm <sup>2</sup>	5	YE60002503200	(2)
52			Honeywell	GK2.5PE	2.5mm <sup>2</sup> PE	1	YE60002503400	(2)
53			Honeywell	SK2.5	2.5mm <sup>2</sup>	4	YE60002503200	(3)
54			Honeywell	SK2.5	2.5mm <sup>2</sup>	2	YE60002503200	(5)
55			Honeywell	SK2.5	2.5mm <sup>2</sup>	8	YE60002503200	(4)
56			Honeywell	SK6	6mm <sup>2</sup>	3	YE60000603200	(7)
57			Honeywell	SK6PE	6mm <sup>2</sup> PE	1	YE60000603500	(7)
58		Terminal fittings E/GK series	Honeywell	----	PCS	4	YE60000003900	
59	X4	Metal connector	SHINI	PLT-162-RR(Male)	2P	1	YE68016200100	(1)(5)
60	X10	Metal connector	SHINI	PLT-254-PM	4P	1	YE68025400000	(1)(3)
61		Metal connector	SHINI	PLT-254-RF	4P	1	YE68025400100	(1)(3)
62	X11	Heavy-duty plug-in	HARTING	16P+PE(Common socket+Female)	16P	1	YE68001601300	(1)
63	PCB	PCB	YUYUN	AB-02	24 VAC	1	YE80022400100	
64		For plastic housing SI-4 T circuit board	----	----	----	1	YR4-0000400100	
65	PA	Ammeter	SFIM	DH-670	100/5A	1	YE25671000000	(1)
66	TA1	Current transformer	RATIO	RQT-10	100/5A	1	YE04100500000	
67	TA2	Current transformer	YUYUN	----	5-100A	1	----	Come with circuit board
68	M1	Granulating motor	----	----	400V 50Hz 30kW	1	----	(1)
69	M2	Conveying blower	----	----	400V 50Hz 3kW	1	----	(1)(6)
70	M2	Conveying blower	----	----	400V 50Hz 7.5kW	1	----	(1)(7)
71	M3	Dust-removing blower	----	----	400V 50Hz 1.1kW	1	----	(1)(2)
<p>Ver.C Notes: (1)Means it's not the material inside the control box. (2)Means optional accessories of dedusting motor.(3)Optional accessories of full-receive alarm device.(4)Stand for optional safety relay.(5)Belt conveyor accessories.  (6) Means accessories for material conveying blower.(7)Large blower power options.</p>								
				Version	E	Drawing NO.		Page 9
				Designer		SG-4360B		Scale
				Proofread by		Electrical Components List 3		Standard
				Checked by		SG-4360B(H)-GB-4.00V-E-9		Totally 12 Pages
				Modify date				Voltage
				After modification				Frequency
				Before modification				3Φ4.00V
								50Hz
1	2		3	4	5	6	7	8



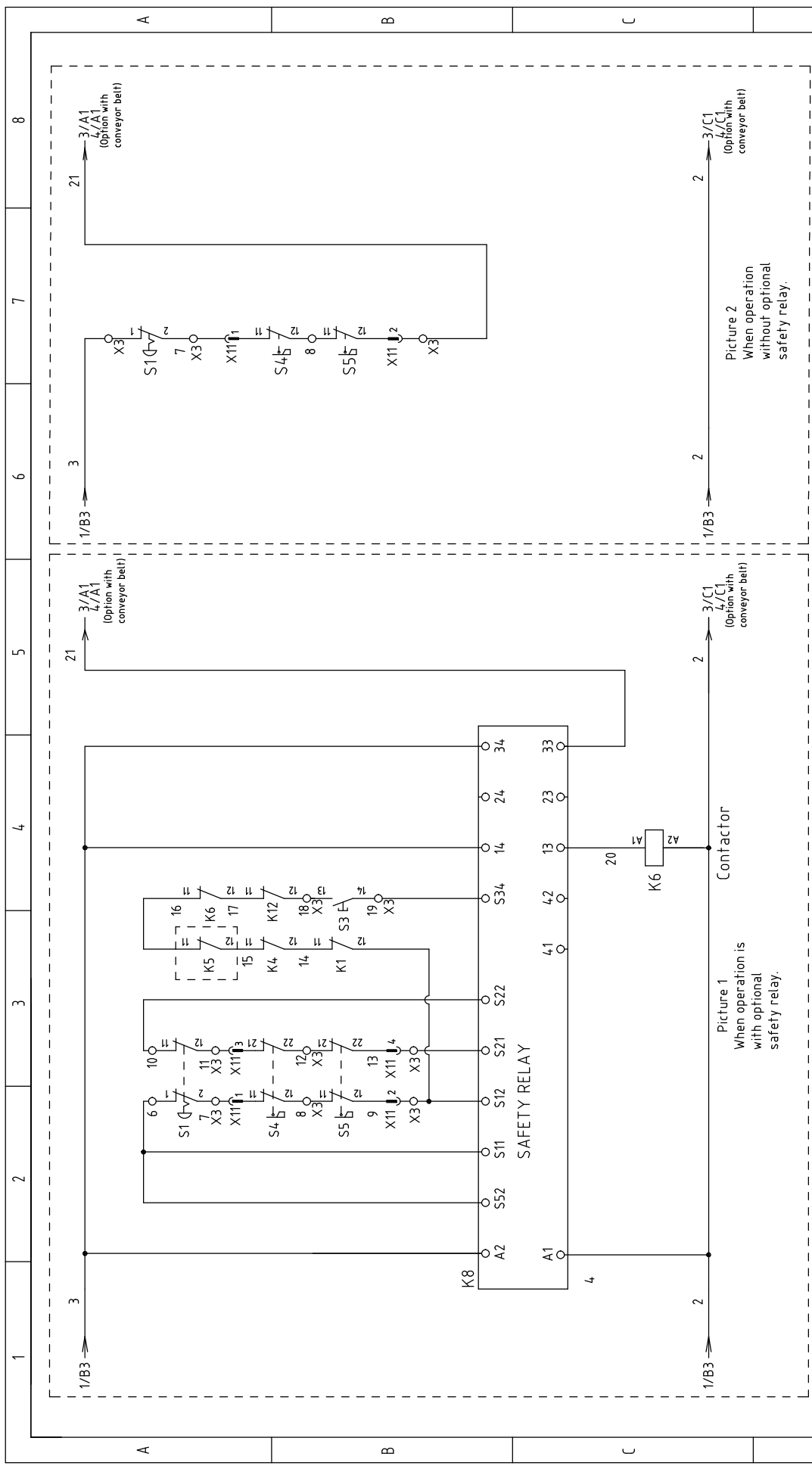
1		2		3		4		5		6		7		8	
NO.	Symbol	Name	Manufacturer	Type	Specification	Number	Material number	Remark							
1	Q1	Break Interlock	ABB	A1A125TMF125	125A	1	YE411614-00000								
2	Q2	Circuit-breaker	TECO	BM-63C/3P	10A	1	YE40301003000	(6)							
3	Q2	Circuit-breaker	TECO	BM-63C/3P	32A	1	YE40303203000	(7)							
4	Q3	Circuit-breaker	TECO	BM-63C/3P	6A	1	YE40300603000	(2)							
5	Q4	Circuit-breaker	TECO	BM-63C/2003S 2P	3A	1	YE40200203000								
6	Q5	Circuit-breaker	TECO	BM-63C/1010S 1P	10A	1	YE40101000100								
7	K1,K2	Contactor	SIEMENS	3RT5036-1AC20	50A 24VAC 50/60Hz	2	YE00503602600								
8		Auxiliary Contactor	SIEMENS	3RH5921-1CA10	1NO	1	YE00592110000	New							
9	K3	Contactor	SIEMENS	3RT5035-1AC20	40A 24VAC 50/60Hz	1	YE00503502600								
10		Auxiliary Contactor	SIEMENS	3RH5921-1CA01	1NC	2	YE00592110100								
11		Auxiliary Contactor	SIEMENS	3RH5921-1CA10	1NO	1	YE00592110000	(5)							
12		Auxiliary Contactor	SIEMENS	3RH5921-1CA01	1NC	1	YE00592110100	(4)							
13	K4	Contactor	SIEMENS	3RT6016-1AB01	9A 24VAC 50/60Hz	1	YE00601602500	(6)							
14	K4	Contactor	SIEMENS	3RT6026-1AC20	25A 24VAC 50/60Hz	1	YE00602602600	(7)							
15		Auxiliary Contactor	SIEMENS	3RH6911-1HA11	1NC+1NO	1	YE00691100100	(6)							
16	K5	Contactor	SIEMENS	3RT6016-1AB02	9A 24VAC 50/60Hz	1	YE00601602600	(2)							
17	K6	Contactor	SIEMENS	3RT5046-1AC20	95A 24VAC 50/60Hz	1	YE00504602600	(4)							
18		Auxiliary Contactor	SIEMENS	3RH5921-1CA01	1NC	1	YE00592110100	(4)							
19		Auxiliary Contactor	SIEMENS	3RH5921-1CA10	1NO	1	YE00592110000	(4)New							
20	K7	Middle relay	Honeywell	GR-2C-AC24V	24VAC	1	YE03022400300								
21	K7	Middle relay	Honeywell	GR-4C-AC24V	24VAC	1	YE03042400300	(5)							
22	K8	Safety relay	PILZ	PN0Zx2.8P	24V AC/DC	1	YE04023000000	(4)							
23	K9 K10 K11 K15	Middle relay	Honeywell	GR-2C-AC24V	24VAC	4	YE03022400300	(5)							
24	K12	Middle relay	Honeywell	GR-2C-AC24V	24VAC	1	YE03022400300	(4)							
25	K13	Timer	YUYUN	TRF-N/3M	24VAC	1	YE86032400000	(5)							
Ver. C Notes: (1)Means it's not the material inside the control box. (2)Means optional accessories of dedusting motor.(3)Optional accessories of full-receive alarm device.(4)Stand for optional safety relay.(5)Belt conveyor accessories. (6) Means accessories for material conveying blower.(7)Large blower power options.															
D		Ver. C		E		Version		Title		Drawing No.		Scale		Page	
				Designer		Approved by		SG-4-360BH		SG-4-360B(H)-GB-400V-E-10		Standard		Page 10	
		Proofread by		Checked by		Date		Electrical Components List 1		GB		Voltage		Totally 12 Pages	
		Modified by		Modify date		20201016				Frequency		3Φ400V		50Hz	
Mark		Before modification		After modification		Date		SHINI		信易電熱機械股份有限公司		Shini Plastics Technologies, Inc.		8	



1		2		3		4		5		6		7		8	
NO.	Symbol	Name	Manufacturer	Type	Specification	Number	Material number	Remark							
51	X2	Terminal board	Honeywell	GK10	10mm <sup>2</sup>	6	YE60001003200								
52		Terminal board	Honeywell	GK10PE	10mm <sup>2</sup> PE	1	YE60001003500								
53	X3	Terminal board	Honeywell	SK2.5	2.5mm <sup>2</sup>	16	YE60002503200								
54			Honeywell	SK2.5	2.5mm <sup>2</sup>	5	YE60002503200	(6)							
55			Honeywell	GK2.5PE	2.5mm <sup>2</sup> PE	1	YE60002503400	(6)/(7)							
56			Honeywell	SK2.5	2.5mm <sup>2</sup>	5	YE60002503200	(2)							
57			Honeywell	GK2.5PE	2.5mm <sup>2</sup> PE	1	YE60002503400	(2)							
58			Honeywell	SK2.5	2.5mm <sup>2</sup>	4	YE60002503200	(3)							
59			Honeywell	SK2.5	2.5mm <sup>2</sup>	2	YE60002503200	(5)							
60			Honeywell	SK2.5	2.5mm <sup>2</sup>	8	YE60002503200	(4)							
61			Honeywell	SK6	6mm <sup>2</sup>	3	YE60000603200	(7)							
62			Honeywell	SK6PE	6mm <sup>2</sup> PE	1	YE60000603500	(7)							
63		Terminal fittings E/GK series	Honeywell	----	PCS	4	YE60000003900								
64	X4	Metal connector	SHINI	PLT-162-RR(Male)	2P	1	YE68016200100	(1)(5)							
65	X10	Metal connector	SHINI	PLT-254-PM	4P	1	YE68025400000	(1)(3)							
66		Metal connector	----	PLT-254-RF	4P	1	YE68025400100	(1)(3)							
67	X11	Heavy-duty plug-in	HARTING	16P+PE(Common socket+Female)	16P	1	YE68001601300	(1)							
68	M1	Granulating motor	SIEMENS	----	4.00V 50Hz 37kW	1	----	(1)							
69	M2	Conveying blower	----	----	4.00V 50Hz 3kW	1	----	(1)(6)							
70	M2	Conveying blower	----	----	4.00V 50Hz 7.5kW	1	----	(1)(7)							
71	M3	Dust-removing blower	----	----	4.00V 50Hz 1.1kW	1	----	(1)(2)							
Notes: (1)Means it's not the material inside the control box. (2)Means optional accessories of dedusting motor.(3)Optional accessories of full-receive alarm device.(4)Stand for optional safety relay.(5)Belt conveyor accessories. (6) Means accessories for material conveying blower.(7) Large blower power options.															
Ver.C				Title		Drawing No.		Scale		Page 12					
				SG-4-360BH		SG-4-360B(H)-GB-400V-E-12		Standard		GB		Totally 12		Pages	
				Electrical Components List 3								Voltage		3Φ400V	
				Date		20201016						Frequency		50Hz	
Mark		Before modification		Modified by		Modified date		Checked by		Proofread by		Designer		Drawer	
1		2		3		4		5		6		7		8	







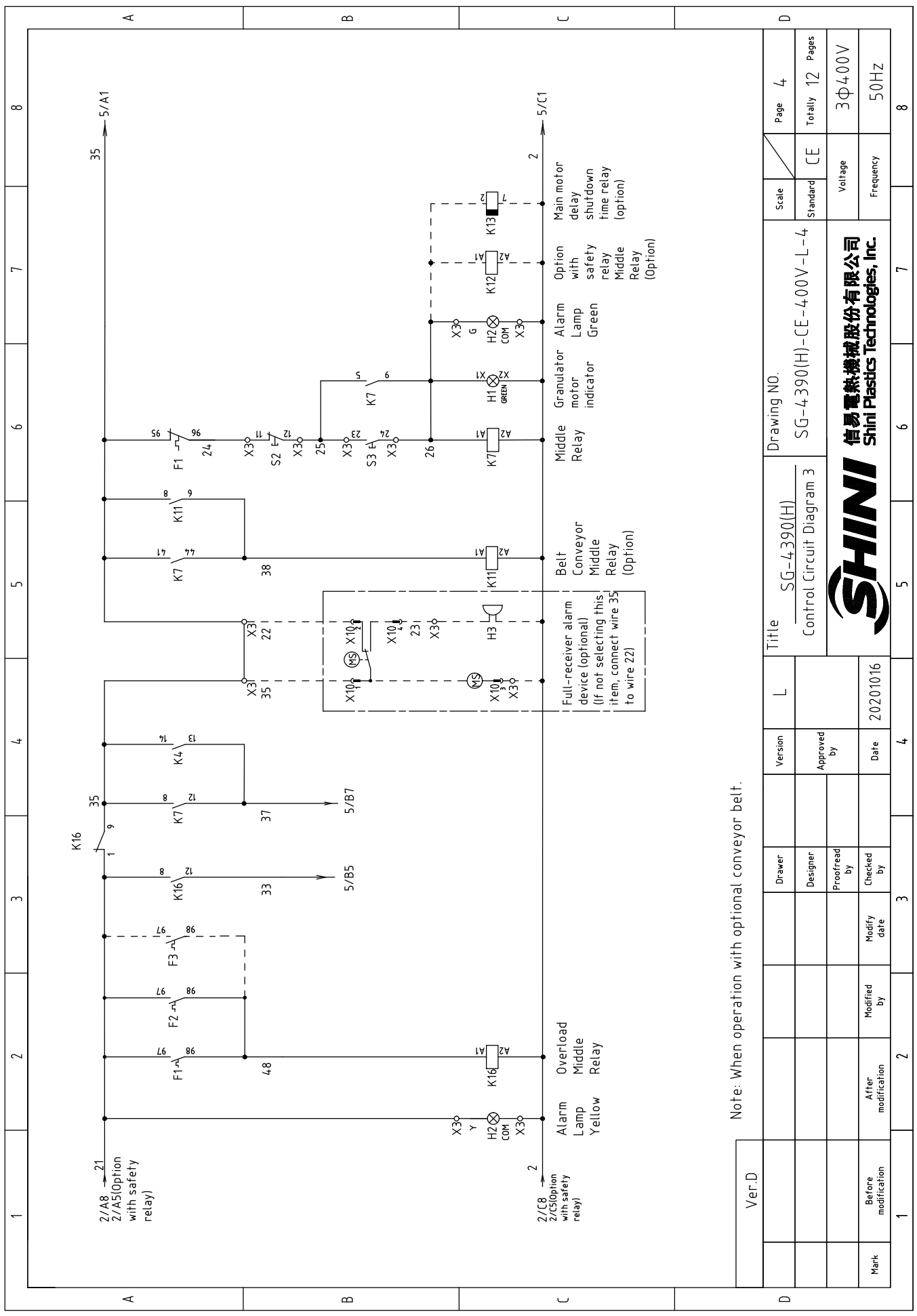
Picture 1  
When operation is  
with optional  
safety relay.

Picture 2  
When operation  
without optional  
safety relay.

Ver.D	Drawing NO.		Page 2	
	SG-4390(H) Control Circuit Diagram 1		Standard	CE
Title		SG-4390(H)-CE-400V-L-2		Totally 12 Pages
Version		20201016		3Φ400V
Approved by		Date		50HZ
Checked by		Date		
Modified by		Date		
After modification		Date		
Before modification		Date		
Mark		Date		





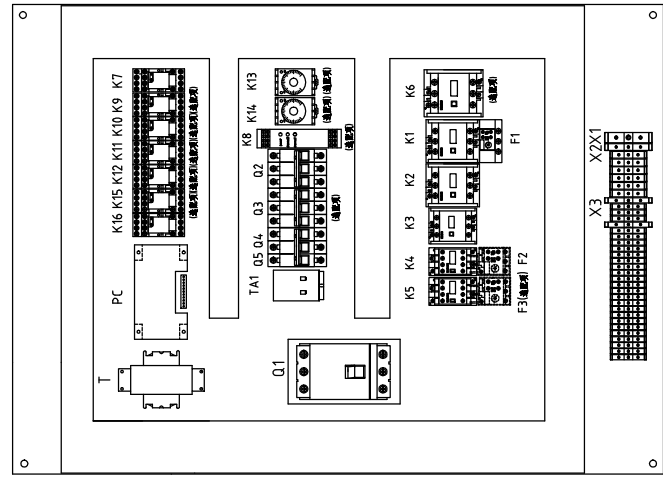
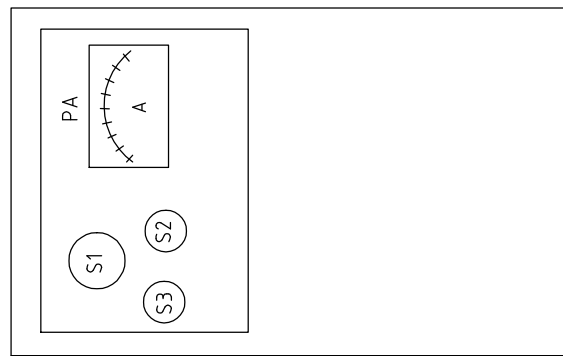
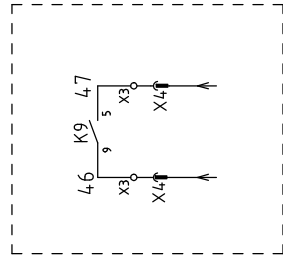


Note: When operation with optional conveyor belt.

Ver.D	Drawing No.		Scale	Page
	SG-4390(H)		Standard	4
Title		Control Circuit Diagram 3		Totally
L		SG-4390(H)-CE-400V-L-4		12
Mark	Before modification	After modification	Voltage	3Φ400V
1	2	3	Frequency	50HZ
2	4	5	SHINI 信易電熱機械股份有限公司 Shini Plastics Technologies, Inc.	
3	6	7	SHINI logo	
4	8	Date		
5	20201016		Date	
6	Approved by		Date	
7	Designer		Date	
8	Proofread by		Date	
Checked by		Date		4



Control contact wiring diagram in collocation with belt conveyor

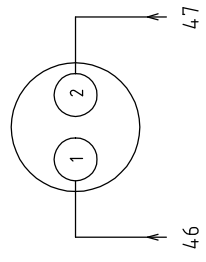


X11: 16P Heavy-duty plug-in

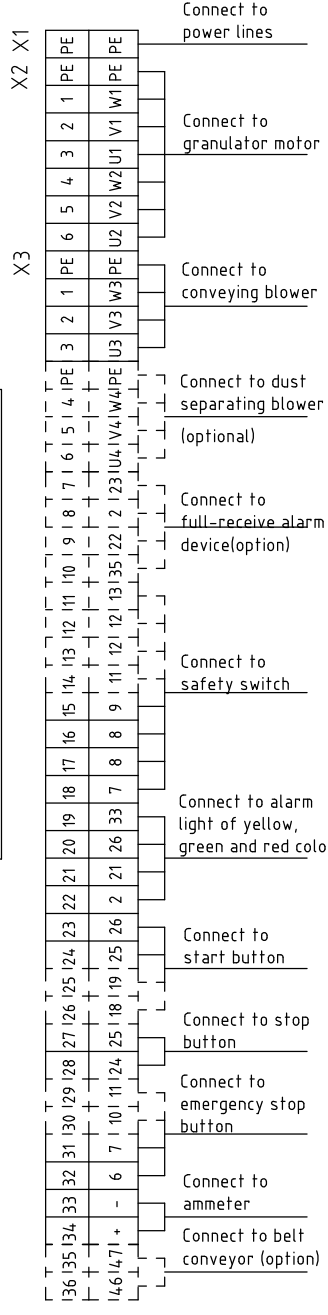
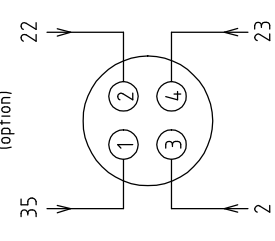
①	⑦	⑬
②	⑧	⑭
③	⑨	⑮
④	⑩	⑯
⑤	⑪	
⑥	⑫	
⑦	⑬	
⑧	⑭	

Note: When the safety relay is not opted, change the terminal 9 to 21, and don't connect the terminal 11 and 13.

X4 Connection diagram of metal connectors  
Connect to belt conveyor (option)



X10 Connection diagram of metal connectors  
Connect to full-receive alarm device (option)



Ver.D	Notes: Change terminal No. 6 to 3, and No. 9 to 21 without optional safety relay.			Drawing No. SG-4390(H) Electrical Components Layout		Scale Standard		Page 6	
	Drawer	Designer	Proofread by	Checked by	Approved by	SG-4390(H)-CE-400V-L-6		Totally 12 Pages	
Mark	Before modification	After modification	Modified by	Modify date	Date	Voltage 3Φ400V		Frequency 50HZ	
1	2	3	4	5	6	7	8	SHINI 信易電熱機械股份有限公司 Shini Plastics Technologies, Inc.	

1		2		3		4		5		6		7		8	
NO.	Symbol	Name	Manufacturer	Type	Specification	Number	Material number	Remark							
1	Q1	Break Interlock	ABB	A1A125TMF125	125A	1	YE41161400000								
2	Q2	Circuit-breaker	TECO	BM-63C/3P	10A	1	YE40301003000								
3	Q2	Circuit-breaker	TECO	BM-63C/3P	32A	1	YE40303203000	(6)							
4	Q3	Circuit-breaker	TECO	BM-63C/3P	6A	1	YE40300603000	(2)							
5	Q4	Circuit-breaker	TECO	BM-63C/2003S 2P	3A	1	YE40200203000								
6	Q5	Circuit-breaker	TECO	BM-63C/1010S 1P	10A	1	YE40101000100								
7	K1,K2	Contactor	SIEMENS	3RT5036-1AC20	50A 24VAC 50/60Hz	2	YE00503602600								
8		Auxiliary contactor	SIEMENS	3RH5921-1CA10	1NO	1	YE00592110000	New							
9	K3	Contactor	SIEMENS	3RT5035-1AC20	40A 24VAC 50/60Hz	1	YE00503502600								
10		Auxiliary Contactor	SIEMENS	3RH5921-1CA01	1NC	2	YE00592110100								
11		Auxiliary Contactor	SIEMENS	3RH5921-1CA10	1NO	1	YE00592110000	(5)							
12		Auxiliary Contactor	SIEMENS	3RH5921-1CA01	1NC	1	YE00592110100	(4)							
13	K4	Contactor	SIEMENS	3RT6016-1AB01	9A 24VAC 50/60Hz	1	YE00601602500								
14	K4	Contactor	SIEMENS	3RT6026-1AB01	25A 24VAC 50/60Hz	1	YE00602602600	(6)							
15		Auxiliary Contactor	SIEMENS	3RH6911-1HA11	1NC+1NO	1	YE00691100100								
16	K5	Contactor	SIEMENS	3RT6016-1AB02	9A 24VAC 50/60Hz	1	YE00601602600	(2)							
17	K6	Contactor	SIEMENS	3RT5046-1AC20	95A 24VAC 50/60Hz	1	YE00504602600	(4)							
18		Auxiliary contactor	SIEMENS	3RH5921-1CA01	1NC	1	YE00592110100	(4)							
19		Auxiliary contactor	SIEMENS	3RH5921-1CA10	1NO	1	YE00592110000	(4)New							
20	K7	Middle relay	Honeywell	GR-2C-AC24V	24VAC	1	YE03022400300								
21	K7	Middle relay	Honeywell	GR-4C-AC24V	24VAC	1	YE03042400300	(5)							
22	K8	Safety relay	PILZ	PN0Zx2.8P	24V AC/DC	1	YE04023000000	(4)							
23	K9 K10 K11 K15	Middle relay	Honeywell	GR-2C-AC24V	24VAC	4	YE03022400300	(5)							
24	K12	Middle relay	Honeywell	GR-2C-AC24V	24VAC	1	YE03022400300	(4)							
25	K13	Timer	YUYUN	TRF-N/3M	24VAC	1	YE86032400000	(5)							
Ver.D															
Notes: (1)Means it's not the material inside the control box.(2)Means optional accessories of decoupling motor.(3)Optional accessories of full-receive alarm device.(4)Stand for optional safety relay.(5)Belt conveyor accessories.(6)Large blower power options.															
D		Ver.D		Title		Drawing NO.		Scale		Page		7		8	
				SG-4390		SG-4390(H)-CE-400V-L-7		Standard		CE		Totally		12 Pages	
				Electrical Components List 1								Voltage		3Φ400V	
Mark		Before modification		Modified by		Date						Frequency		50Hz	
1		2		3		4		5		6		7		8	



**信易電熱機械股份有限公司**  
Shini Plastics Technologies, Inc.



1		2		3		4		5		6		7		8	
NO.	Symbol	Name	Manufacturer	Type	Specification	Number	Material number	Remark							
51	X1	Terminal board	Honeywell	GK16PE	16mm <sup>2</sup> PE	1	YE60001603500								
52	X2	Terminal board	Honeywell	GK10	10mm <sup>2</sup>	6	YE60001003200								
53	X3	Terminal board	Honeywell	GK10PE	10mm <sup>2</sup> PE	1	YE60001003500								
54		Terminal board	Honeywell	SK2.5	2.5mm <sup>2</sup>	21	YE60002503200								
55			Honeywell	GK2.5PE	2.5mm <sup>2</sup> PE	1	YE60002503400								
56			Honeywell	SK2.5	2.5mm <sup>2</sup>	5	YE60002503200	(2)							
57			Honeywell	GK2.5PE	2.5mm <sup>2</sup> PE	1	YE60002503400	(2)							
58			Honeywell	SK2.5	2.5mm <sup>2</sup>	4	YE60002503200	(3)							
59			Honeywell	SK2.5	2.5mm <sup>2</sup>	2	YE60002503200	(5)							
60			Honeywell	SK2.5	2.5mm <sup>2</sup>	8	YE60002503200	(4)							
61			Honeywell	SK6	6mm <sup>2</sup>	3	YE60000603200	(6)							
62			Honeywell	SK6PE	6mm <sup>2</sup> PE	1	YE60000603500	(6)							
63		Terminal fittings E/GK series	Honeywell	----	PCS	4	YE60000003900								
64	X4	Metal connector	SHINI	PLT-162-RR(Male)	2P	1	YE68016200100	(1)(5)							
65	X10	Metal connector	SHINI	PLT-254-PM	4P	1	YE68025400000	(1)(3)							
66		Metal connector	----	PLT-254-RF	4P	1	YE68025400100	(1)(3)							
67	X11	Heavy-duty plug-in	HARTING	16P+PE(Common socket+Female)	16P	1	YE68001601300	(1)							
68	M1	Granulating motor	----	----	400V 50Hz 37kW	1	----	(1)							
69	M2	Conveying blower	----	----	400V 50Hz 2.2kW	1	----	(1)							
70	M2	Conveying blower	----	----	400V 50Hz 7.5kW	1	----	(1)(6)							
71	M3	Dust-removing blower	----	----	400V 50Hz 1.1kW	1	----	(1)(2)							
<p>Notes: (1)Means it's not the material inside the control box.(2)Means optional accessories of dedusting motor;(3)Optional accessories of full-reverse alarm device;(4)Stand for optional safety relay;(5)Beit conveyor accessories;(6)Large blower power options.</p>															
Ver.D				Drawer	Version	L	Title		Drawing NO.		Scale	Page 9		D	
				Designer	Approved by		SG-4390		SG-4390(H)-CE-400V-L-9		Standard	CE		Totally 12 Pages	
				Proofread by	Date		Electrical Components List 3					Voltage		3Φ400V	
Mark		Before modification	Modified by	Modify date		20201016						Frequency		50Hz	
1	2	3	4	5	6	7	8								




信易電熱機械股份有限公司  
Shini Plastics Technologies, Inc.

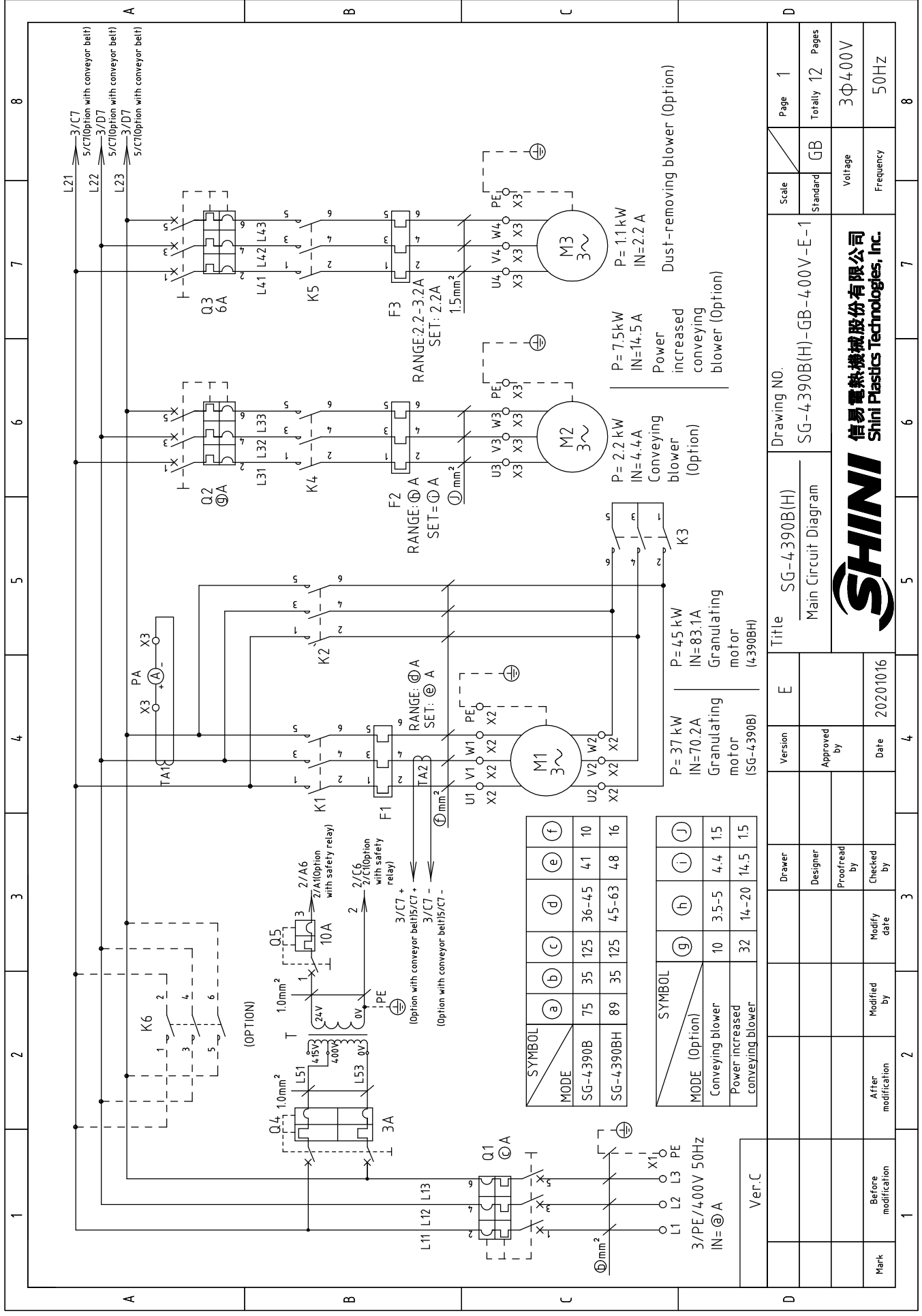
1		2		3		4		5		6		7		8	
NO.	Symbol	Name	Manufacturer	Type	Specification	Number	Material number	Remark							
1	Q1	Break Interlock	ABB	A2B250TMF160	160A	1	YE41161500000								
2	Q2	Circuit-breaker	TECO	BM-63C/3P	10A	1	YE40301003000								
3	Q2	Circuit-breaker	TECO	BM-63C/3P	32A	1	YE40303203000	(6)							
4	Q3	Circuit-breaker	TECO	BM-63C/3P	6A	1	YE40300603000	(2)							
5	Q4	Circuit-breaker	TECO	BM-63C/2003S 2P	3A	1	YE40200203000								
6	Q5	Circuit-breaker	TECO	BM-63C/1010S 1P	10A	1	YE40101000100								
7	K1,K2	Contactor	SIEMENS	3RT5044-1AC20	65A 24VAC 50/60Hz	2	YE00504402600								
8		Auxiliary Contactor	SIEMENS	3RH5921-1CA10	1N0	1	YE00592110000	New							
9	K3	Contactor	SIEMENS	3RT5036-1AC20	50A 24VAC 50/60Hz	1	YE00503602600								
10		Auxiliary Contactor	SIEMENS	3RH5921-1CA01	1NC	2	YE00592110100								
11		Auxiliary Contactor	SIEMENS	3RH5921-1CA10	1N0	1	YE00592110000	(5)							
12	K4	Contactor	SIEMENS	3RT6016-1AB01	9A 24VAC 50/60Hz	1	YE00601602500								
13	K4	Contactor	SIEMENS	3RT6026-1AC20	25A 24VAC 50/60Hz	1	YE00602602600	(6)							
14		Auxiliary Contactor	SIEMENS	3RH6911-1HA11	1NC+1N0	1	YE00691100100								
15	K5	Contactor	SIEMENS	3RT6016-1AB02	9A 24VAC 50/60Hz	1	YE00601602600	(2)							
16	K6	Contactor	SIEMENS	3RT5054-1AB36	115A 24V 50/60Hz	1	YE00505400900	(4)							
17		Auxiliary Contactor	SIEMENS	3RH5921-1CA01	1NC	1	YE00592110100	(4)							
18		Auxiliary Contactor	SIEMENS	3RH5921-1CA10	1N0	1	YE00592110000	(4)New							
19	K7	Middle relay	Honeywell	GR-2C-AC24V	24VAC	1	YE03022400300								
20	K7	Middle relay	Honeywell	GR-4C-AC24V	24VAC	1	YE03042400300	(5)							
21	K8	Safety relay	PILZ	PNOZx2.8P	24V AC/DC	1	YE04023000000	(4)							
22	K9 K10 K11 K15	Middle relay	Honeywell	GR-2C-AC24V	24VAC	4	YE03022400300	(5)							
23	K12	Middle relay	Honeywell	GR-2C-AC24V	24VAC	1	YE03022400300	(4)							
24	K13	Timer	YUYUN	TRF-N/3M	24VAC	1	YE86032400000	(5)							
25	K14	Timer	YUYUN	TH3A-NAB 60S	24VAC	1	YE86602400300	(5)							
Ver.D															
Notes: (1)Means it's not the material inside the control box.(2)Means optional accessories of dedusting motor.(3)Optional accessories of full-receive alarm device.(4)SI and for optional safety relay.(5)Belt conveyor accessories.(6)Large blower power options.		Drawing NO.		Title		Scale		Page		Standard		Voltage		Frequency	
		L		SG-4390H		SG-4390(H)-CE-4.00V-L-10		CE		Totally 12		3Φ4.00V		50Hz	
		Approved by		Electrical Components List 1											
		Date		20201016											
Mark		Before modification		Modified by		Modify date		Checked by		Proofread by		Designer		Drawer	
1		2		3		4		5		6		7		8	



1		2		3		4		5		6		7		8	
NO.	Symbol	Name	Manufacturer	Type	Specification	Number	Material number	Remark							
26	F1	Overload relay	SIEMENS	3RU5146-4JB0	45-63A	1	YE01514640000								
27	F2	Overload relay	SIEMENS	3RU6126-4BB0	14-20A	1	YE01260140000	(6)							
28	F2	Overload relay	SIEMENS	3RU6116-1FB0	3.5-5A	1	YE01160350000	New							
29	F3	Overload relay	SIEMENS	3RU6116-1DB0	2.2-3.2A	1	YE01160220000	(2) New							
30	K16	Middle relay	Honeywell	GR-2C-AC24V	24VAC	1	YE03022400300								
31	S1	Emergency stop button	SCHNEIDER	XB2BS542C	400VAC	1	YE11254200000	(1)							
32		Contact block	SCHNEIDER	ZB2BE102C	1NC	1	YE00210203100	(1)(4)							
33	S2	Stop button	SCHNEIDER	XB2BA22C	400VAC	1	YE11222000000	(1)							
34	S3,H1	Start button (with light)	SCHNEIDER	XB2BW33B1C	24VAC	1	YE11233100000	(1)							
35		Contact block	SCHNEIDER	ZB2BE101C	1NO	1	YE00210103100	(1)(4)							
36	S4,S5	Safety switch	SCHMERSRC	AZ15-02ZVRK-14.76	230VAC	2	YE1614-7600100	(1)							
37	S4,S5	Safety switch	SCHMERSRC	AZ16-02ZVRK-14.76	230VAC	2	YE1614-7600000	(1)(4)							
38	H2	3-color alarm lamp	SHINI	Red, green, yellow lights + buzzer	24VAC/DC 50/60Hz	1	BL90002401520	(1)							
39	H3	Buzzer	TEND	EA-2	24VAC	1	YE84240200000	(1)(3)							
40	MS	Material level motor	SHINI	SR-80	24VAC	1	YE15802400100	(1)(3)							
41	T	Sensor transformer	----	IN=400V/415V OUT=24V	350VA	1	YE700400009900								
42	TA1	Current transformer	RATIO	RCT-35	150/5A	1	YE04150500000								
43	PA	Ammeter	SFIM	DH-670	150/5A	1	YE25671500000	(1)							
44	PCB	PCB	JIUXIN	AB-02	24VAC	1	YE80022400100								
45		For plastic housing SI-4T circuit board	----	----	----	1	YR40000400100	Come with circuit board							
46	TA2	Current transformer	YUYUN	----	5-100A	1	----								
47	X1	Terminal board	Honeywell	GK16PE	16mm <sup>2</sup> PE	1	YE60001603500								
48	X2	Terminal board	Honeywell	GK16	16mm <sup>2</sup>	6	YE60001603200								
49		Terminal board	Honeywell	GK16PE	16mm <sup>2</sup> PE	1	YE60001603500								
50	X3	Terminal board	Honeywell	SK2.5	2.5mm <sup>2</sup>	21	YE60002503200								
Notes: (1)Means it's not the material inside the control box.(2)Means optional accessories of reducing motor;(3)Optional accessories of full-receive alarm device;(4)Stand for optional safety relay;(5)Belt conveyor accessories;(6)Large blower power options.															
Ver.D				Title		SG-4-390H		Drawing NO.		Scale		Page		11	
				Electrical Components List 2		SG-4-390(H)-CE-400V-L-11		Standard		CE		Totally		12	
				Date		20201016		Voltage		3Φ400V		Frequency		50Hz	
Mark		Before modification		Modified by		Modified date		Checked by		Proofread by		Designer		Drawer	
1		2		3		4		5		6		7		8	



1		2		3		4		5		6		7		8	
NO.	Symbol	Name	Manufacturer	Type	Specification	Number	Material number	Remark							
51			Honeywell	GK2.5PE	2.5mm <sup>2</sup> PE	1	YE60002503400								
52			Honeywell	SK2.5	2.5mm <sup>2</sup>	5	YE60002503200	(2)							
53			Honeywell	GK2.5PE	2.5mm <sup>2</sup> PE	1	YE60002503400	(2)							
54			Honeywell	SK2.5	2.5mm <sup>2</sup>	4	YE60002503200	(3)							
55			Honeywell	SK2.5	2.5mm <sup>2</sup>	2	YE60002503200	(5)							
56			Honeywell	SK2.5	2.5mm <sup>2</sup>	8	YE60002503200	(4)							
57			Honeywell	SK6	6mm <sup>2</sup>	3	YE60000603200	(6)							
58			Honeywell	SK6PE	6mm <sup>2</sup> PE	1	YE60000603500	(6)							
59		Terminal fittings E/GK series	Honeywell	----	PCS	4	YE60000003900								
60	X4	Metal connector	SHINI	PLT-162-RR(Male)	2P	1	YE68016200100	(1)(5)							
61	X10	Metal connector	SHINI	PLT-254-PM	4P	1	YE68025400000	(1)(3)							
62		Metal connector	----	PLT-254-RF	4P	1	YE68025400100	(1)(3)							
63	X11	Heavy-duty plug-in	HARTING	16P+PE(Common socket+Female)	16P	1	YE68001601300	(1)							
64	M1	Granulating motor	----	----	400V 50Hz 4.5kW	1	----	(1)							
65	M2	Conveying blower	----	----	400V 50Hz 2.2kW	1	----	(1)							
66	M2	Conveying blower	----	----	400V 50Hz 7.5kW	1	----	(1)(6)							
67	M3	Dust-removing blower	----	----	400V 50Hz 1.1kW	1	----	(1)(2)							
C															
D															
Ver.D Notes: (1)Means it's not the material inside the control box.(2)Means optional accessories of decusting motor.(3)Optional accessories of full-receive alarm device.(4)Stand for optional safety relay.(5)Belt conveyor accessories.(6)Large blower power options.															
Ver.D		Title		Drawing NO.		Scale		Page		Standard		Totally		Pages	
		SG-4390H		SG-4390(H)-CE-4.00V-L-12		CE		12		CE		12		12	
Electrical Components List 3															
Electrical Components List 3															
SHINI															
信易電熱機械股份有限公司		Shini Plastics Technologies, Inc.													
Mark		Before modification		Modified by		Modify date		Checked by		Date		Voltage		Frequency	
1		2		3		4		5		6		7		8	
		20201016						3Φ4.00V		50Hz					



Ver.C

Mark	Before modification	Modified by	Modify date	Checked by	Date
					20201016

Designer	Proofread by	Approved by	Version	E
			SG-4390B(H)	

Scale	Standard	GB	Page 1
			Totally 12 Pages

Voltage	3Φ400V
Frequency	50Hz

Title	SG-4390B(H)
Main Circuit Diagram	

SYMBOL	(a)	(b)	(c)	(d)	(e)	(f)
MODE	75	35	125	36-45	41	10

SYMBOL	(g)	(h)	(i)	(j)
MODE	10	3.5-5	4.4	1.5

SYMBOL	(k)	(l)	(m)
MODE	32	14-20	14.5

3/PE/400V 50Hz	IN=⊕A
3/PE/400V 50Hz	IN=⊕A

3/PE/400V 50Hz	IN=⊕A
3/PE/400V 50Hz	IN=⊕A

3/PE/400V 50Hz	IN=⊕A
3/PE/400V 50Hz	IN=⊕A

3/PE/400V 50Hz	IN=⊕A
3/PE/400V 50Hz	IN=⊕A

3/PE/400V 50Hz	IN=⊕A
3/PE/400V 50Hz	IN=⊕A

3/PE/400V 50Hz	IN=⊕A
3/PE/400V 50Hz	IN=⊕A

3/PE/400V 50Hz	IN=⊕A
3/PE/400V 50Hz	IN=⊕A

3/PE/400V 50Hz	IN=⊕A
3/PE/400V 50Hz	IN=⊕A

3/PE/400V 50Hz	IN=⊕A
3/PE/400V 50Hz	IN=⊕A

3/PE/400V 50Hz	IN=⊕A
3/PE/400V 50Hz	IN=⊕A

3/PE/400V 50Hz	IN=⊕A
3/PE/400V 50Hz	IN=⊕A

3/PE/400V 50Hz	IN=⊕A
3/PE/400V 50Hz	IN=⊕A

3/PE/400V 50Hz	IN=⊕A
3/PE/400V 50Hz	IN=⊕A

3/PE/400V 50Hz	IN=⊕A
3/PE/400V 50Hz	IN=⊕A

3/PE/400V 50Hz	IN=⊕A
3/PE/400V 50Hz	IN=⊕A

3/PE/400V 50Hz	IN=⊕A
3/PE/400V 50Hz	IN=⊕A



SG-4390B(H)-GB-400V-E-1

Power increased conveying blower (Option)

Conveying blower (Option)

Granulating motor (SG-4390B)

Granulating motor (4390BH)

Dust-removing blower (Option)

Power increased conveying blower (Option)

Conveying blower (Option)

Granulating motor (SG-4390B)

Granulating motor (4390BH)

Dust-removing blower (Option)

Power increased conveying blower (Option)

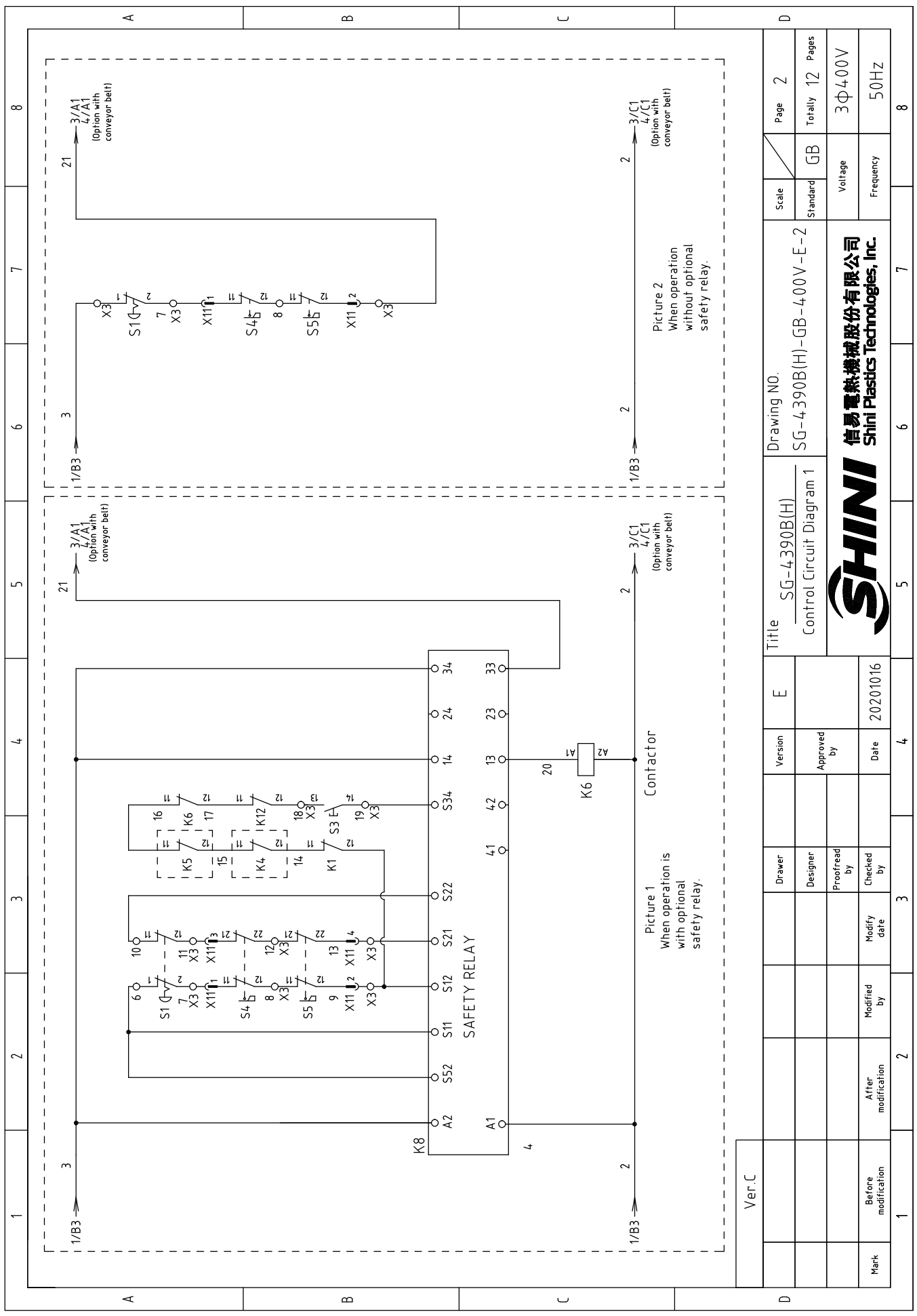
Conveying blower (Option)

Granulating motor (SG-4390B)

Granulating motor (4390BH)

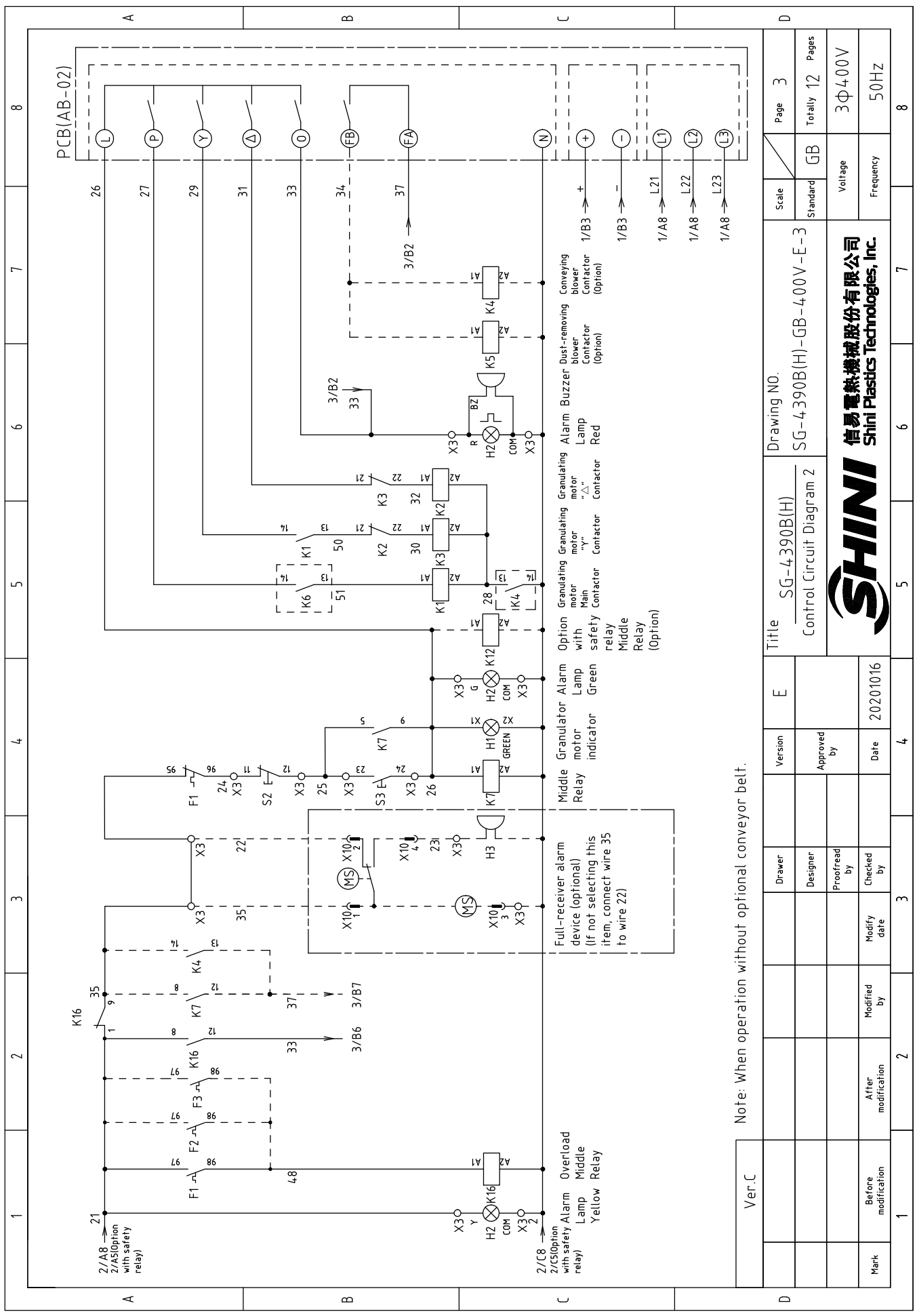
Dust-removing blower (Option)

Power increased conveying blower (Option)



Mark	Before modification	Modified by	Modify date	Checked by	Date	Proofread by	Designer	Drawer	Version	Approved by	E	Title	Drawing NO.	Scale	Page
	After modification	2	3											4	3
														GB	12
															3Φ4.00V
															50HZ
															8

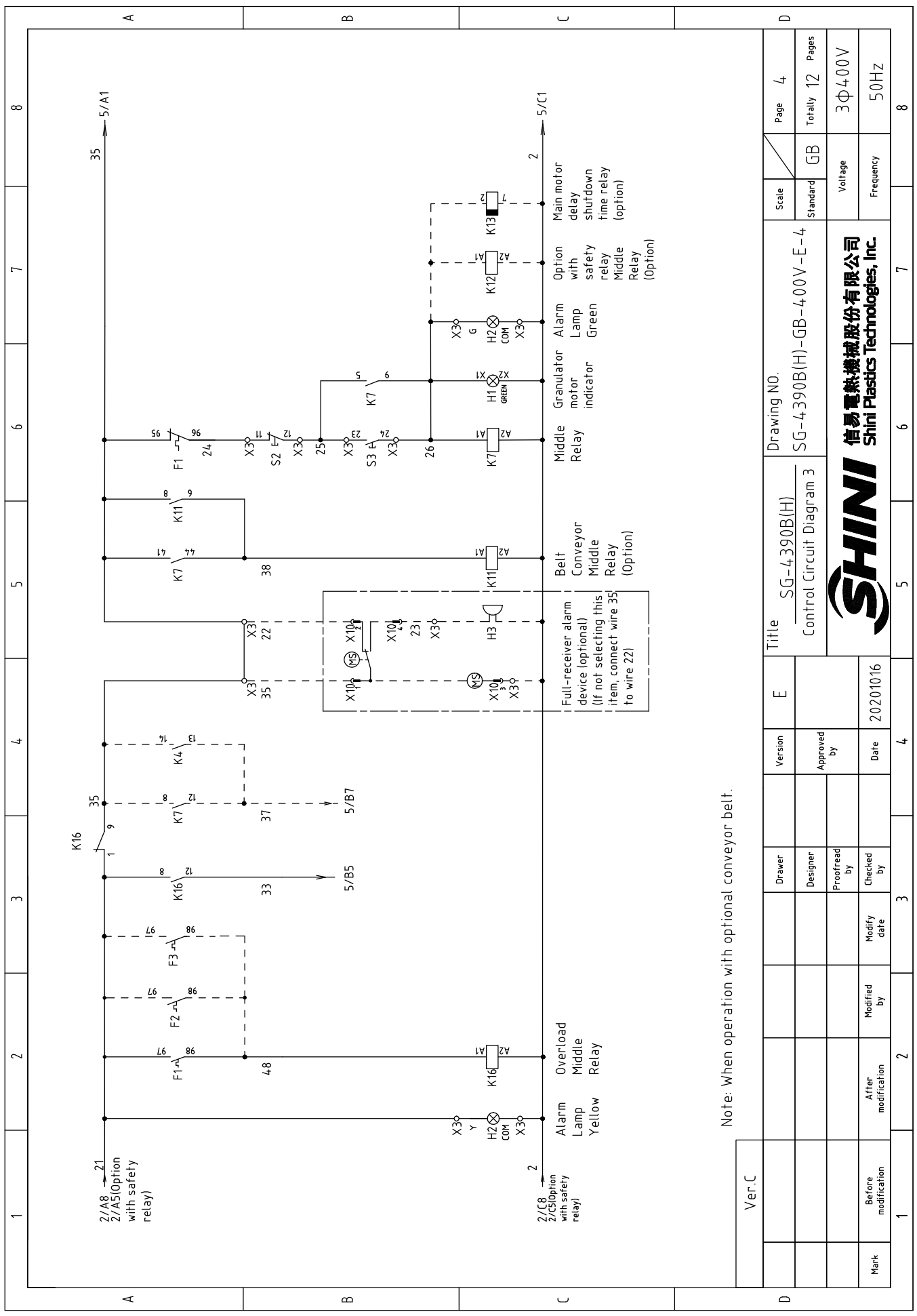
**SHINI**  
信易電熱機械股份有限公司  
Shini Plastics Technologies, Inc.



Note: When operation without optional conveyor belt.

Ver.C	E		Title		Drawing No.		Scale		Page	
	Version	Approved by	SG-4390B(H) Control Circuit Diagram 2		SG-4390B(H)-GB-400V-E-3		Standard		Totally 12 Pages	
Mark	Modified by	Modified date	Proofread by	Checked by	Date	Voltage		Frequency		
1	2	3			20201016	3Φ400V		50HZ		
			Designer	Checked by		3		8		
			Drawer	Approved by		6		7		
						5		4		
						4		3		
						3		2		
						2		1		





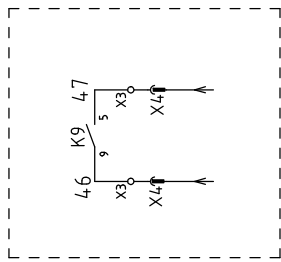
Note: When operation with optional conveyor belt.

Ver.C		E		Version		Title		Scale		Page	
						SG-4390B(H) Control Circuit Diagram 3		Standard		4	
				Approved by		SG-4390B(H)-GB-400V-E-4		GB		Totally 12	
				Date		20201016		Voltage		3Φ400V	
Mark		Before modification		Modified by		Modified date		Frequency		50HZ	
1		2		3		4		5		6	
7		8		9		10		11		12	

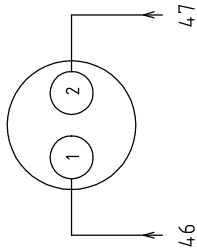




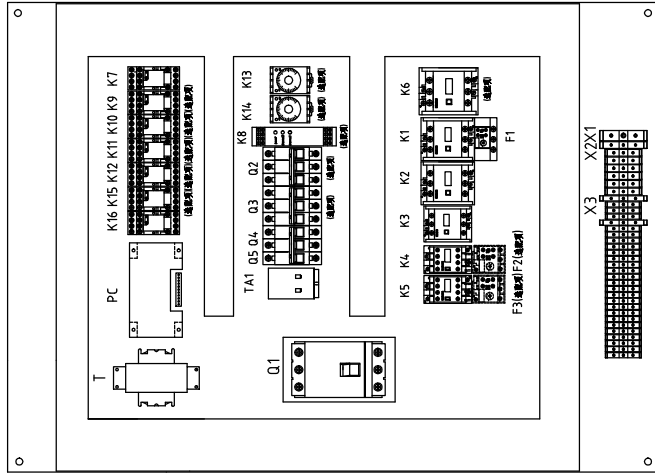
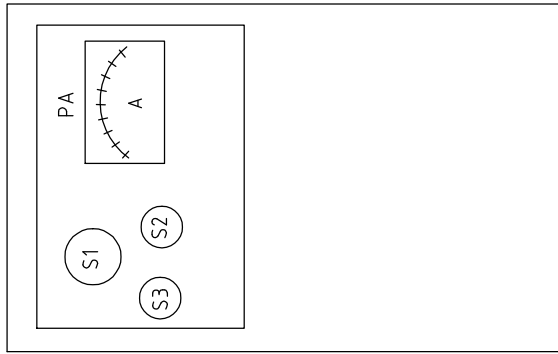
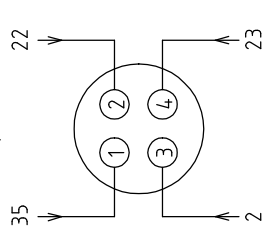
Control contact wiring diagram in collocation with belt conveyor



X4 Connection diagram of metal connectors  
Connect to belt conveyor (option)



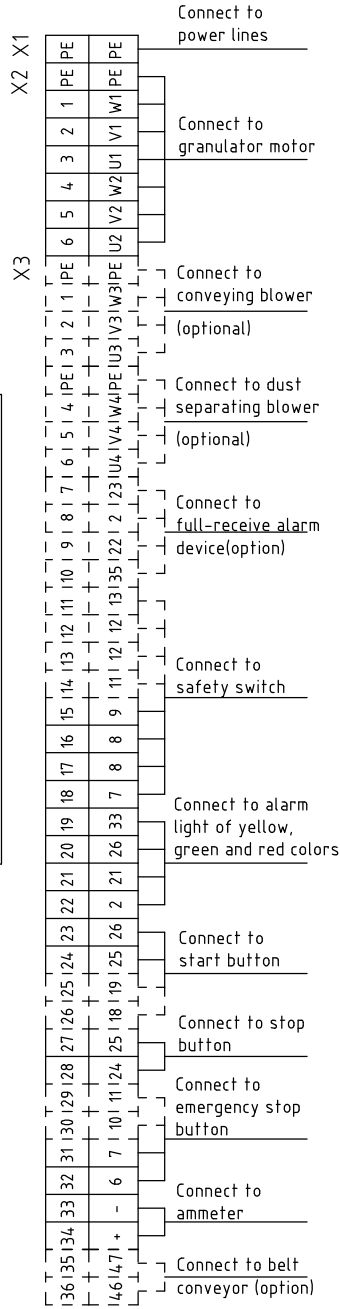
X10 Connection diagram of metal connectors  
Connect to full-receive alarm device (option)



X11: 16P Heavy-duty plug-in

①	7	⑨
②	9	⑩
③	11	⑪
④	13	⑫
⑤		⑬
⑥		⑭
⑦		⑮
⑧		⑯

Note: When the safety relay is not opted, change the terminal 9 to 21, and don't connect the terminal 11 and 13.



Notes: Change terminal No. 6 to 3, and No. 9 to 21 without optional safety relay.

Ver.C	Title SG-4390B(H) Electrical Components Layout			Drawing No. SG-4390B(H)-GB-400V-E-6		Scale GB	Page 6
	Drawer	Designer	Proofread by	Checked by	Version E	Standard	Totally 12 Pages
Mark	Modified by	After modification	Before modification	Modify date	Date 20201016	Voltage 3Φ400V	Frequency 50HZ
	3	4	4	4	4	6	8




1		2		3		4		5		6		7		8	
NO.	Symbol	Name	Manufacturer	Type	Specification	Number	Material number	Remark							
1	Q1	Break Interlock	ABB	A1A125TMF125	125A	1	YE41161400000								
2	Q2	Circuit-breaker	TECO	BM-63C/3P	10A	1	YE40301003000	(6)							
3	Q2	Circuit-breaker	TECO	BM-63C/3P	32A	1	YE40303203000	(7)							
4	Q3	Circuit-breaker	TECO	BM-63C/3P	6A	1	YE40300603000	(2)							
5	Q4	Circuit-breaker	TECO	BM-63C/2003S 2P	3A	1	YE40200203000								
6	Q5	Circuit-breaker	TECO	BM-63C/1010S 1P	10A	1	YE40101000100								
7	K1,K2	Contactor	SIEMENS	3RT5036-1AC20	50A 24VAC 50/60Hz	2	YE00503602600								
8		Auxiliary contactor	SIEMENS	3RH5921-1CA10	1NO	1	YE00592110000	New							
9	K3	Contactor	SIEMENS	3RT5035-1AC20	40A 24VAC 50/60Hz	1	YE00503502600	(8)							
10	K3	Contactor	SIEMENS	3RT5036-1AC20	50A 24VAC 50/60Hz	1	YE00503602600								
11		Auxiliary Contactor	SIEMENS	3RH5921-1CA01	1NC	2	YE00592110100								
12		Auxiliary Contactor	SIEMENS	3RH5921-1CA10	1NO	1	YE00592110000	(5)							
13		Auxiliary Contactor	SIEMENS	3RH5921-1CA01	1NC	1	YE00592110100	(4)							
14	K4	Contactor	SIEMENS	3RT6016-1AB01	9A 24VAC 50/60Hz	1	YE00601602500	(6)							
15	K4	Contactor	SIEMENS	3RT6026-1AC20	25A 24VAC 50/60Hz	1	YE00602602600	(7)							
16		Auxiliary Contactor	SIEMENS	3RH6911-1HA11	1NC+1NO	1	YE00691100100	(6)							
17	K5	Contactor	SIEMENS	3RT6016-1AB02	9A 24VAC 50/60Hz	1	YE00601602600	(2)							
18	K6	Contactor	SIEMENS	3RT5046-1AC20	95A 24VAC 50/60Hz	1	YE00504602600	(4)							
19		Auxiliary Contactor	SIEMENS	3RH5921-1CA01	1NC	1	YE00592110100	(4)							
20		Auxiliary Contactor	SIEMENS	3RH5921-1CA10	1NO	1	YE00592110000	(4)New							
21	K7	Middle relay	Honeywell	GR-2C-AC24V	24VAC	1	YE03022400300								
22	K7	Middle relay	Honeywell	GR-4C-AC24V	24VAC	1	YE03042400300	(5)							
23	K8	Safety realy	PILZ	PNOZx2.8P	24V AC/DC	1	YE04023000000	(4)							
24	K9 K10 K11 K15	Middle relay	Honeywell	GR-2C-AC24V	24VAC	4	YE03022400300	(5)							
25	K12	Middle relay	Honeywell	GR-2C-AC24V	24VAC	1	YE03022400300	(4)							
Ver.C															
Notes: (1)Means it's not the material inside the control box. (2)Means optional accessories of dedusting motor;(3)Optional accessories of full-receive alarm device;(4)Stand for optional safety relay;(5)Belt conveyor accessories; (6) Means accessories for material conveying blower (7)Large blower power options.															
D		Ver.C		E		Version		Title		Drawing No.		Scale		Page 7	
		Designer		Approved by				SG-4-390B		SG-4 390B(H)-GB-4.00V-E-7		Standard		Totally 12 Pages	
		Proofread by		Date				Electrical Components List 1				Voltage		3Φ4.00V	
		Checked by		Date								Frequency		50HZ	
Mark		After modification		Modified by		20201016									
1		2		3		4		5		6		7		8	



**信易電熱機械股份有限公司**  
Shini Plastics Technologies, Inc.

1		2		3		4		5		6		7		8	
NO.	Symbol	Name	Manufacturer	Type	Specification	Number	Material number	Remark							
26	K13	Timer	YUYUN	TRF-N/3M	24VAC	1	YE860324.000000	(5)							
27	K14	Timer	YUYUN	TH3A-NAB 60S	24VAC	1	YE866024.003000	(5)							
28	F2	Overload relay	SIEMENS	3RU6116-1FB0	3.5-5A	1	YE011603500000	(6) New							
29	F2	Overload relay	SIEMENS	3RU6126-4BB0	14-20A	1	YE0126014.0000	(7)							
30	F1	Overload relay	SIEMENS	3RU5136-4GB0	36-45A	1	YE016126600000								
31	F3	Overload relay	SIEMENS	3RU6116-1DB0	2.2-3.2A	1	YE011602200000	(2) New							
32	K16	Middle relay	Honeywell	GR-2C-AC24V	24VAC	1	YE030224.003000								
33	S1	Emergency stop button	SCHNEIDER	XB2BS542C	4.00VAC	1	YE11254.200000	(1)							
34	S2	Contact block	SCHNEIDER	ZB2BE102C	1NC	1	YE00210203100	(1)(4)							
35	S2	Stop button	SCHNEIDER	XB2BA22C	4.00VAC	1	YE112220000000	(1)							
36	S3,H1	Start button (with light)	SCHNEIDER	XB2Bw33B1C	24VAC	1	YE112331000000	(1)							
37	S3	Contact block	SCHNEIDER	ZB2BE101C	1NO	1	YE00210103100	(1)(4)							
38	S4,S5	Safety switch	SCHMERSRC	AZ16-02ZVRK-14.76	230VAC	2	YE1614.76000000	(1)(4)							
39	S4,S5	Safety switch	SCHMERSRC	AZ15-02ZVRK-14.76	230VAC	2	YE1614.7600100	(1)							
40		Operation parts AZ17-B6	-----	-----	AZ-17	2	YE161760000000	(1)							
41	H2	Three-color alarm lamp	SHINI	Red, green, yellow lights + buzzer	24VAC/DC 50/60HZ	1	BL900024.01520	(1)							
42	H3	Buzzer	TEND	EA-2	24VAC	1	YE84.24.02000000	(1)(3)							
43	MS	Material level motor	SHINI	SR-80	24VAC	1	YE158024.00100	(1)(3)							
44	T	Sensor transformer	BAIYUN	IN=400V/4.15V OUT=24V	350VA	1	YE7004.0009900	Delete							
45	T	Sensor transformer	-----	IN=400V/4.15V OUT=24V	180VA	1	YE7004.0006700	New							
46	T	Sensor transformer	-----	IN=400V/4.15V OUT=24V	350VA	1	YE7004.0009900	(4) New							
47	TA1	Current transformer	RATIO	RQT-35	100/5A	1	YE04.1005000000	(1)							
48	PA	Ammeter	SFIM	DH-670	100/5A	1	YE256710000000	(1)							
49	PCB	PCB	YUYUN	AB-02	24VAC	1	YE800224.00100								
50		For plastic housing SI-4T circuit board	-----	-----	----	1	YR4.00004.00100								
Ver.C Notes: (1)Means it's not the material inside the control box. (2)Means optional accessories of decusting motor;(3)Optional accessories of full-receive alarm device;(4)Srand for optional safety relay;(5)Betl conveyor accessories; (6) Means accessories for material conveying blower. (7)Large blower power options.															
				Version	E	Drawing NO.		Scale	Page 8						
				Drawer		Title		Standard	Totally 12 Pages						
				Designer		SG-4.390B			GB						
				Approved by		Electrical Components List 2		SG-4.390B(H)-GB-4.00V-E-8							
				Proofread by		SHINI		Voltage 3Φ4.00V							
				Checked by		信易电热机械股份有限公司		Frequency 50HZ							
				Modify date	20201016	Shini Plastics Technologies, Inc.									
Mark	Before modification	After modification	Modified by	Date											
1	2	3	4	5	6	7	8								



1		2		3		4		5		6		7		8	
NO.	Symbol	Name	Manufacturer	Type	Specification	Number	Material number	Remark							
1	Q1	Break Interlock	ABB	A1A125TMF125	125A	1	YE41161400000								
2	Q2	Circuit-breaker	TECO	BM-63C/3P	10A	1	YE40301003000	(6)							
3	Q2	Circuit-breaker	TECO	BM-63C/3P	32A	1	YE40303203000	(7)							
4	Q3	Circuit-breaker	TECO	BM-63C/3P	6A	1	YE40300603000	(2)							
5	Q4	Circuit-breaker	TECO	BM-63C/2003S 2P	3A	1	YE40200203000								
6	Q5	Circuit-breaker	TECO	BM-63C/1010S 1P	10A	1	YE40101000100								
7	K1,K2	Contact	SIEMENS	3RT5044-1AC20	65A 24VAC 50/60Hz	2	YE00504402600								
8		Auxiliary contact	SIEMENS	3RH5921-1CA10	1NO	1	YE00592110000	New							
9	K3	Contact	SIEMENS	3RT5036-1AC20	50A 24VAC 50/60Hz	1	YE00503602600								
10		Contact	SIEMENS	3RH5921-1CA01	1NC	2	YE00592110100								
11		Auxiliary Contact	SIEMENS	3RH5921-1CA10	1NO	1	YE00592110000	(5)							
12		Auxiliary Contact	SIEMENS	3RH5921-1CA01	1NC	1	YE00592110100	(4)							
13	K4	Contact	SIEMENS	3RT6016-1AB01	9A 24VAC 50/60Hz	1	YE00601602500	(6)							
14	K4	Contact	SIEMENS	3RT6026-1AC20	25A 24VAC 50/60Hz	1	YE00602602600	(7)							
15		Auxiliary Contact	SIEMENS	3RH6911-1HA11	1NC+1NO	1	YE00691100100	(6)							
16	K5	Contact	SIEMENS	3RT6016-1AB02	9A 24VAC 50/60Hz	1	YE00601602600	(2)							
17	K6	Contact	SIEMENS	3RT5054-1AB36	115A 24V 50/60Hz	1	YE00505400900	(4)							
18		Auxiliary Contact	SIEMENS	3RH5921-1CA10	1NO	1	YE00592110000	(4)New							
19	K7	Middle relay	Honeywell	GR-2C-AC24V	24VAC	1	YE03022400300								
20	K7	Middle relay	Honeywell	GR-4C-AC24V	24VAC	1	YE03042400300	(5)							
21	K8	Safety relay	PILZ	PNOZx2.8P	24V AC/DC	1	YE04023000000	(4)							
22	K9 K10 K11 K15	Middle relay	Honeywell	GR-2C-AC24V	24VAC	4	YE03022400300	(5)							
23	K12	Middle relay	Honeywell	GR-2C-AC24V	24VAC	1	YE03022400300	(4)							
24	K13	Timer	YUYUN	TRF-N/3M	24VAC	1	YE86032400000	(5)							
25	K14	Timer	YUYUN	TH3A-NAB 60S	24VAC	1	YE86602400300	(5)							
Notes: (1)Means it's not the material inside the control box. (2)Means optional accessories of dedusting motor.(3)Optional accessories of full-receive alarm device.(4)Stand for optional safety relay.(5)Belt conveyor accessories. (6) Means accessories for material conveying blower.(7)Large blower power options.															
Ver.C				Title		Drawing No.		Scale		Page		10		8	
				SG-4390BH		SG-4390B(H)-GB-400V-E-10		Standard		GB		Totally		12	
				Electrical Components List 1								Voltage		3Φ400V	
				Date		20201016						Frequency		50HZ	
Mark		Before modification		Modified by		Modify date		Checked by		Proofread by		Designer		Drawer	
1		2		3		4		5		6		7		8	
 <b>SHINI</b> 信易電熱機械股份有限公司 Shini Plastics Technologies, Inc.															



