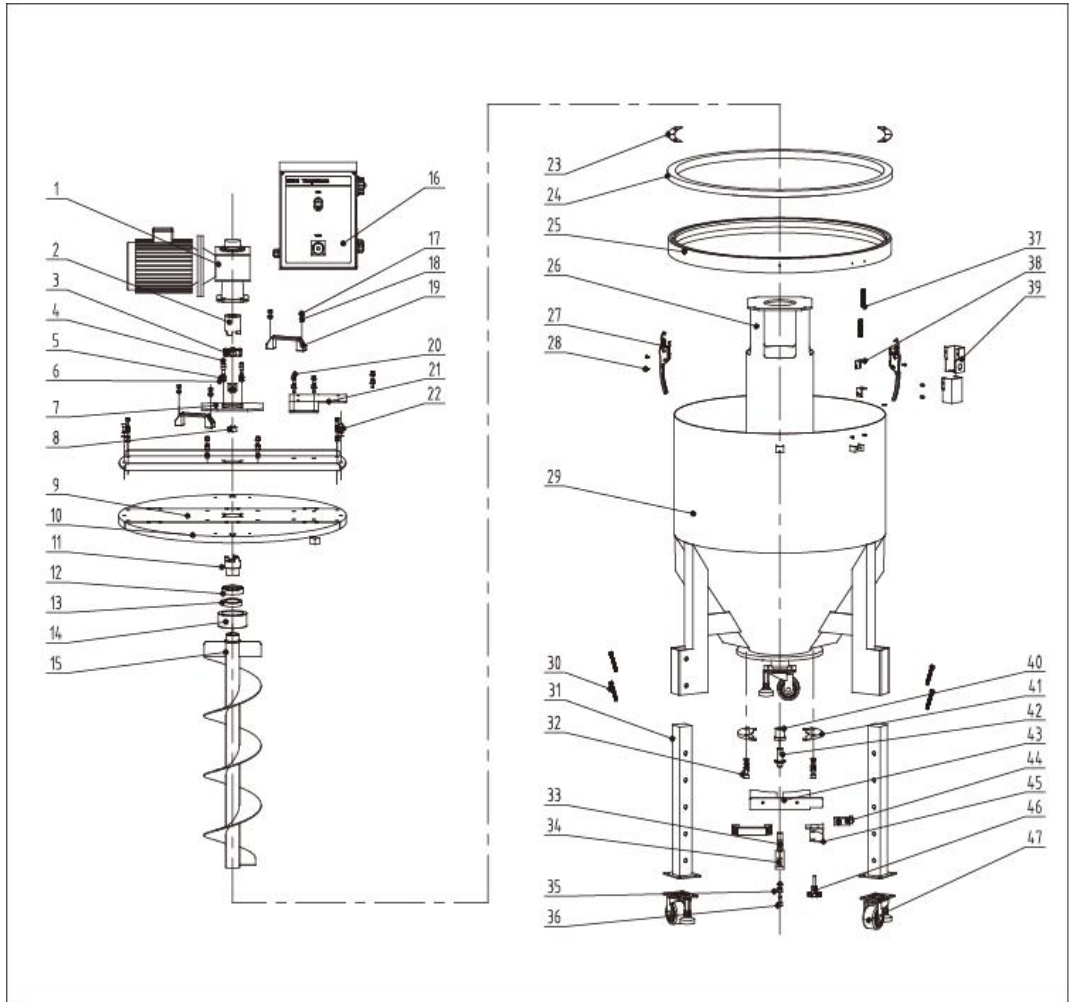


# 1. Assembly Drawing (SSM-80U)



Remarks: Please refer to material list 2 for specific explanation of the Arabic numbers in parts drawing.

## 2. Parts List (SSM-80U)

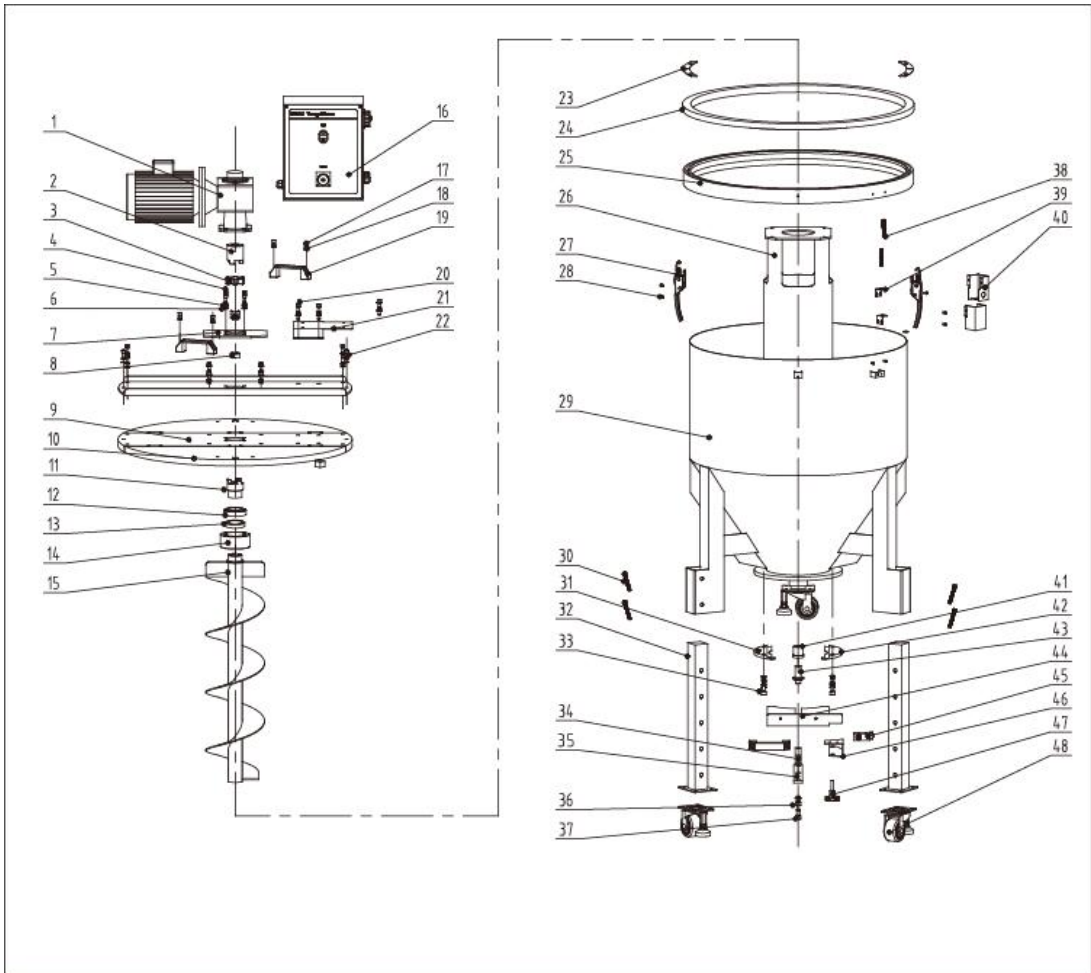
| No. | Name                                   | Part No.      | No. | Name                                      | Part No.      |
|-----|--|---------------|-----|---|---------------|
| 1   | Gear motor *                           | YM50507500300 | 25  | Aluminum base ring                        | BH13008001810 |
| 2   | Shaft connection upper *               | BH10160100110 | 26  | Sleeve                                    | -             |
| 3   | Shaft coupler elastic component ML-95* | YR10009516000 | 27  | Knob SHD-12                               | YW00121000000 |
| 4   | Inner hexagon cylindrical screw M8x50  | YW61085000000 | 28  | Cross recessed pan head screw M5          | YW63051000000 |
| 5   | "Standard" spring washer 8             | YW65008000100 | 29  | Barrel body assembly                      | -             |
| 6   | Flat washer A grade (9x16x1.6)         | YW66081900000 | 30  | Hexagon screw bolt M12x70                 | YW60127000000 |
| 7   | Motor fixed base                       | -             | 31  | Gate disc fixed plate                     | -             |
| 8   | Handle hook                            | YW00251000000 | 32  | Inner hexagon column screw M10x30         | YW61103000100 |
| 9   | Middle cover                           | -             | 33  | Main shaft locating bar 1                 | -             |
| 10  | Bilateral cover                        | -             | 34  | Main shaft locating bar                   | -             |
| 11  | Shaft coupler upper                    | BH11160012711 | 35  | Inner hexagon column screw M10x35         | YW61103500000 |
| 12  | Bearing*                               | YW11320900000 | 36  | Inner hexagon column screw M6x20          | YW61062000300 |
| 13  | Oil seal 45*65*12*                     | YR20456512000 | 37  | Reed switch                               | YE15123000100 |
| 14  | Bearing block                          | BL12160000040 | 38  | Magnetic proximity switch fixation base 4 | -             |
| 15  | Blending assembly                      | BH11008002340 | 39  | Magnetic proximity switch fixation base 1 | -             |
| 16  | Control box                            | BL44160005020 | 40  | shaft sleeve*                             | BH11801300310 |
| 17  | Inner hexagon cylindrical screw M8x20  | YW61082001200 | 41  | Gate disc fixed plate                     | BL10800000120 |
| 18  | Hexagon nut M8 (anti-loose)            | YW60082010000 | 42  | Hinge pin*                                | BH11801400310 |
| 19  | Aluminum square hand (M8 hole)         | BW20012000140 | 43  | Gate disc                                 | -             |
| 20  | Inner hexagon cylindrical screw M8x12  | YW61061200000 | 44  | limit switch                              | YE14450000000 |
| 21  | Control box fixed plate                | -             | 45  | Microswitch fixed base                    | -             |
| 22  | Inner hexagon cylindrical screw M8x40  | YW61084000000 | 46  | Star handle                               | YR40083500000 |
| 23  | Barrel cover padding edge              | -             | 47  | Castor 3"                                 | YW03000301000 |
| 24  | Barrel fastener                        | YR10005000300 | 48  |   |               |

\* means possible broken parts.

\*\* means easy broken part. and spare backup is suggested.

Please confirm the version of manual before placing the purchase order to guarantee that the item number of the spare part is in accordance with the real object.

### 3. Assembly Drawing (SSM-160U)



Remarks: Please refer to material list 4 for specific explanation of the Arabic numbers in parts drawing.

#### 4. Parts List (SSM-160U)

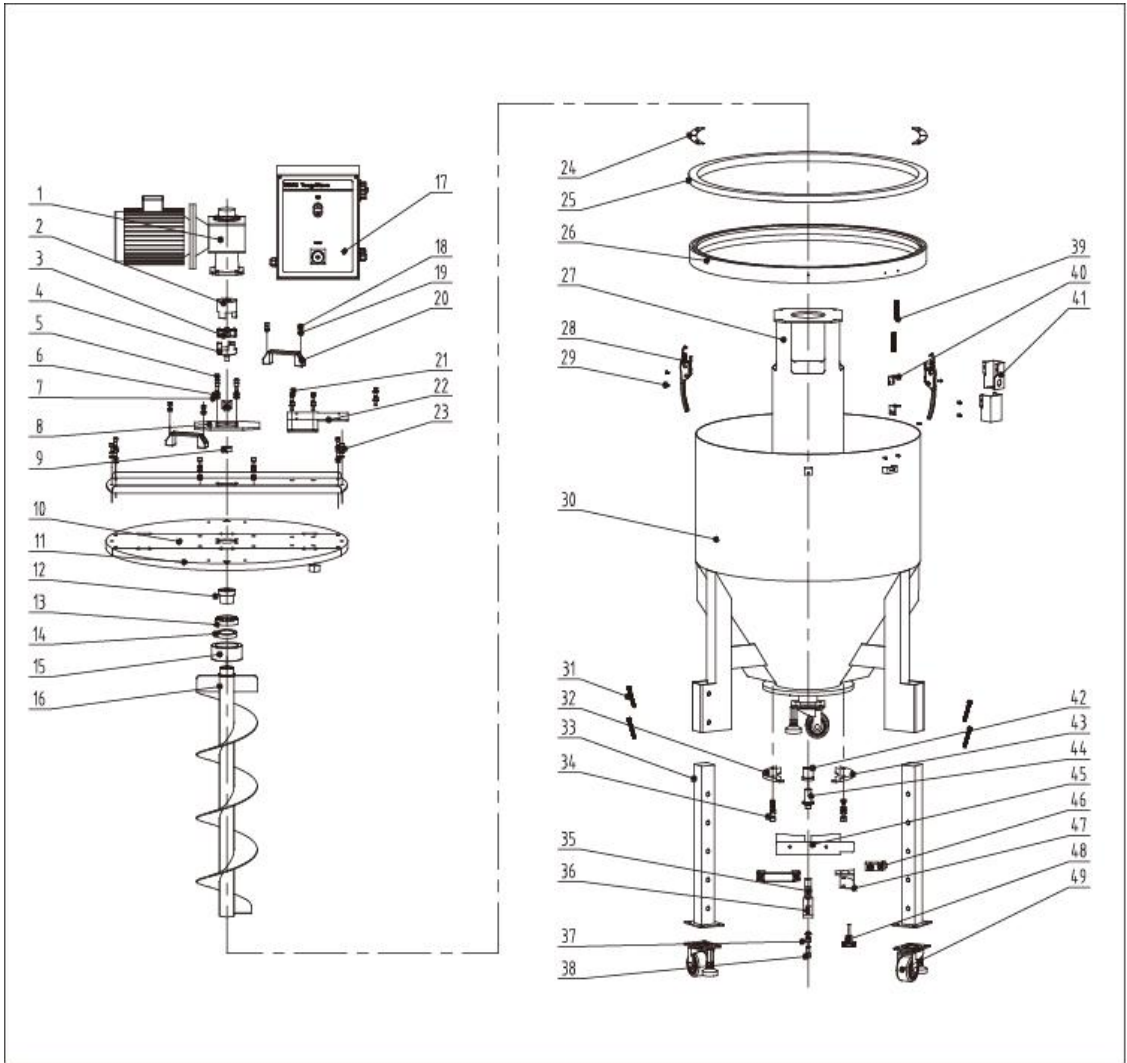
| No. | Name                                   | Material No.  | No. | Name                                   | Material No.  |
|-----|--|---------------|-----|--|---------------|
| 1   | Gear box *                             | YM50507500300 | 25  | Aluminum base ring                     | BH13016002210 |
| 2   | Shaft connection upper*                | BH10160100110 | 26  | Sleeve                                 | -             |
| 3   | Shaft coupler elastic component ML-95* | YR10009516000 | 27  | Handle SHD-12                          | YW00121000000 |
| 4   | Inner hexagon cylindrical screw M8x50  | YW61085000000 | 28  | Cross recessed pan head screw M5       | YW63051000000 |
| 5   | Standard spring washer 8               | YW65008000100 | 29  | Barrel body assembly                   | -             |
| 6   | Flat washer A grade (9x16x1.6)         | YW66081900000 | 30  | Hexagon screw bolt M12x85              | YW60128500000 |
| 7   | Motor fixed base                       | -             | 31  | Gate disc fixed plate 1                | BL50160600120 |
| 8   | Handle hook                            | YW00251000000 | 32  | Slipping machine feet                  | -             |
| 9   | Middle cover                           | -             | 33  | Inner hexagon cylindrical screw M10x30 | YW61103000100 |
| 10  | Bilateral cover                        | -             | 34  | Main shaft locating bar 1              | -             |
| 11  | Shaft coupler upper                    | BH11160012711 | 35  | Main shaft locating bar                | -             |
| 12  | Bearing *                              | YW11320900000 | 36  | Inner hexagon cylindrical screw M10x35 | YW61103500000 |
| 13  | Oil seal 45*65*12*                     | YR20456512000 | 37  | Inner hexagon cylindrical screw M6x20  | YW61062000300 |
| 14  | Bearing block                          | BL12160000040 | 38  | Reed switch                            | YE15123000100 |
| 15  | Blending assembly                      | BH11160000040 | 39  | Reed switch fixed seat 4               | -             |
| 16  | Control box                            | BL44160005020 | 40  | Reed switch fixed seat 1               | -             |
| 17  | Inner hexagon cylindrical screw M8x20  | YW61082001200 | 41  | Shaft sleeve **                        | BR90016002810 |
| 18  | Hexagon nut M8(anti-loose)             | YW60082010000 | 42  | Gate disc fixed plate 2                | BL34016041420 |
| 19  | Aluminum square hand (M8 hole)         | BW20012000140 | 43  | Hinge pin *                            | BL10160000120 |
| 20  | Inner hexagon cylindrical screw M8x12  | YW61061200000 | 44  | Gate disc                              | -             |
| 21  | Control box fixed plate                | -             | 45  | Limit switch                           | YE14450000000 |
| 22  | Inner hexagon cylindrical screw M8x40  | YW61084000000 | 46  | Micro-switch fixed base                | -             |
| 23  | Barrel cover padding edge              | -             | 47  | Star handle                            | YR40083500000 |
| 24  | Barrel fastener                        | YR10005000300 | 48  | Castor 3"                              | YW03000301000 |

\* means possible broken parts.

\*\* means easy broken part. and spare backup is suggested.

Please confirm the version of manual before placing the purchase order to guarantee that the item number of the spare part is in accordance with the real object.

## 5. Assembly Drawing (SSM-300U)



Remarks: Please refer to material list 6 for specific explanation of the Arabic numbers in parts drawing.

## 6. Parts List (SSM-300U)

| No. | Name                                    | Material No.  | No. | Name                                   | Material No.  |
|-----|---|---------------|-----|--|---------------|
| 1   | Gear box *                              | YM50507500900 | 26  | Aluminum base ring                     | BH13016002210 |
| 2   | Shaft connection upper*                 | BH10160100110 | 27  | Sleeve                                 | -             |
| 3   | Shaft coupler elastic component ML-100* | YR10010030000 | 28  | Handle SHD-12                          | YW00121000000 |
| 4   | Shaft connection lower                  | BL20030005620 | 29  | Cross recessed pan head screw M5       | YW63051000000 |
| 5   | Inner hexagon cylindrical screw M8x50   | YW61085000000 | 30  | Barrel body assembly                   | -             |
| 6   | Standard spring washer 8                | YW65008000100 | 31  | Hexagon screw bolt M12x85              | YW60128500000 |
| 7   | Flat washer A grade(9x16x1.6)           | YW66081900000 | 32  | Gate disc fixed plate 1                | BL50160600120 |
| 8   | Motor fixed base                        | -             | 33  | Slipping machine feet                  | -             |
| 9   | Handle hook                             | YW00251000000 | 34  | Inner hexagon cylindrical screw M10x30 | YW61103000100 |
| 10  | Middle cover                            | -             | 35  | Main shaft locating bar 1              | -             |
| 11  | Bilateral cover                         | -             | 36  | Main shaft locating bar                | -             |
| 12  | Shaft coupler upper                     | BH11300000711 | 37  | Inner hexagon cylindrical screw M10x35 | YW61103500000 |
| 13  | Bearing*                                | YW11320900000 | 38  | Inner hexagon cylindrical screw M6x20  | YW61062000300 |
| 14  | Oil seal 45*65*12*                      | YR20456512000 | 39  | Reed switch                            | YE15123000100 |
| 15  | Bearing block                           | BL12160000040 | 40  | Reed switch fixed seat 4               | -             |
| 16  | Blending assembly                       | BH11300000740 | 41  | Reed switch fixed seat 1               | -             |
| 17  | Control box                             | BL44160005020 | 42  | Shaft sleeve**                         | BL12300000221 |
| 18  | Inner hexagon cylindrical screw M8x20   | YW61082001200 | 43  | Gate disc fixed plate 2                | BL34016041420 |
| 19  | Hexagon nut M8 (anti-loose)             | YW60082010000 | 44  | Hinge pin *                            | BL10300000120 |
| 20  | Aluminum square hand (M8 hole)          | BW20012000140 | 45  | Gate disc                              | -             |
| 21  | Inner hexagon cylindrical screw M8x12   | YW61061200000 | 46  | Limit switch                           | YE14450000000 |
| 22  | Control box fixed plate                 | -             | 47  | Micro-switch fixed base                | -             |
| 23  | Inner hexagon cylindrical screw M8x40   | YW61084000000 | 48  | Star handle                            | YR40083500000 |
| 24  | Barrel cover padding edge               | -             | 49  | Castor 3"                              | YW03000301000 |
| 25  | Barrel fastener                         | YR10005000300 |     |  |               |

\* means possible broken parts.

\*\* means easy broken part. and spare backup is suggested.

Please confirm the version of manual before placing the purchase order to guarantee that the item number of the spare part is in accordance with the real object.